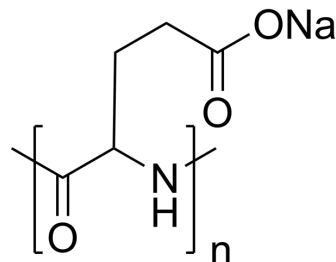


## Poly-L-glutamic acid sodium salt (MW 7500)

Cat. No.:	HY-W596474B
CAS No.:	26247-79-0
Target:	Biochemical Assay Reagents
Pathway:	Others
Storage:	Please store the product under the recommended conditions in the Certificate of Analysis.



### BIOLOGICAL ACTIVITY

#### Description

Poly-L-glutamic acid sodium salt (MW 7500) is a kind of biochemical reagent.

**Caution: Product has not been fully validated for medical applications. For research use only.**

Tel: 609-228-6898

Fax: 609-228-5909

E-mail: [tech@MedChemExpress.com](mailto:tech@MedChemExpress.com)

Address: 1 Deer Park Dr, Suite Q, Monmouth Junction, NJ 08852, USA