

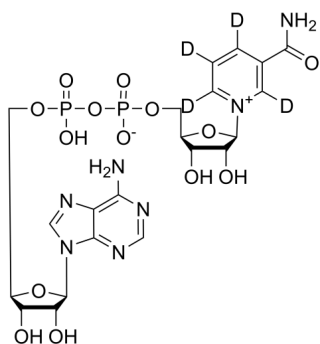
NAD⁺-d4

Cat. No.: HY-W654288
Batch No.: 357390
Molecular Formula: C₂₁H₂₃D₄N₇O₁₄P₂

ANALYTICAL DATA

Theoretical: C(37.79%)、H(4.68%)、N(14.69%)
Result: C(36.47%)、H(4.42%)、N(14.06%)

Chemical Structure:



Caution: Product has not been fully validated for medical applications. For research use only.

Tel: 609-228-6898

Fax: 609-228-5909

E-mail: tech@MedChemExpress.com

Address: 1 Deer Park Dr, Suite Q, Monmouth Junction, NJ 08852, USA