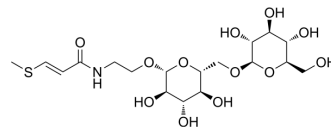


Entadamide A 2'-O-(6''-O-β-D-glucopyranosyl)-β-D-glucopyranoside

Cat. No.:	HY-W671745
CAS No.:	1427191-48-7
Molecular Formula:	C ₁₈ H ₃₁ NO ₁₂ S
Molecular Weight:	485.5
Target:	Others
Pathway:	Others
Storage:	Please store the product under the recommended conditions in the Certificate of Analysis.



BIOLOGICAL ACTIVITY

Description

Entadamide A 2'-O-(6''-O-β-D-glucopyranosyl)-β-D-glucopyranoside (MFLNH I) (compound 5) can be isolated from the seed kernel of *Entada rheedii*. *Entada rheedii* is a medicinal plant from Thailand that is used to suppress stomach pain^[1].

REFERENCES

[1]. Sugimoto S, et al. Medicinal plants of Thailand. II: chemical studies on the seed kernels of *Entada rheedii* Sprengel. *J Nat Med.* 2012 Jul;66(3):552-7..

Caution: Product has not been fully validated for medical applications. For research use only.

Tel: 609-228-6898

Fax: 609-228-5909

E-mail: tech@MedChemExpress.com

Address: 1 Deer Park Dr, Suite Q, Monmouth Junction, NJ 08852, USA