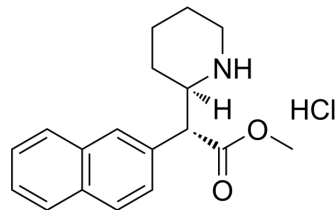


rel-HDMP 28 hydrochloride

Cat. No.:	HY-W710914A
CAS No.:	219915-69-2
Molecular Formula:	C ₁₈ H ₂₂ ClNO ₂
Molecular Weight:	319.83
Target:	Serotonin Transporter
Pathway:	Neuronal Signaling
Storage:	Please store the product under the recommended conditions in the Certificate of Analysis.



BIOLOGICAL ACTIVITY

Description

rel-HDMP 28 hydrochloride (Compound 2g) is a methylphenidate analogue that binds selectively to SERT ($K_i = 105 \text{ nM}$)^[1].

REFERENCES

[1]. Davies HM, et al. Synthesis of methylphenidate analogues and their binding affinities at dopamine and serotonin transport sites. *Bioorg Med Chem Lett.* 2004 Apr 5;14(7):1799-802.

Caution: Product has not been fully validated for medical applications. For research use only.

Tel: 609-228-6898

Fax: 609-228-5909

E-mail: tech@MedChemExpress.com

Address: 1 Deer Park Dr, Suite Q, Monmouth Junction, NJ 08852, USA