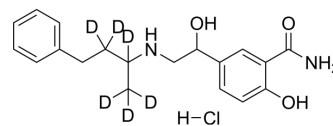


Labetalol-d₆ hydrochloride

Cat. No.:	HY-W728545
Molecular Formula:	C ₁₉ H ₁₉ D ₆ ClN ₂ O ₃
Molecular Weight:	370.9
Target:	Isotope-Labeled Compounds
Pathway:	Others
Storage:	Please store the product under the recommended conditions in the Certificate of Analysis.



BIOLOGICAL ACTIVITY

Description

Labetalol-d₆ hydrochloride (AH5158-d₆ hydrochloride; Sch-15719W-d₆) is a deuterium labeled Labetalol (HY-121383). Labetalol is an orally active α ₁- and β -adrenergic receptors competitive antagonist, which exhibits anti-hypertensive property^[1].

REFERENCES

[1]. Brogden RN, et al. Labetalol: a review of its pharmacology and therapeutic use in hypertension. *Drugs*. 1978;15(4):251-270.

Caution: Product has not been fully validated for medical applications. For research use only.

Tel: 609-228-6898

Fax: 609-228-5909

E-mail: tech@MedChemExpress.com

Address: 1 Deer Park Dr, Suite Q, Monmouth Junction, NJ 08852, USA