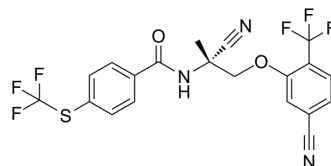


(R)-Monepantel

Cat. No.:	HY-W756217
CAS No.:	887148-70-1
Molecular Formula:	C ₂₀ H ₁₃ F ₆ N ₃ O ₂ S
Molecular Weight:	473.39
Target:	Others
Pathway:	Others
Storage:	Powder -20°C 3 years 4°C 2 years In solvent -80°C 6 months -20°C 1 month



BIOLOGICAL ACTIVITY

Description

(R)-Monepantel (AAD2224) is the optical R-enantiomer of monepantel. (R)-Monepantel has no nematocidal effect, is inactive [1].

REFERENCES

[1]. Roland Baur, et al. Monepantel irreversibly binds to and opens *Haemonchus contortus* MPTL-1 and *Caenorhabditis elegans* ACR-20 receptors. *Mol Pharmacol*, 2015, 81, 7.

Caution: Product has not been fully validated for medical applications. For research use only.

Tel: 609-228-6898

Fax: 609-228-5909

E-mail: tech@MedChemExpress.com

Address: 1 Deer Park Dr, Suite Q, Monmouth Junction, NJ 08852, USA