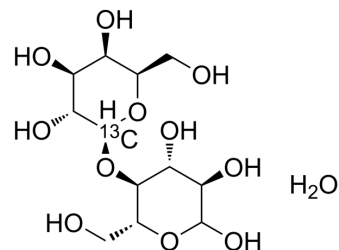


## [1-<sup>13</sup>Cgal]Lactose monohydrate

Cat. No.:	HY-W768291
Molecular Formula:	C <sub>11</sub> <sup>13</sup> CH <sub>24</sub> O <sub>12</sub>
Molecular Weight:	361.3
Target:	Isotope-Labeled Compounds
Pathway:	Others
Storage:	Please store the product under the recommended conditions in the Certificate of Analysis.



### BIOLOGICAL ACTIVITY

#### Description

[1-<sup>13</sup>Cgal]Lactose (monohydrate) is a labelled Lactose Monohydrate.

### REFERENCES

[1]. B Bose-Basu, et al. Deuterium nuclear spin-lattice relaxation times and quadrupolar coupling constants in isotopically labeled saccharides. J Magn Reson. 2000 Jun;144(2):207-16.

**Caution: Product has not been fully validated for medical applications. For research use only.**

Tel: 609-228-6898

Fax: 609-228-5909

E-mail: tech@MedChemExpress.com

Address: 1 Deer Park Dr, Suite Q, Monmouth Junction, NJ 08852, USA