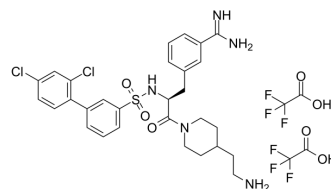


Matriptase-IN-2

Cat. No.:	HY-W783268A
CAS No.:	1268874-09-4
Molecular Formula:	C ₃₃ H ₃₅ Cl ₂ F ₆ N ₅ O ₇ S
Molecular Weight:	830.62
Target:	Others
Pathway:	Others
Storage:	Please store the product under the recommended conditions in the Certificate of Analysis.



BIOLOGICAL ACTIVITY

Description

Matriptase-IN-2 (compound 432) is a potent Matriptase inhibitor^[1].

REFERENCES

[1]. Klas Telborn. Apparatus and method for regenerating a particulate filter in a motor vehicle. Patent, WO2011002395A1.

Caution: Product has not been fully validated for medical applications. For research use only.

Tel: 609-228-6898

Fax: 609-228-5909

E-mail: tech@MedChemExpress.com

Address: 1 Deer Park Dr, Suite Q, Monmouth Junction, NJ 08852, USA