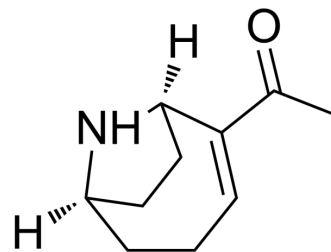


## Anatoxin-a

Cat. No.:	HY-W795027
CAS No.:	64285-06-9
Molecular Formula:	C <sub>10</sub> H <sub>15</sub> NO
Molecular Weight:	165.23
Target:	Cholinesterase (ChE); nAChR
Pathway:	Neuronal Signaling; Membrane Transporter/Ion Channel
Storage:	Please store the product under the recommended conditions in the Certificate of Analysis.



### BIOLOGICAL ACTIVITY

Description	Anatoxin-a (ATX-a) is a neurotoxic alkaloid. Anatoxin-a acts as both a nicotinic acetylcholine receptor (nAChR) agonist and an Acetylcholinesterase (AChE) inhibitor <sup>[1][2]</sup> .
IC <sub>50</sub> & Target	AChE

### REFERENCES

[1]. Mir SA, et al. An exploration of the binding prediction of anatoxin-a and atropine to acetylcholinesterase enzyme using multi-level computer simulations. Phys Biol. 2023 Nov 23;21(1).

[2]. Colas S, et al. Anatoxin-a: Overview on a harmful cyanobacterial neurotoxin from the environmental scale to the molecular target. Environ Res. 2021 Feb;193:110590.

**Caution: Product has not been fully validated for medical applications. For research use only.**

Tel: 609-228-6898

Fax: 609-228-5909

E-mail: tech@MedChemExpress.com

Address: 1 Deer Park Dr, Suite Q, Monmouth Junction, NJ 08852, USA