

File ..213 2019-12-13 17-00-55\CPK2019-D11-22099.D Tgt Mass (CHM):

Injection Date : 13 Dec 19 6:51 pm +0800 Seq. Line : 19

Sample Name : CPK2019-D11-22099 Location : P1-A-05

Acq. Operator : SYSTEM Inj : 1

Spec. Reported : MS Integration Inj Volume : 0.5 ul

Acq. Method : D:\LCMS03\Data\20191213\20191213 2019-12-13 17-00-55\1-POS-3MIN.M

Analysis Method : D:\CHEM32\1\DATA\2019\20191213\20191213 2019-12-13 17-00-55\1-POS-3MIN.M

Catalog No : HY-X0150 Batch# 22099

Method Info : Mobile Phase: A: water(0.01%TFA) B:ACN(0.01%TFA)

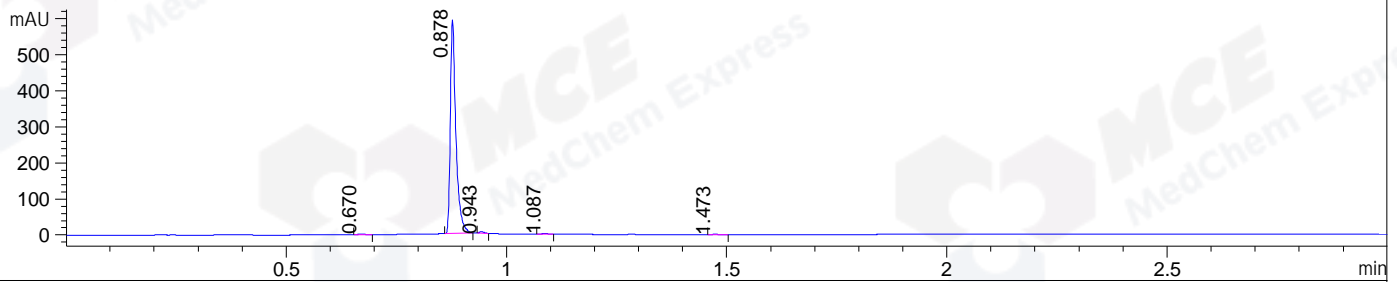
Gradient: 5% to 95%B within 1.3 min

Flow Rate :1.8ml/min

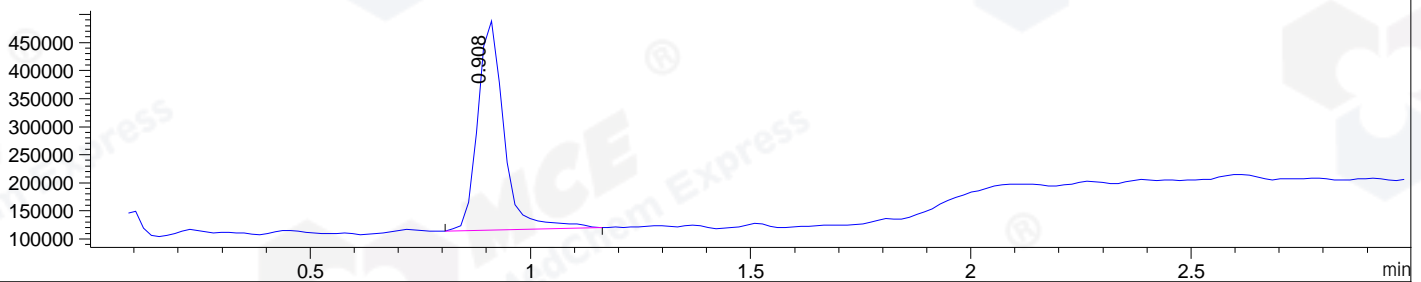
Column :SunFire C18, 4.6*50mm,3.5um A-RP-446

Oven Temperature : 45C

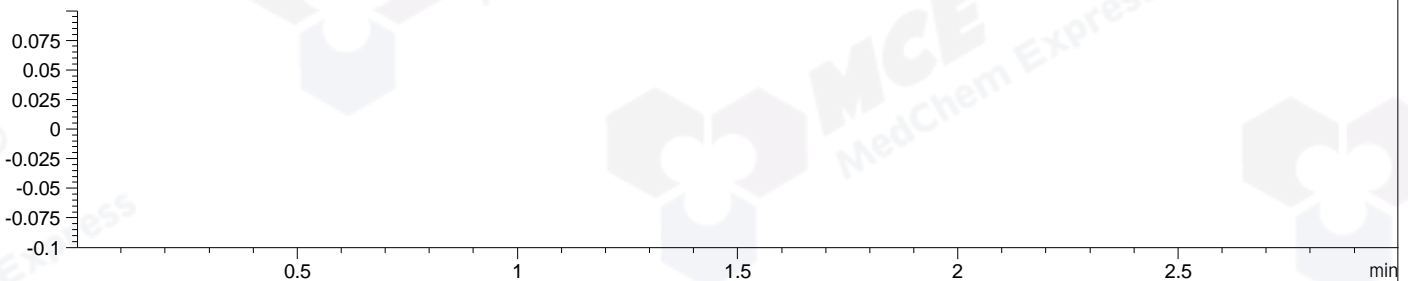
DAD1 B, Sig=254,4 Ref=off



MSD1 TIC, MS File ES-API, Pos, Scan, Frag: 70



Ion 1, MSD1 1, Target Mass 0 +H Positive, EIC=0.7:1.7



Integration Results for DAD1 B, Sig=254,4 Ref=off

RetTim	Width	Area	Height	Area%	MS (+)
0.67	0.02	2.01	2.18	0.38	114
0.88	0.01	521.66	594.28	98.36	505
0.94	0.01	3.33	4.68	0.63	505
1.09	0.02	2.49	2.42	0.47	114
1.47	0.02	0.89	0.81	0.17	114

Integration Results for MSD1 TIC, MS File

RetTim	Width	Area	Height	Area%	MS (+)
0.91	0.06	1557896.63	375680.44	100.00	114

Ret. Time: 0.91

<<<< POSITIVE SPECTRA >>>>

