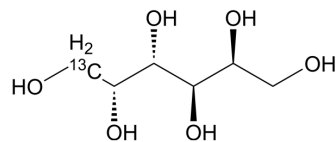


## Dulcitol-<sup>13</sup>C-3

<b>Cat. No.:</b>	HY-Y0418S3
<b>Molecular Formula:</b>	C <sub>5</sub> <sup>13</sup> CH <sub>14</sub> O <sub>6</sub>
<b>Molecular Weight:</b>	183.16
<b>Target:</b>	Endogenous Metabolite; Isotope-Labeled Compounds
<b>Pathway:</b>	Metabolic Enzyme/Protease; Others
<b>Storage:</b>	Please store the product under the recommended conditions in the Certificate of Analysis.



### BIOLOGICAL ACTIVITY

<b>Description</b>	Dulcitol- <sup>13</sup> C-3 is the <sup>13</sup> C labeled Dulcitol. Dulcitol is a sugar alcohol with a slightly sweet taste which is a metabolic breakdown product of galactose[1][2].
<b>In Vitro</b>	Stable heavy isotopes of hydrogen, carbon, and other elements have been incorporated into drug molecules, largely as tracers for quantitation during the drug development process. Deuterium has gained attention because of its potential to affect the pharmacokinetic and metabolic profiles of drugs <sup>[1]</sup> . MCE has not independently confirmed the accuracy of these methods. They are for reference only.

### REFERENCES

- [1]. Russak EM, et al. Impact of Deuterium Substitution on the Pharmacokinetics of Pharmaceuticals. *Ann Pharmacother*. 2019 Feb;53(2):211-216.
- [2]. Alloussi S, et al. Effect of 5% galactose diet on galactose and dulcitol in plasma and lens of male and female pigs. *Ann Nutr Metab*. 1989;33(6):323-9.

**Caution: Product has not been fully validated for medical applications. For research use only.**

Tel: 609-228-6898

Fax: 609-228-5909

E-mail: tech@MedChemExpress.com

Address: 1 Deer Park Dr, Suite Q, Monmouth Junction, NJ 08852, USA