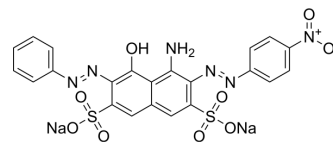


## Amido Black 10B

Cat. No.:	HY-Y0695
CAS No.:	1064-48-8
Molecular Formula:	C <sub>22</sub> H <sub>14</sub> N <sub>6</sub> Na <sub>2</sub> O <sub>9</sub> S <sub>2</sub>
Molecular Weight:	616.49
Target:	Fluorescent Dye
Pathway:	Others
Storage:	4°C, sealed storage, away from moisture and light * In solvent : -80°C, 6 months; -20°C, 1 month (sealed storage, away from moisture and light)



### BIOLOGICAL ACTIVITY

#### Description

Amido Black 10B (Naphthol Blue Black) is a highly toxic azo dye for amino acid staining. Amido Black 10B can create several problems in the human respiratory system and may also cause skin and eye irritations<sup>[1]</sup>.

### REFERENCES

[1]. Angelova R, et al. Magnetically modified sheaths of *Leptothrix* sp. as an adsorbent for Amido black 10B removal. *Journal of Magnetism and Magnetic Materials*, 2017, 427: 314-319.

**Caution: Product has not been fully validated for medical applications. For research use only.**

Tel: 609-228-6898

Fax: 609-228-5909

E-mail: tech@MedChemExpress.com

Address: 1 Deer Park Dr, Suite Q, Monmouth Junction, NJ 08852, USA