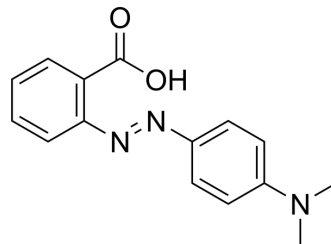


Methyl red

Cat. No.:	HY-Y0699
CAS No.:	493-52-7
Molecular Formula:	C ₁₅ H ₁₅ N ₃ O ₂
Molecular Weight:	269.3
Target:	Fluorescent Dye
Pathway:	Others
Storage:	4°C, protect from light * In solvent : -80°C, 6 months; -20°C, 1 month (protect from light)



BIOLOGICAL ACTIVITY

Description

Methyl red is an azo dye that acts as a pH indicator. Methyl red is red and yellow at pH 4.4 and 6.0 respectively^[1].

REFERENCES

[1]. Ikram M, et al. Biodegradation of Azo Dye Methyl Red by *Pseudomonas aeruginosa*: Optimization of Process Conditions. *Int J Environ Res Public Health*. 2022 Aug 12;19(16):9962.

Caution: Product has not been fully validated for medical applications. For research use only.

Tel: 609-228-6898

Fax: 609-228-5909

E-mail: tech@MedChemExpress.com

Address: 1 Deer Park Dr, Suite Q, Monmouth Junction, NJ 08852, USA