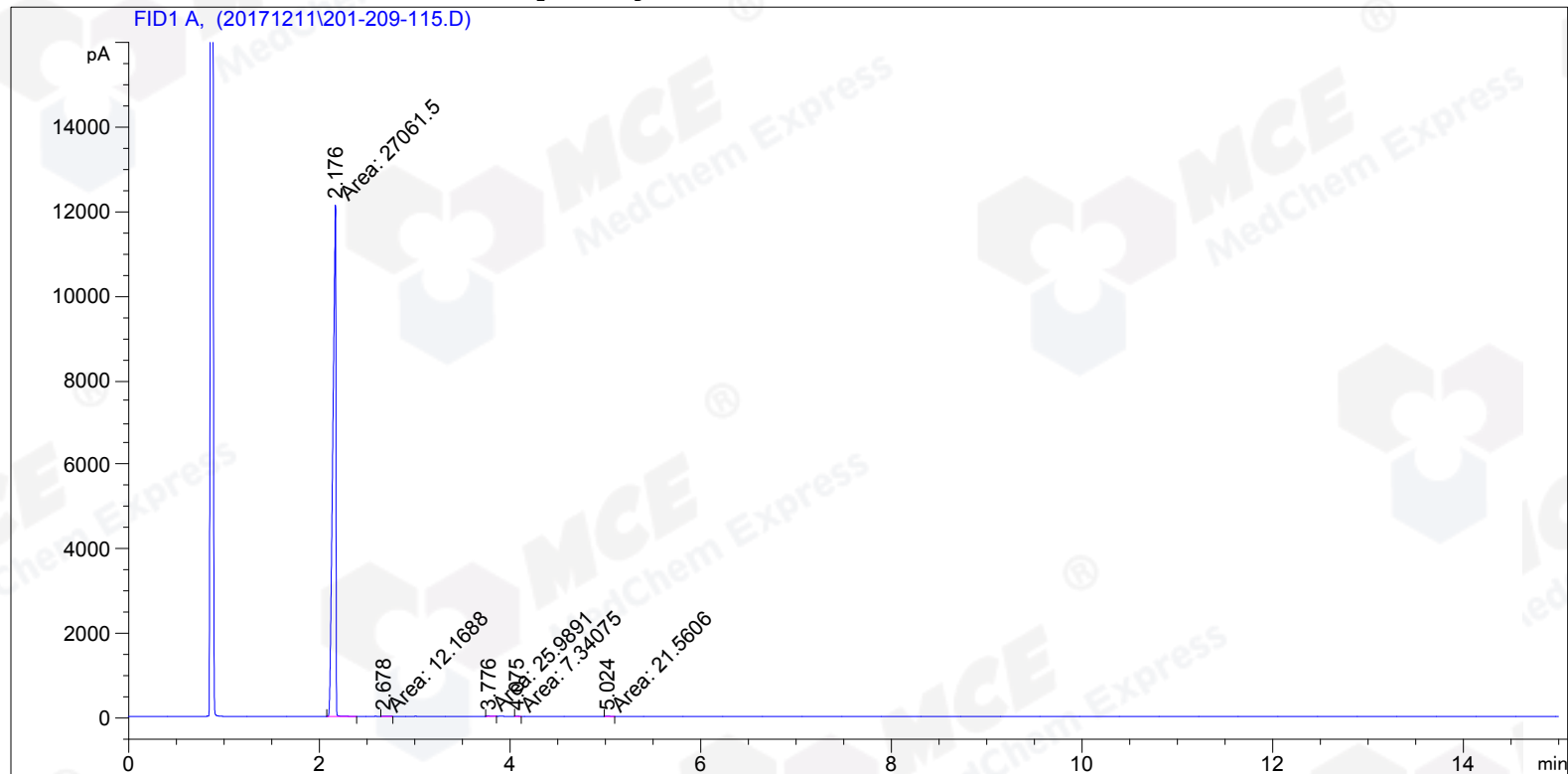


=====
Acq. Operator :
Acq. Instrument : Instrument 1 Location : -
Injection Date : 12/11/2017 12:05:10 PM Inj : 1
Inj Volume : Manually
Acq. Method : C:\CHEM32\1\METHODS\NORMAL.M
Last changed : 12/11/2017 11:43:24 AM
(modified after loading)
Analysis Method : C:\CHEM32\1\METHODS\NORMAL.M
Last changed : 12/11/2017 12:37:19 PM
(modified after loading)
Additional Info : Peak(s) manually integrated



=====
Area Percent Report
=====

Sorted By : Signal
Multiplier: : 1.0000
Dilution: : 1.0000
Use Multiplier & Dilution Factor with ISTDs

Signal 1: FID1 A,

Peak #	RetTime [min]	Type	Width [min]	Area [pA*s]	Height [pA]	Area %
1	2.176	MM	0.0372	2.70615e4	1.21129e4	99.75281
2	2.678	MM	0.0603	12.16883	3.36260	0.04486
3	3.776	MM	0.0379	25.98906	11.41405	0.09580
4	4.075	MM	0.0276	7.34075	4.43380	0.02706
5	5.024	MM	0.0386	21.56055	9.30790	0.07948

Totals : 2.71285e4 1.21414e4

*** End of Report ***