

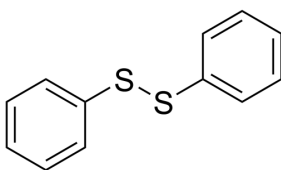
Diphenyl disulfide

Cat. No.: HY-Y1177
CAS No.: 882-33-7
Batch No.: 179701
Chemical Name: Disulfide, diphenyl

PHYSICAL AND CHEMICAL PROPERTIES

Molecular Formula: C₁₂H₁₀S₂
Molecular Weight: 218.34
Storage: Powder -20°C 3 years
 4°C 2 years
 In solvent -80°C 2 years
 -20°C 1 year

Chemical Structure:



ANALYTICAL DATA

Appearance: White to off-white (Solid)
¹H NMR Spectrum: Consistent with structure
Purity (HPLC): 99.91%
Water(KF): 0.22%
Residue on Ignition: 0.12%
Conclusion: The product has been tested and complies with the given specifications.

Caution: Product has not been fully validated for medical applications. For research use only.

Tel: 609-228-6898

Fax: 609-228-5909

E-mail: tech@MedChemExpress.com

Address: 1 Deer Park Dr, Suite Q, Monmouth Junction, NJ 08852, USA