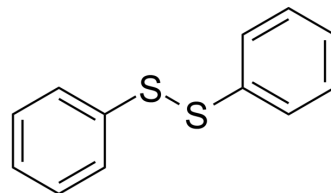


Diphenyl disulfide

Cat. No.:	HY-Y1177		
CAS No.:	882-33-7		
Molecular Formula:	C ₁₂ H ₁₀ S ₂		
Molecular Weight:	218.34		
Target:	Endogenous Metabolite		
Pathway:	Metabolic Enzyme/Protease		
Storage:	Powder	-20°C	3 years
		4°C	2 years
	In solvent	-80°C	6 months
		-20°C	1 month



SOLVENT & SOLUBILITY

In Vitro	DMSO : 100 mg/mL (458.00 mM; Need ultrasonic)				
		Solvent Concentration	Mass 1 mg	5 mg	10 mg
	Preparing Stock Solutions	1 mM	4.5800 mL	22.9001 mL	45.8001 mL
		5 mM	0.9160 mL	4.5800 mL	9.1600 mL
10 mM		0.4580 mL	2.2900 mL	4.5800 mL	
Please refer to the solubility information to select the appropriate solvent.					
In Vivo	1. Add each solvent one by one: 10% DMSO >> 40% PEG300 >> 5% Tween-80 >> 45% saline Solubility: ≥ 2.5 mg/mL (11.45 mM); Clear solution				
	2. Add each solvent one by one: 10% DMSO >> 90% (20% SBE-β-CD in saline) Solubility: ≥ 2.5 mg/mL (11.45 mM); Clear solution				
	3. Add each solvent one by one: 10% DMSO >> 90% corn oil Solubility: ≥ 2.5 mg/mL (11.45 mM); Clear solution				

BIOLOGICAL ACTIVITY

Description	Diphenyl disulfide is an endogenous metabolite.
IC ₅₀ & Target	Human Endogenous Metabolite

Caution: Product has not been fully validated for medical applications. For research use only.

Tel: 609-228-6898

Fax: 609-228-5909

E-mail: tech@MedChemExpress.com

Address: 1 Deer Park Dr, Suite Q, Monmouth Junction, NJ 08852, USA