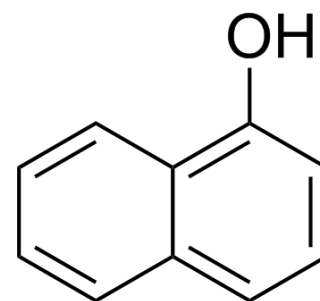


1-Naphthol

Cat. No.:	HY-Y1309
CAS No.:	90-15-3
Molecular Formula:	C ₁₀ H ₈ O
Molecular Weight:	144.17
Target:	Endogenous Metabolite
Pathway:	Metabolic Enzyme/Protease
Storage:	Please store the product under the recommended conditions in the COA.



BIOLOGICAL ACTIVITY

Description	1-naphthol is an excited state proton transfer (ESPT) fluorescent molecular probe.
IC ₅₀ & Target	Human Endogenous Metabolite

REFERENCES

[1]. Swain J, et al. 1-Naphthol as an ESPT fluorescent molecular probe for sensing thermotropic microenvironmental changes of pluronic F127 in aqueous media. *Phys Chem Chem Phys*. 2015 Jul 14;17(26):16752-9.

Caution: Product has not been fully validated for medical applications. For research use only.

Tel: 609-228-6898

Fax: 609-228-5909

E-mail: tech@MedChemExpress.com

Address: 1 Deer Park Dr, Suite Q, Monmouth Junction, NJ 08852, USA