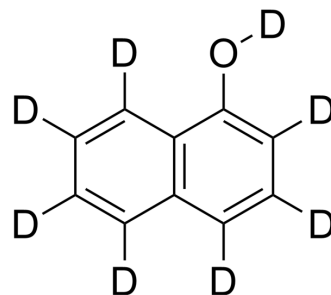


1-Naphthol-d₈

Cat. No.:	HY-Y1309S
CAS No.:	207569-03-7
Molecular Formula:	C ₁₀ D ₈ O
Molecular Weight:	152.22
Target:	Endogenous Metabolite
Pathway:	Metabolic Enzyme/Protease
Storage:	Please store the product under the recommended conditions in the Certificate of Analysis.



BIOLOGICAL ACTIVITY

Description	1-Naphthol-d ₈ is the deuterium labeled 1-Naphthol[1]. 1-naphthol is an excited state proton transfer (ESPT) fluorescent molecular probe[2].
In Vitro	Stable heavy isotopes of hydrogen, carbon, and other elements have been incorporated into drug molecules, largely as tracers for quantitation during the drug development process. Deuteration has gained attention because of its potential to affect the pharmacokinetic and metabolic profiles of drugs ^[1] . MCE has not independently confirmed the accuracy of these methods. They are for reference only.

REFERENCES

[1]. Russak EM, et al. Impact of Deuterium Substitution on the Pharmacokinetics of Pharmaceuticals. *Ann Pharmacother*. 2019 Feb;53(2):211-216.

[2]. Swain J, et al. 1-Naphthol as an ESPT fluorescent molecular probe for sensing thermotropic microenvironmental changes of pluronic F127 in aqueous media. *Phys Chem Chem Phys*. 2015 Jul 14;17(26):16752-9.

Caution: Product has not been fully validated for medical applications. For research use only.

Tel: 609-228-6898

Fax: 609-228-5909

E-mail: tech@MedChemExpress.com

Address: 1 Deer Park Dr, Suite Q, Monmouth Junction, NJ 08852, USA