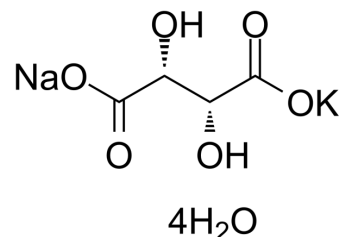


Rochelle salt

Cat. No.:	HY-Y1332
CAS No.:	6381-59-5
Molecular Formula:	$C_4H_{12}KNaO_{10}$
Molecular Weight:	282.22
Target:	Biochemical Assay Reagents
Pathway:	Others
Storage:	4°C, sealed storage, away from moisture * In solvent : -80°C, 6 months; -20°C, 1 month (sealed storage, away from moisture)



SOLVENT & SOLUBILITY

In Vitro

H₂O : 100 mg/mL (354.33 mM; Need ultrasonic)

	Solvent Concentration	Mass	1 mg	5 mg	10 mg
Preparing Stock Solutions	1 mM		3.5433 mL	17.7167 mL	35.4333 mL
	5 mM		0.7087 mL	3.5433 mL	7.0867 mL
	10 mM		0.3543 mL	1.7717 mL	3.5433 mL

Please refer to the solubility information to select the appropriate solvent.

BIOLOGICAL ACTIVITY

Description

Rochelle potassium sodium tartrate is a biochemical reagent that can be used as a biological material or organic compound for life science related research.

Caution: Product has not been fully validated for medical applications. For research use only.

Tel: 609-228-6898

Fax: 609-228-5909

E-mail: tech@MedChemExpress.com

Address: 1 Deer Park Dr, Suite Q, Monmouth Junction, NJ 08852, USA