



www.MedChemExpress.com

Inhibitors, Agonists, Screening Libraries

Lactate Dehydrogenase

LDH

Lactate Dehydrogenase (LDH), which catalyzes the inter-conversion of pyruvate and lactate.

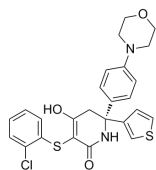
Mammalian lactate dehydrogenase (LDH) comprises three major families of conserved enzymes that catalyse the reversible interconversion of pyruvate and lactate, a key metabolic step in glycolysis and other metabolic pathways. At least five LDH tetrameric isozymes are reported in somatic mammalian tissues, comprising LDHA and LDHB subunits, whereas LDHC₄ is found only in mature testis and spermatozoa, where it is required for male fertility. Lactate dehydrogenase catalyzes the interconversion of pyruvate and lactate with concomitant interconversion of NADH and NAD⁺. At high concentrations of lactate, the enzyme exhibits feedback inhibition, and the rate of conversion of pyruvate to lactate is decreased. Dihydroorotate dehydrogenase (DHODH) is a key enzyme that catalyzes the oxidation of dihydroorotate (DHO) to produce orotate, a key step in pyrimidine biosynthesis.

Lactate Dehydrogenase Inhibitors

(R)-GNE-140

Cat. No.: HY-100742A

(R)-GNE-140 is a potent lactate dehydrogenase A (LDHA) inhibitor, with IC_{50} s of 3 nM and 5 nM for LDHA and LDHB, respectively; (R)-GNE-140 is 18-fold more potent than S enantiomer.

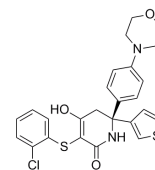


Purity: 99.20%
Clinical Data: No Development Reported
Size: 10 mM × 1 mL, 1 mg, 5 mg, 10 mg, 50 mg, 100 mg

(S)-GNE-140

Cat. No.: HY-100742B

(S)-GNE-140 is the less active enantiomer of GNE-140 which can inhibit Lactate dehydrogenase A (LDHA).

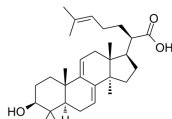


Purity: 97.79%
Clinical Data: No Development Reported
Size: 1 mg, 5 mg, 10 mg, 50 mg, 100 mg

3-Dehydrotrametenolic acid

Cat. No.: HY-N2177

3-Dehydrotrametenolic acid, isolated from the sclerotium of *Poria cocos*, is a lactate dehydrogenase (LDH) inhibitor. 3-Dehydrotrametenolic acid promotes adipocyte differentiation in vitro and acts as an insulin sensitizer in vivo.



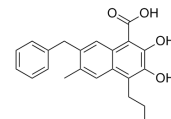
Purity: >99.0%
Clinical Data: No Development Reported
Size: 5 mg, 10 mg

FX-11

(LDHA Inhibitor FX11)

Cat. No.: HY-16214

FX-11 (LDHA Inhibitor FX11) is a potent lactate dehydrogenase A (LDHA) inhibitor with an IC_{50} of 23.3 μ M for HeLa cells, K_i value of 8 μ M.

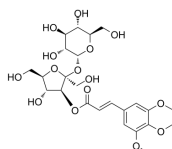


Purity: 98.11%
Clinical Data: No Development Reported
Size: 10 mM × 1 mL, 5 mg, 10 mg, 50 mg, 100 mg

Glomeratose A

Cat. No.: HY-N2498

Glomeratose A is a lactate dehydrogenase inhibitor, isolated from *Polygala tenuifolia*.

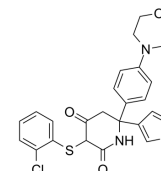


Purity: 99.79%
Clinical Data: No Development Reported
Size: 10 mM × 1 mL, 5 mg

GNE-140 racemate

Cat. No.: HY-100742

GNE-140 racemate is a racemate mixture of (R)-GNE-140 and (S)-GNE-140. GNE-140 racemate is a potent lactate dehydrogenase A (LDHA) inhibitor.

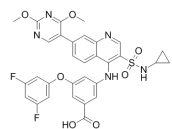


Purity: 99.66%
Clinical Data: No Development Reported
Size: 10 mM × 1 mL, 1 mg, 5 mg, 10 mg, 50 mg, 100 mg

GSK2837808A

Cat. No.: HY-100681

GSK2837808A is a potent and selective lactate dehydrogenase A (LDHA) inhibitor with IC_{50} s of 1.9 and 14 nM for LDHA and LDHB, respectively.

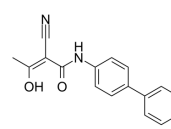


Purity: >99.0%
Clinical Data: No Development Reported
Size: 10 mM × 1 mL, 2 mg, 5 mg, 10 mg, 25 mg, 50 mg, 100 mg

hDHODH-IN-1

Cat. No.: HY-135658

hDHODH-IN-1 is a human dihydroorotate dehydrogenase (hDHODH) inhibitor. hDHODH-IN-1 has anti-inflammatory effect.

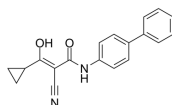


Purity: 99.61%
Clinical Data: No Development Reported
Size: 10 mM × 1 mL, 5 mg, 10 mg, 50 mg, 100 mg

hDHODH-IN-2

Cat. No.: HY-135654

hDHODH-IN-2 is an analogue of the active metabolite of Leflunomide. hDHODH-IN-2 is a human dihydroorotate dehydrogenase (hDHODH) inhibitor. hDHODH-IN-1 has anti-inflammatory activity.



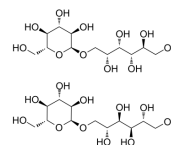
Purity: >98%
Clinical Data: No Development Reported
Size: 1 mg, 5 mg

Isomalt

(Palatinitol)

Cat. No.: HY-N7393

Isomalt (Palatinitol), a well-tolerated, non-toxic polyol and a protein-stabilizing excipient, stabilizes lactate dehydrogenase (LDH) moderately during freeze-drying, and performs better during storage.

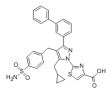


Purity: >98.0%
Clinical Data: No Development Reported
Size: 10 mM × 1 mL, 100 mg

LDH-IN-1

Cat. No.: HY-111108

LDH-IN-1 is a novel pyrazole-based inhibitor of human lactate dehydrogenase (LDH) with IC_{50} s of 32 and 27 nM for LDHA and LDHB, respectively.



Purity: 99.84%

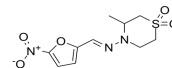
Clinical Data: No Development Reported

Size: 10 mM × 1 mL, 5 mg, 10 mg, 25 mg, 50 mg, 100 mg

Nifurtimox

Cat. No.: HY-W040073

Nifurtimox, an antiprotozoal agent, which is generally used for the treatment of infections with *Trypanosoma cruzi*, has been used in the therapy of neuroblastoma. Nifurtimox affects enzyme activity of lactate dehydrogenase (LDH).



Purity: 99.64%

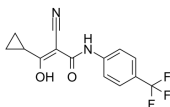
Clinical Data: Launched

Size: 10 mM × 1 mL, 5 mg, 10 mg, 50 mg, 100 mg

PfDHODH-IN-1

Cat. No.: HY-135648

PfDHODH-IN-1 is an analogue of the active metabolite of Leflunomide. PfDHODH-IN-1 is a *Plasmodium falciparum* dihydroorotate dehydrogenase (PfDHODH) inhibitor. PfDHODH-IN-1 has antimalarial activity.



Purity: >98%

Clinical Data: No Development Reported

Size: 1 mg, 5 mg