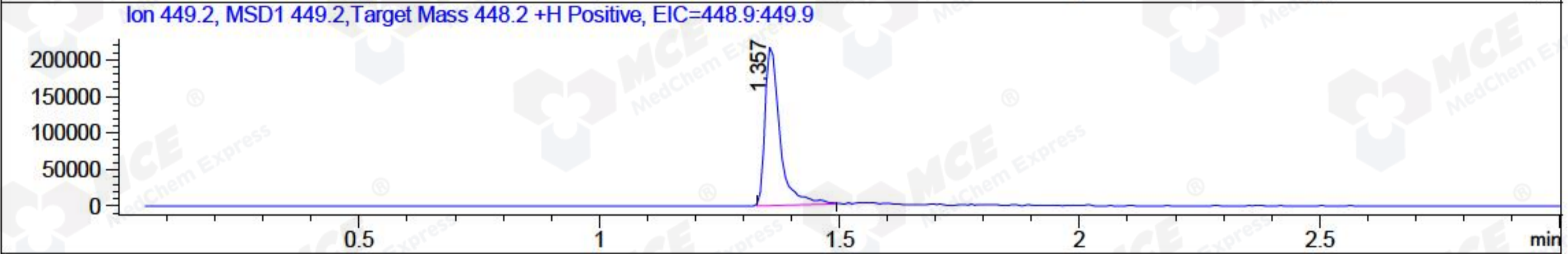
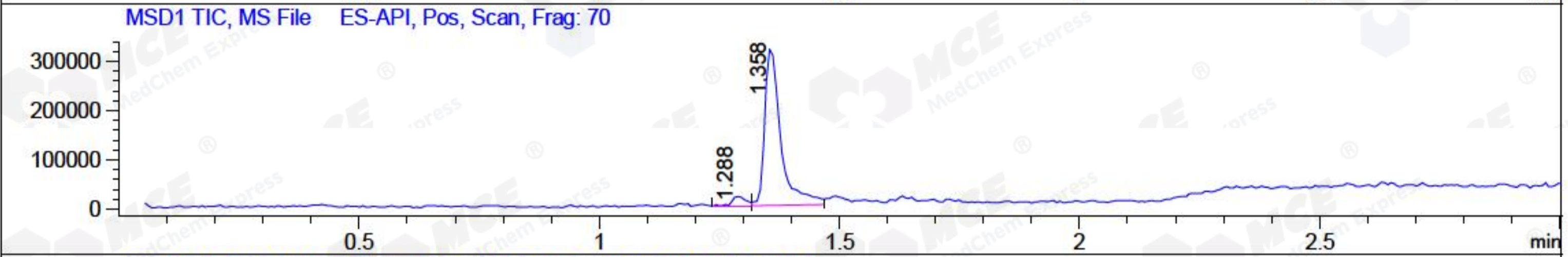
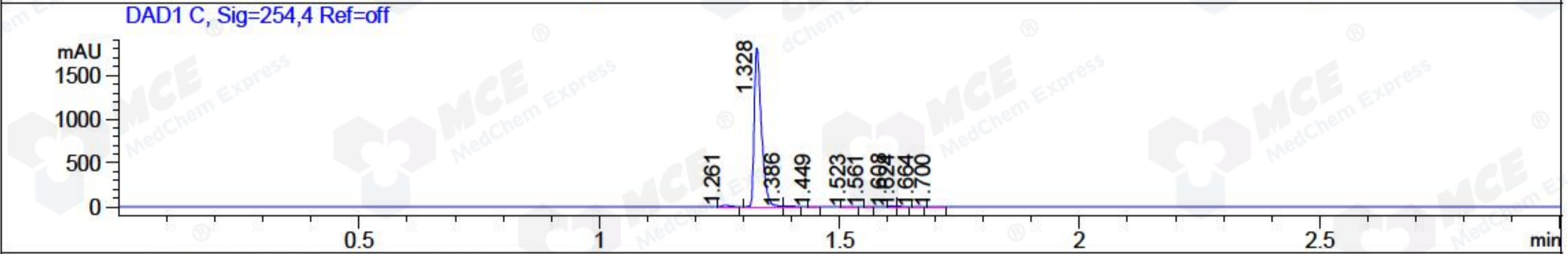
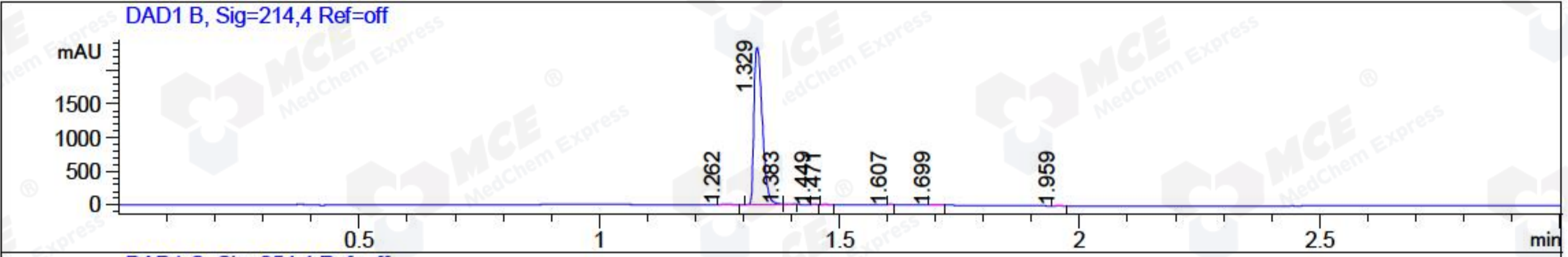


File ..1\DATA\2018\20181025\460\BIZ2018-024-CXL5.D Tgt Mass (CHM):
 Injection Date : 25 Oct 18 11:30 am +0800 Seq. Line : 27
 Sample Name : BIZ2018-024-CXL5 Location : P2-D-09
 Acq. Operator : LQ_1052 Inj : 1
 Spec. Reported : MS Integration Inj Volume : 1 ul
 Acq. Method : D:\Chem32\1\data\2018\20181025\460\1-POS-3MIN-1.M
 Analysis Method : D:\CHEM32\1\DATA\2018\20181025\460\1-POS-3MIN-1.M
 Catalog No : HY-112843 Batch#33656 A-RP-314
 Method Info : Mobile Phase: A: water(0.01%TFA) B:ACN(0.01%TFA)
 Gradient: 5% to 95%B within 1.3 min
 Flow Rate :1.8ml/min
 Column :SunFire C18, 4.6*50mm,3.5um A-RP-314
 Oven Temperature : 45□



Integration Results for DAD1 B, Sig=214,4 Ref=off

RetTim	Width	Area	Height	Area%	MS (+)
1.26	0.02	15.17	13.88	0.53	167
1.33	0.02	2821.41	2336.62	98.77	449
1.38	0.02	7.21	7.41	0.25	449
1.45	0.01	1.33	1.88	0.05	449
1.47	0.01	2.83	3.63	0.10	449
1.61	0.01	2.73	4.26	0.10	449
1.70	0.02	2.93	2.78	0.10	449
1.96	0.02	3.08	2.95	0.11	141

Integration Results for DAD1 C, Sig=254,4 Ref=off

RetTim	Width	Area	Height	Area%	MS (+)
1.26	0.02	18.01	16.52	0.94	167
1.33	0.02	1870.29	1813.24	98.14	449
1.39	0.02	4.59	4.01	0.24	449
1.45	0.01	0.96	1.36	0.05	449
1.52	0.02	0.57	0.52	0.03	449
1.56	0.01	0.31	0.48	0.02	449

1.61	0.01	4.71	5.64	0.25	449
1.62	0.01	2.33	2.88	0.12	449
1.66	0.01	0.56	0.83	0.03	449
1.70	0.02	3.31	2.94	0.17	449

Integration Results for MSD1 TIC, MS File

RetTim	Width	Area	Height	Area%	MS (+)
1.29	0.03	37984.26	18529.81	4.84	167
1.36	0.03	746917.88	322321.59	95.16	449

Ret. Time: 1.29

<<<< POSITIVE SPECTRA >>>>



Ret. Time: 1.36

