

File ..1\DATA\2019\20190326\560\BIZ2019-325-CXL1.D Tgt Mass (CHM):

Injection Date : 26 Mar 19 11:30 am +0800 Seq. Line : 26

Sample Name : BIZ2019-325-CXL1 Location : P2-C-02

Acq. Operator : LQ_1052 Inj : 1

Spec. Reported : MS Integration Inj Volume : 1 ul

Acq. Method : D:\Chem32\1\data\2019\20190326\560\1-POS-3MIN-1.M

Analysis Method : D:\CHEM32\1\DATA\2019\20190326\560\1-POS-3MIN-1.M

Catalog No : HY-12306 Batch#39604

Method Info : Mobile Phase: A: water(0.01%TFA) B:ACN(0.01%TFA)

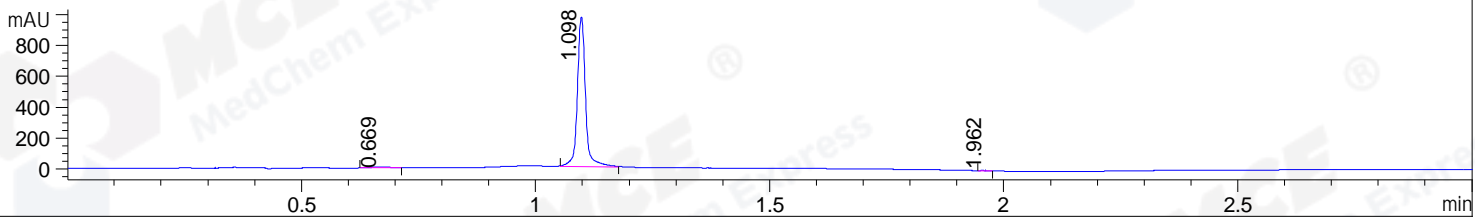
Gradient: 5% to 95%B within 1.3 min

Flow Rate :1.8ml/min

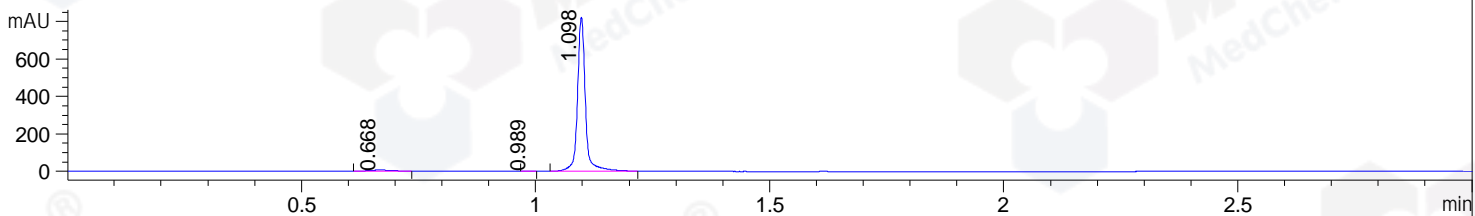
Column :SunFire C18, 4.6*50mm,3.5um A-RP-314

Oven Temperature : 45

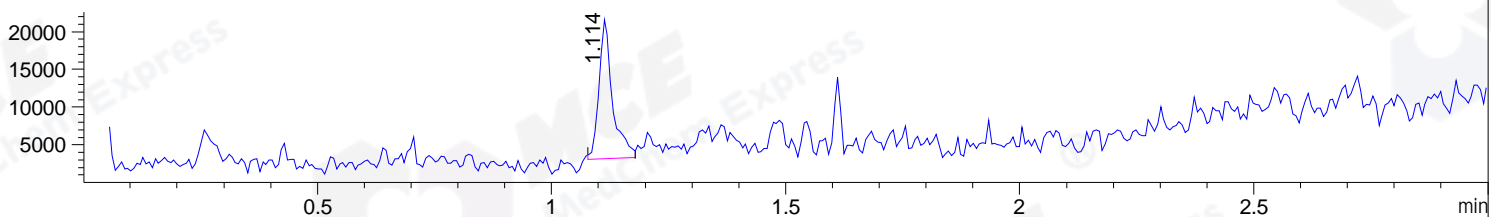
DAD1 B, Sig=214,4 Ref=off



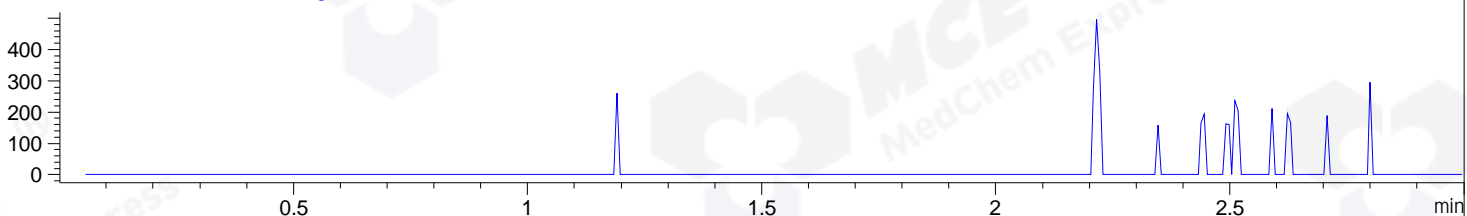
DAD1 C, Sig=254,4 Ref=off



MSD1 TIC, MS File ES-API, Pos, Scan, Frag: 70



Ion 429.9, MSD1 429.9, Target Mass 428.9 +H Positive, EIC=429.6:430.6



Integration Results for DAD1 B, Sig=214,4 Ref=off

RetTim	Width	Area	Height	Area%	MS (+)
0.67	0.05	16.74	5.89	1.41	ND
1.10	0.02	1173.28	967.99	98.52	408
1.96	0.02	0.92	0.86	0.08	142

Integration Results for DAD1 C, Sig=254,4 Ref=off

RetTim	Width	Area	Height	Area%	MS (+)
0.67	0.05	17.03	5.52	1.74	ND
0.99	0.02	0.45	0.32	0.05	ND
1.10	0.02	960.64	821.79	98.21	408

Integration Results for MSD1 TIC, MS File

RetTim	Width	Area	Height	Area%	MS (+)
1.11	0.03	37098.54	18508.69	100.00	410

Ret. Time: 1.11

<<<< POSITIVE SPECTRA >>>>

ES-API Positive

