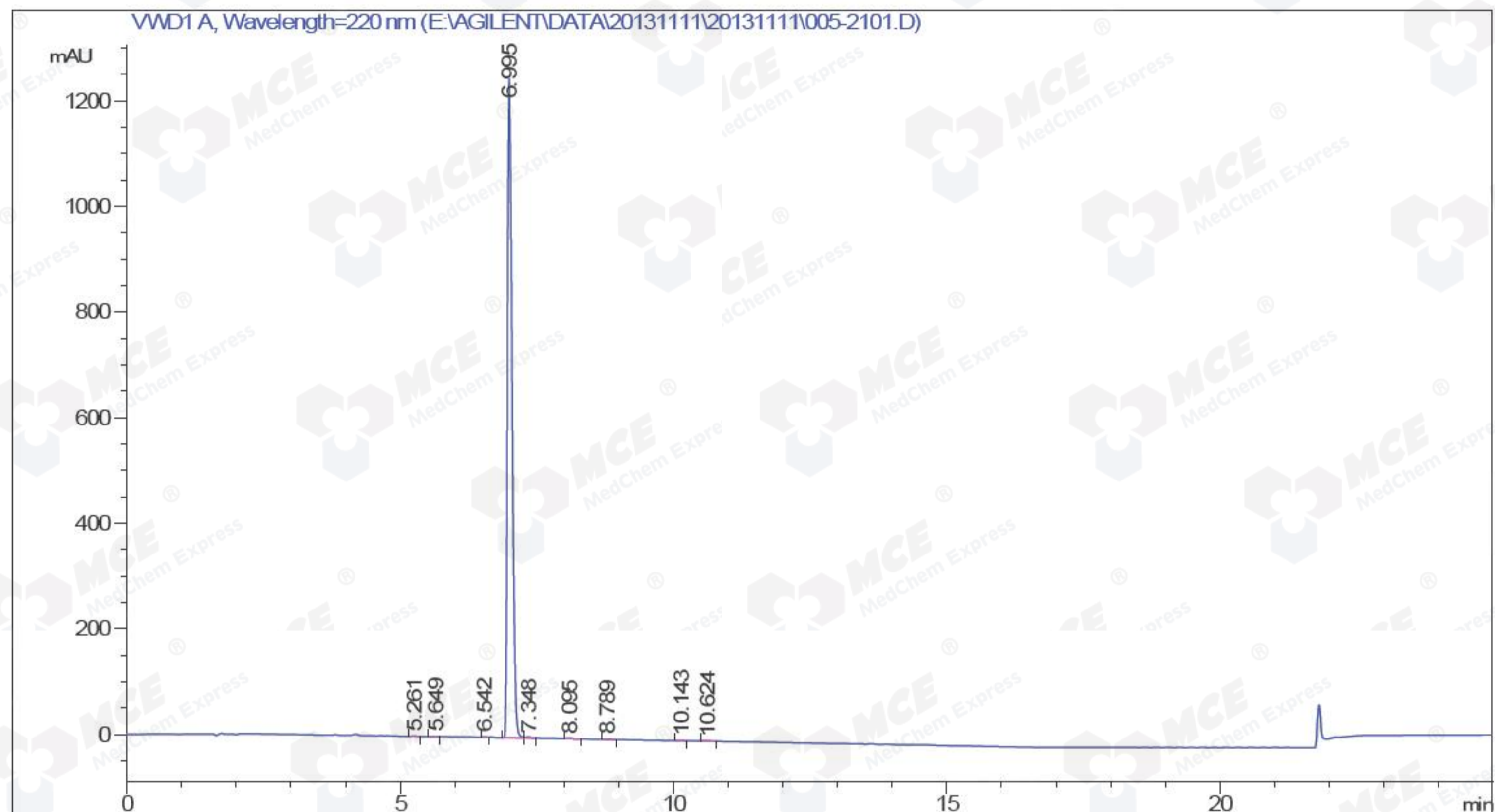


Sample Name: CW1666-042-1_1

Acq. Operator : Seq. Line : 21
 Acq. Instrument : Instrument 1 Location : Vial 5
 Injection Date : 11/11/2013 1:03:36 PM Inj : 1
 Inj Volume : 5 µl
 Method : E:\AGILENT\DATA\20131111\20131111\30-90A, 15MIN.M
 Last changed : 9/5/2013 11:31:18 AM
 Method Info : HPLC-03
 Catalog No. : HY-15233 Batch#10114
 A-RP-60



 Area Percent Report

Sorted By : Signal
 Multiplier : 1.0000
 Dilution : 1.0000
 Use Multiplier & Dilution Factor with ISTDs

Signal 1: VWD1 A, Wavelength=220 nm

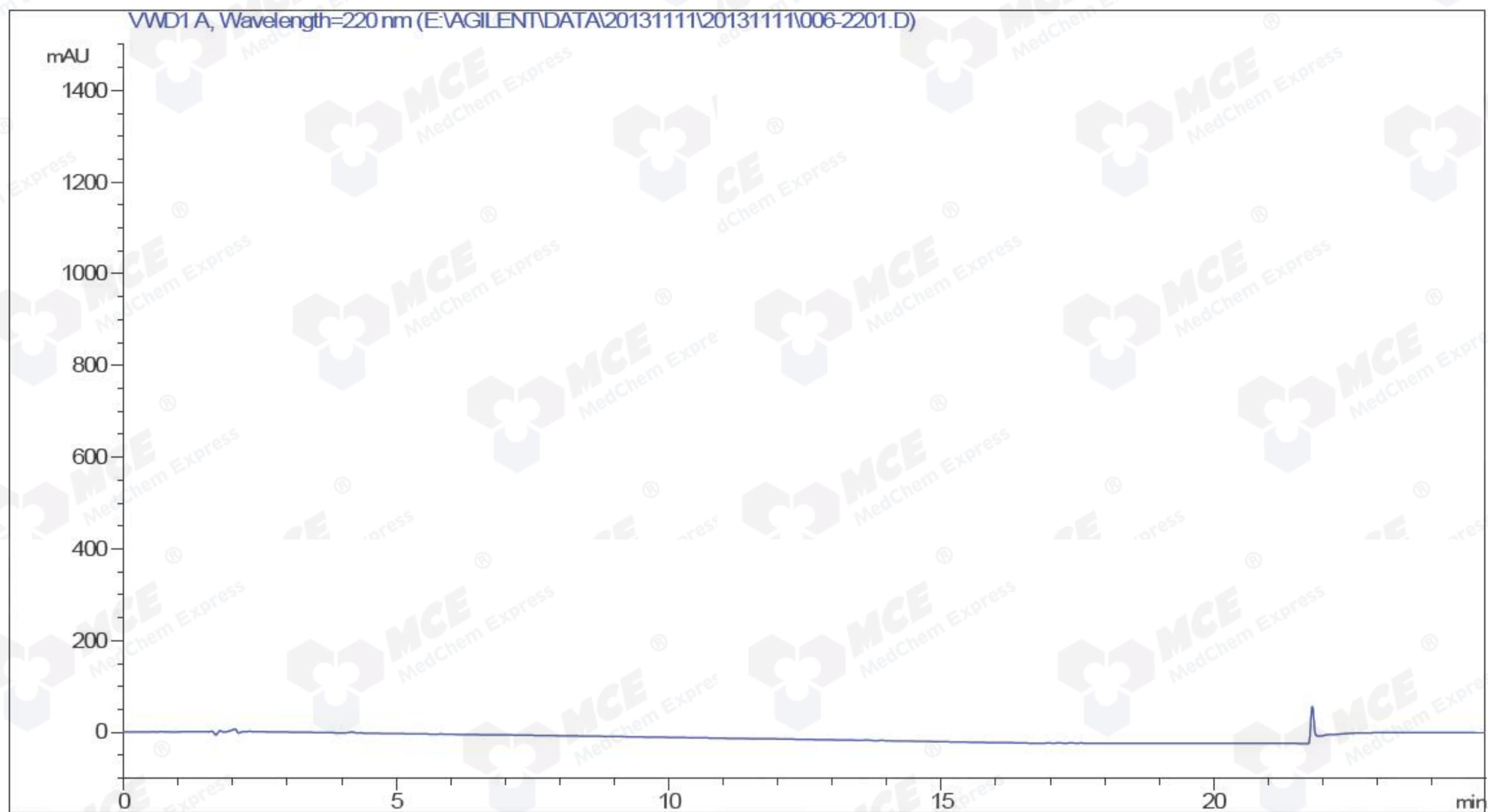
Peak #	RetTime [min]	Type	Width [min]	Area mAU	Height [mAU]	Area %
1	5.261	MM R	0.0884	5.39651	1.01774	0.0737
2	5.649	MF R	0.1160	4.93595	7.09027e-1	0.0674
3	6.542	MF R	0.0739	5.26112	1.18615	0.0719
4	6.995	MF R	0.0970	7276.23730	1249.81897	99.3829
5	7.348	FM R	0.1044	11.53344	1.84182	0.1575
6	8.095	MM R	0.0784	4.75114	1.00988	0.0649
7	8.789	FM R	0.1380	4.14129	5.00003e-1	0.0566
8	10.143	MM R	0.1095	5.40843	8.23561e-1	0.0739
9	10.624	MM R	0.1849	3.75470	3.38416e-1	0.0513

Totals : 7321.41989 1257.24556

*** End of Report ***

Sample Name: CW1666-042-1_0

Acq. Operator	:		Seq. Line	:	22
Acq. Instrument	:	Instrument 1	Location	:	Vial 6
Injection Date	:	11/11/2013 1:03:36 PM	Inj	:	1
			Inj Volume	:	5 µl
Acq. Method	:	E:\AGILENT\DATA\20131111\20131111\30-90A,15MIN.M			
Last changed	:	9/5/2013 11:31:18 AM			
Analysis Method	:	E:\AGILENT\DATA\20131111\20131111\30-90A,15MIN.M			
Last changed	:	11/11/2013 2:21:24 PM			
		(modified after loading)			
Method Info	:	HPLC-03			
Catalog No.	:	HY-15233 Batch#10114			
		A-RP-60			



Area Percent Report

Sorted By	:	Signal
Multiplier	:	1.0000
Dilution	:	1.0000

Use Multiplier & Dilution Factor with ISTDs

No peaks found

*** End of Report ***