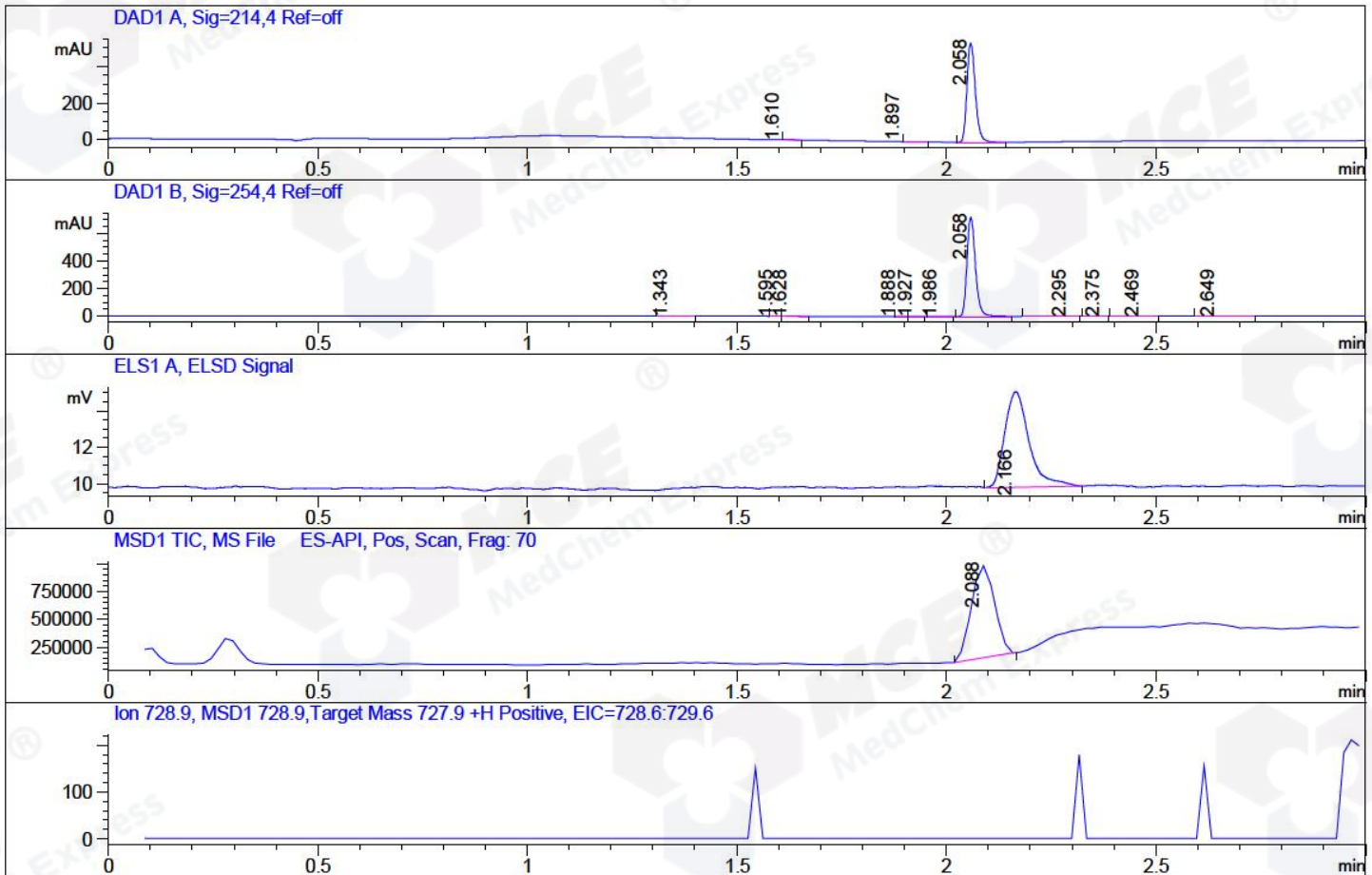


File ..\2018\20181011\20181011\CPK2018-O10-19224.D Tgt Mass (CHM):
Injection Date : 11 Oct 18 9:17 am +0800 Seq. Line : 14
Sample Name : CPK2018-O10-19224 Location : P1-B-02
Acq. Operator : SYSTEM Inj : 1
Spec. Reported : MS Integration Inj Volume : 1 ul
Acq. Method : D:\LCMS03\Data\2018\20181011\20181011\1-POS-3MIN.M
Analysis Method : D:\LCMS03\Data\2018\20181011\20181011\1-POS-3MIN.M
Catalog No : HY-15591A Batch#19224
Method Info : Mobile Phase: A: water(0.01%TFA) B:ACN(0.01%TFA)
Gradient: 5% to 95%B within 1.3 min
Flow Rate :1.8ml/min
Column :SunFire C18, 4.6*50mm,3.5um A-RP-186
Oven Temperature : 45C



Integration Results for DAD1 A, Sig=214,4 Ref=off

RetTim	Width	Area	Height	Area%	MS (+)
1.61	0.03	0.70	-0.17	0.09	102
1.90	0.04	1.22	0.16	0.16	233
2.06	0.02	753.10	538.22	99.75	607

Integration Results for DAD1 B, Sig=254,4 Ref=off

RetTim	Width	Area	Height	Area%	MS (+)
1.34	0.03	2.18	1.07	0.21	102
1.59	0.01	0.25	0.30	0.02	102
1.63	0.02	1.26	0.91	0.12	102
1.89	0.02	0.14	0.14	0.01	233
1.93	0.02	0.38	0.31	0.04	233
1.99	0.03	0.93	0.54	0.09	233
2.06	0.02	1006.77	717.41	99.10	607
2.30	0.03	1.11	0.47	0.11	105
2.38	0.02	0.20	0.12	0.02	105
2.47	0.04	0.78	0.29	0.08	105
2.65	0.04	1.90	0.70	0.19	105

Integration Results for ELS1 A, ELSD Signal

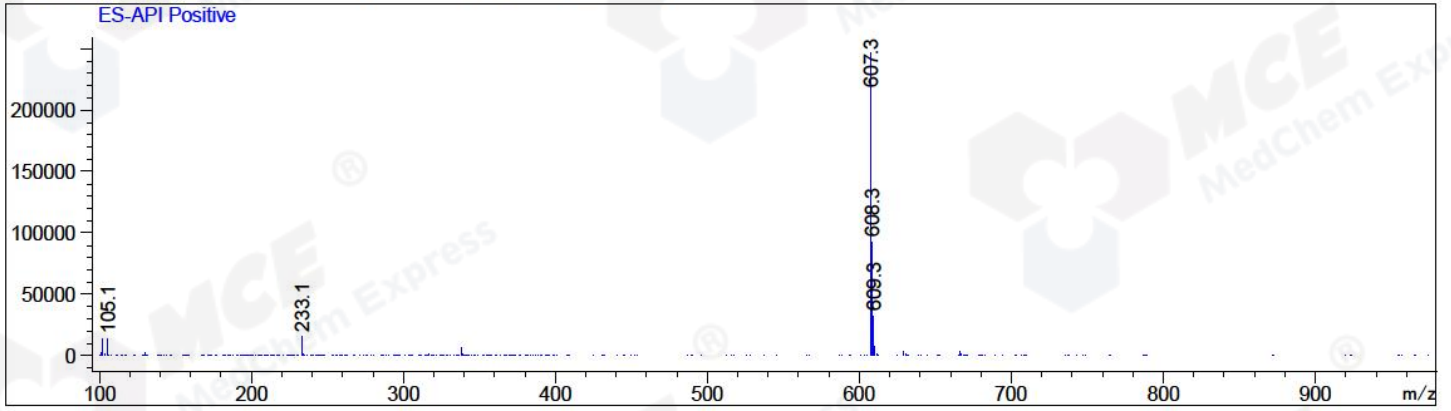
RetTim	Width	Area	Height	Area%	MS (+)
2.17	0.06	21.10	5.22	100.00	607

Integration Results for MSD1 TIC, MS File

RetTim	Width	Area	Height	Area%	MS (+)
2.09	0.06	3185561.50	829528.38	100.00	607

Ret. Time: 2.09

<<<< POSITIVE SPECTRA >>>>



*** End of Report ***