

File ..\DATA\2019\20190302\553\CPK2019-228-20732.D Tgt Mass (CHM):

Injection Date : 2 Mar 19 12:58 pm +0800 Seq. Line : 29

Sample Name : CPK2019-228-20732 Location : P2-B-06

Acq. Operator : LQ_1052 Inj : 1

Spec. Reported : MS Integration Inj Volume : 1 ul

Acq. Method : D:\Chem32\1\data\2019\20190302\553\1-POS-3MIN-1.M

Analysis Method : D:\CHEM32\1\DATA\2019\20190302\553\1-POS-3MIN-1.M

Catalog No : HY-16265 Batch#20732

Method Info : Mobile Phase: A: water(0.01%TFA) B:ACN(0.01%TFA)

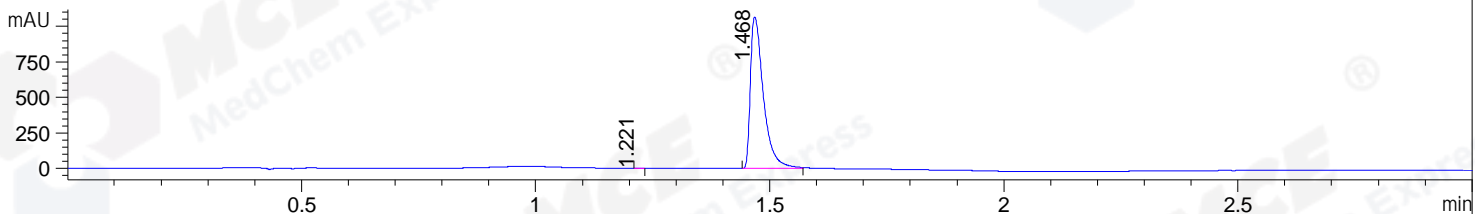
Gradient: 5% to 95%B within 1.3 min

Flow Rate :1.8ml/min

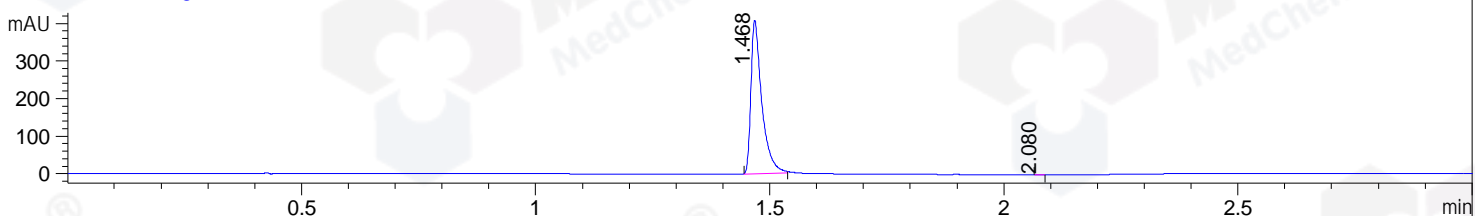
Column :SunFire C18, 4.6*50mm,3.5um A-RP-314

Oven Temperature : 45

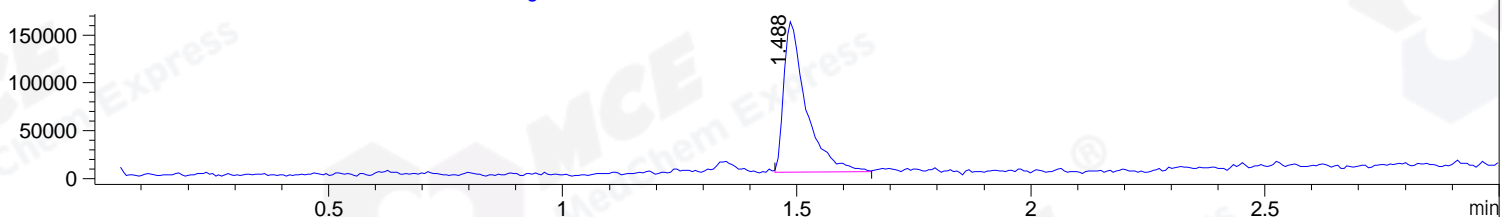
DAD1 B, Sig=214,4 Ref=off



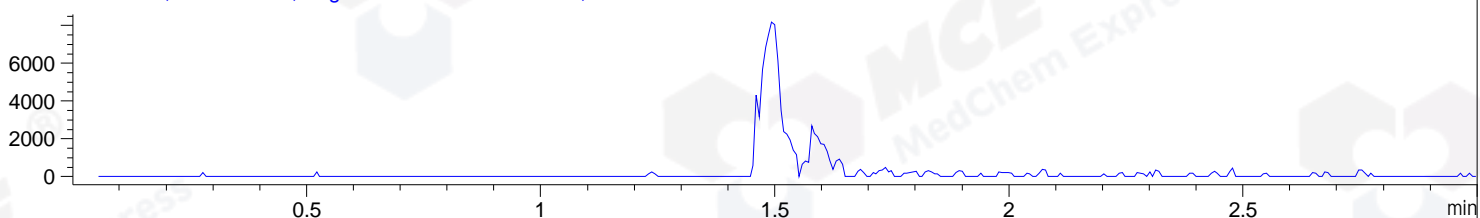
DAD1 C, Sig=254,4 Ref=off



MSD1 TIC, MS File ES-API, Pos, Scan, Frag: 70



Ion 467.3, MSD1 467.3, Target Mass 466.3 +H Positive, EIC=467:468



Integration Results for DAD1 B, Sig=214,4 Ref=off

RetTim	Width	Area	Height	Area%	MS (+)
1.22	0.02	1.03	1.12	0.05	ND
1.47	0.03	2057.74	1065.99	99.95	468

Integration Results for DAD1 C, Sig=254,4 Ref=off

RetTim	Width	Area	Height	Area%	MS (+)
1.47	0.02	660.37	408.79	99.93	468
2.08	0.01	0.44	0.53	0.07	142

Integration Results for MSD1 TIC, MS File

RetTim	Width	Area	Height	Area%	MS (+)
1.49	0.05	520537.88	157075.77	100.00	468

Ret. Time: 1.49

<<<< POSITIVE SPECTRA >>>>

ES-API Positive

