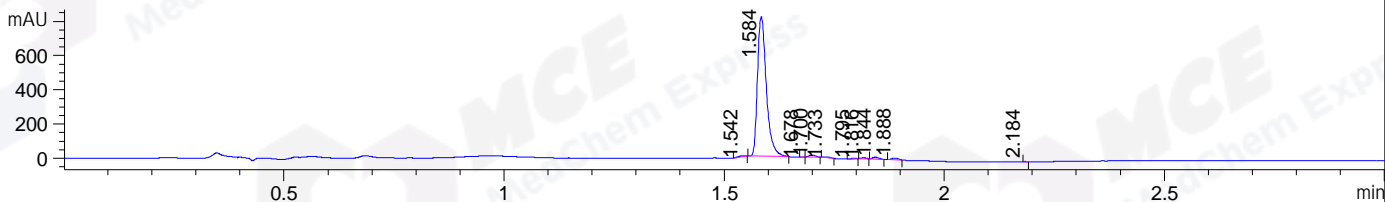
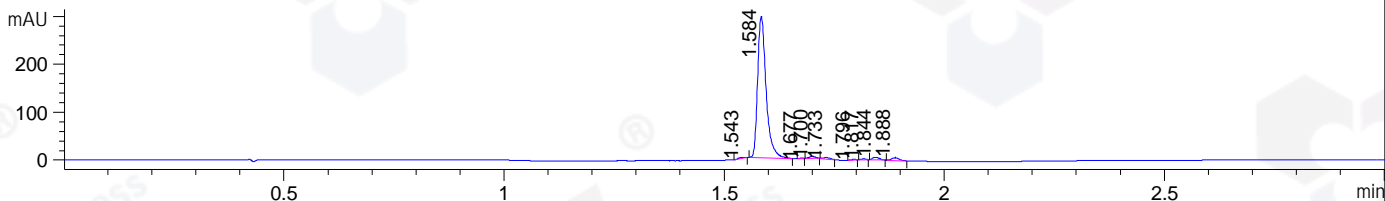


File ..DATA\2019\20190215\543\BIZ2019-215-WYQ2.D Tgt Mass (CHM):
 Injection Date : 15 Feb 19 5:21 pm +0800 Seq. Line : 20
 Sample Name : BIZ2019-215-WYQ2 Location : P2-C-07
 Acq. Operator : LQ_1052 Inj : 1
 Spec. Reported : MS Integration Inj Volume : 2 ul
 Acq. Method : D:\Chem32\1\data\2019\20190215\543\1-POS-3MIN-1.M
 Analysis Method : D:\CHEM32\1\DATA\2019\20190215\543\1-POS-3MIN-1.M
 Catalog No : HY-B0754 Batch#37570
 Method Info : Mobile Phase: A: water(0.01%TFA) B:ACN(0.01%TFA)
 Gradient: 5% to 95%B within 1.3 min
 Flow Rate :1.8ml/min
 Column :SunFire C18, 4.6*50mm,3.5um A-RP-314
 Oven Temperature : 45

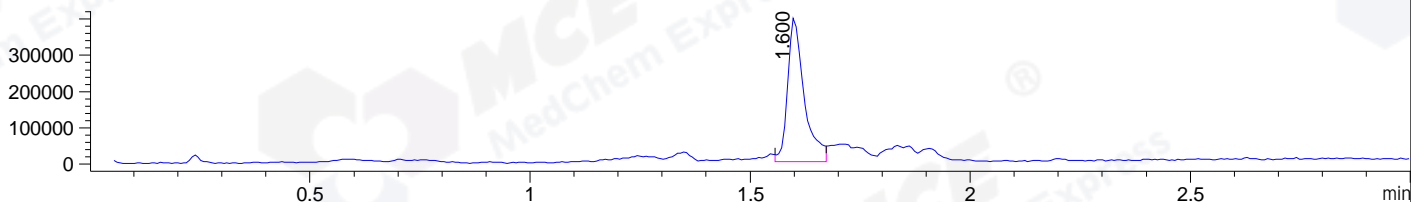
DAD1 B, Sig=214,4 Ref=off



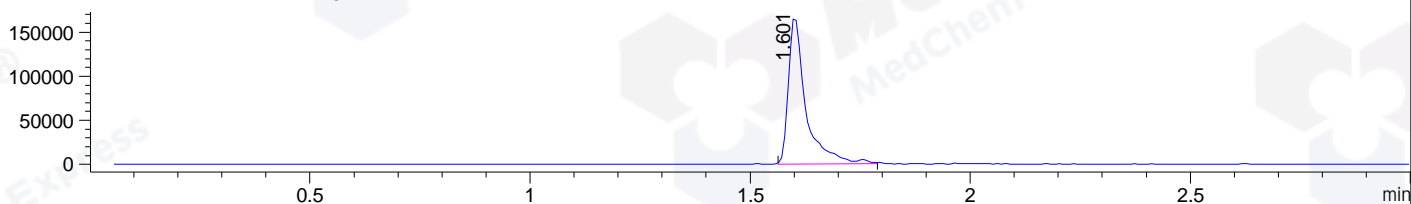
DAD1 C, Sig=254,4 Ref=off



MSD1 TIC, MS File ES-API, Pos, Scan, Frag: 70



Ion 599.2, MSD1 599.2, Target Mass 598.2 +H Positive, EIC=598.9:599.9



Integration Results for DAD1 B, Sig=214,4 Ref=off

RetTim	Width	Area	Height	Area%	MS (+)
1.54	0.02	4.62	4.53	0.39	590
1.58	0.02	1143.47	816.34	95.81	599
1.68	0.01	0.42	1.05	0.04	599
1.70	0.02	12.15	12.07	1.02	599
1.73	0.02	4.70	5.14	0.39	599
1.79	0.01	2.77	3.09	0.23	641
1.82	0.01	4.39	5.44	0.37	641
1.84	0.02	9.90	10.12	0.83	641
1.89	0.02	10.59	10.15	0.89	581
2.18	0.01	0.51	1.17	0.04	142

Integration Results for DAD1 C, Sig=254,4 Ref=off

RetTim	Width	Area	Height	Area%	MS (+)
1.54	0.02	2.85	2.36	0.68	590
1.58	0.02	394.90	295.41	93.99	599
1.68	0.01	0.33	0.53	0.08	599
1.70	0.02	4.28	4.37	1.02	599

1.73	0.02	2.97	2.76	0.71	599
1.80	0.02	0.83	0.92	0.20	641
1.82	0.01	1.29	1.76	0.31	641
1.84	0.02	5.72	5.65	1.36	641
1.89	0.02	6.99	5.89	1.66	581

Integration Results for MSD1 TIC, MS File

RetTim	Width	Area	Height	Area%	MS (+)
1.60	0.04	1038228.06	396810.53	100.00	599

Ret. Time: 1.60

<<<< POSITIVE SPECTRA >>>>

ES-API Positive

