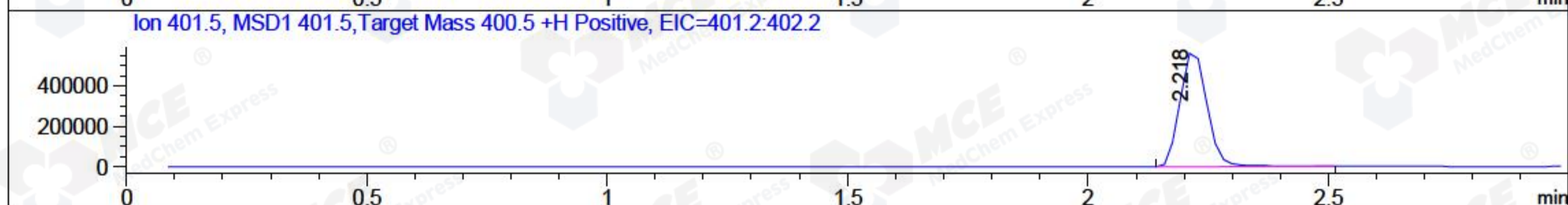
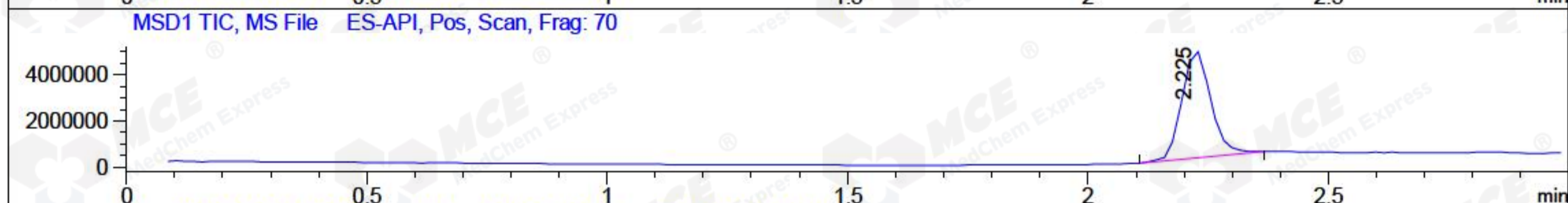
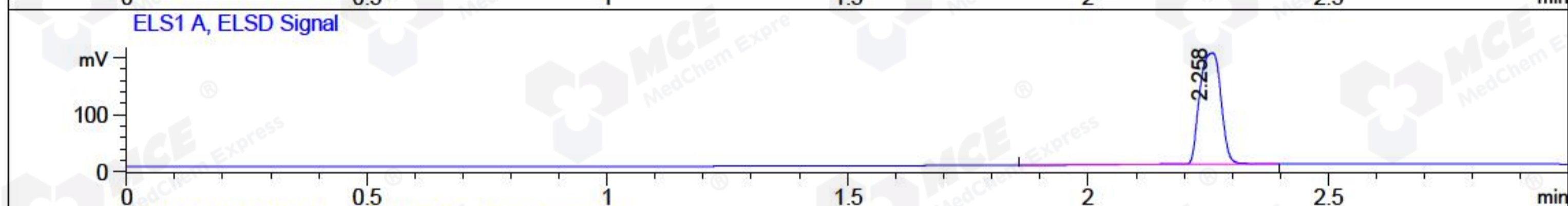
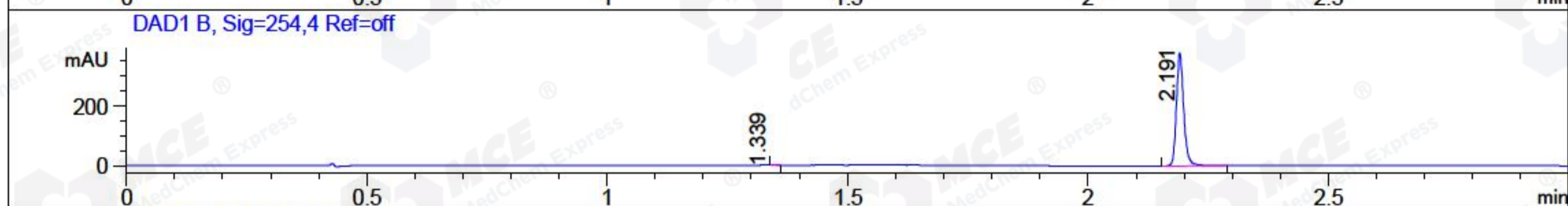
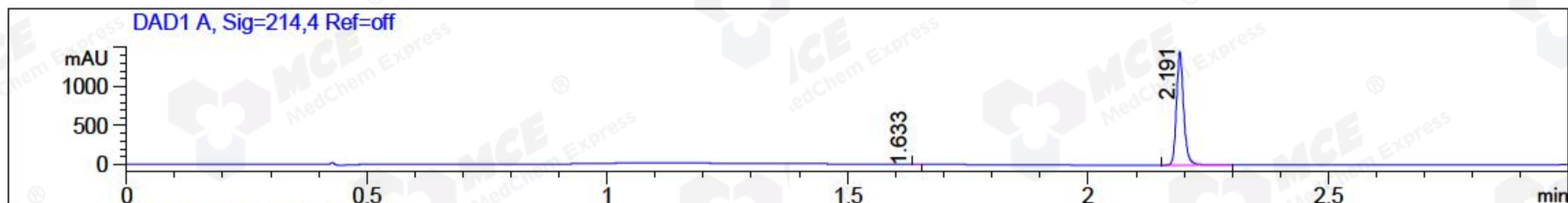


File ..018\20180315\20180315-2\CPK2018-315-16952.D Tgt Mass (CHM):
 Injection Date : 15 Mar 18 10:11 pm +0800 Seq. Line : 89
 Sample Name : CPK2018-315-16952 Location : P2-C-04
 Acq. Operator : SYSTEM Inj : 1
 Spec. Reported : MS Integration Inj Volume : 1 ul
 Acq. Method : D:\LCMS03\Data\2018\20180315\20180315-2\1-POS-3MIN.M
 Analysis Method : D:\LCMS03\Data\2018\20180315\20180315-2\1-POS-3MIN.M
 Catalog No : HY-N0089 Batch#16952
 Method Info : Mobile Phase: A: water(0.01%TFA) B:ACN(0.01%TFA)
 Gradient: 5% to 95%B within 1.3 min
 Flow Rate :1.8ml/min
 Column :SunFire C18, 4.6*50mm,3.5um A-RP-186
 Oven Temperature : 45C



Integration Results for DAD1 A, Sig=214,4 Ref=off

RetTim	Width	Area	Height	Area%	MS (+)
1.63	0.01	0.19	0.04	0.01	233
2.19	0.02	1523.57	1449.54	99.99	823

Integration Results for DAD1 B, Sig=254,4 Ref=off

RetTim	Width	Area	Height	Area%	MS (+)
1.34	0.01	0.12	-0.00	0.03	157
2.19	0.02	400.11	376.93	99.97	823

Integration Results for ELS1 A, ELSD Signal

RetTim	Width	Area	Height	Area%	MS (+)
2.26	0.05	604.70	195.90	100.00	823

Integration Results for MSD1 TIC, MS File

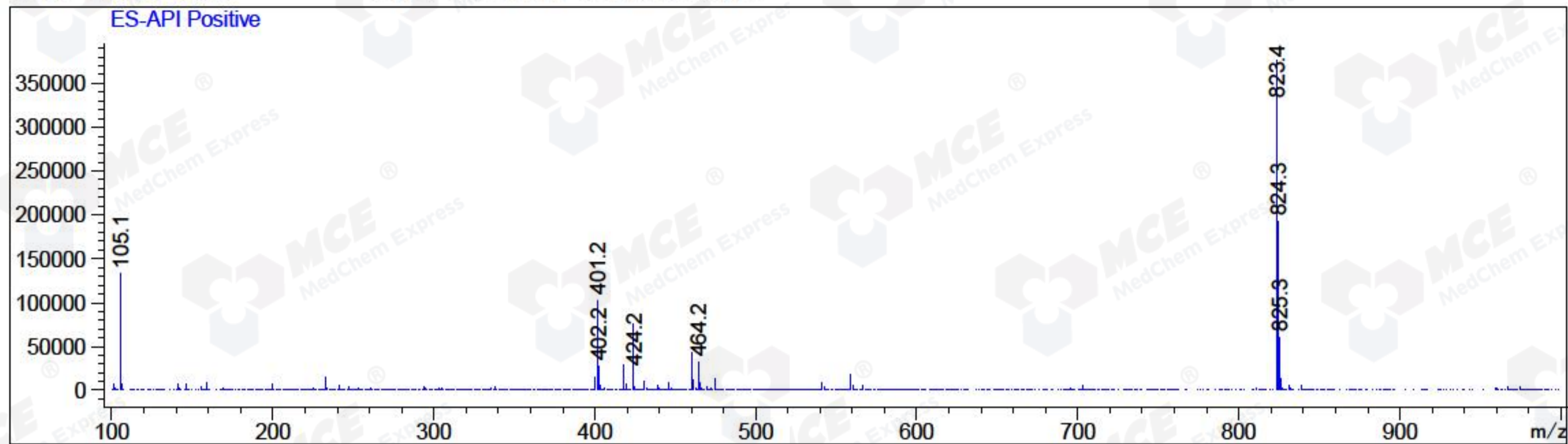
2.22 0.06 19198646.00 4644444.00 100.00 823

RetTim Width Area Height Area% MS (+)

-----|-----|-----|-----|-----|-----|

Ret. Time: 2.22

<<<< POSITIVE SPECTRA >>>>



*** End of Report ***