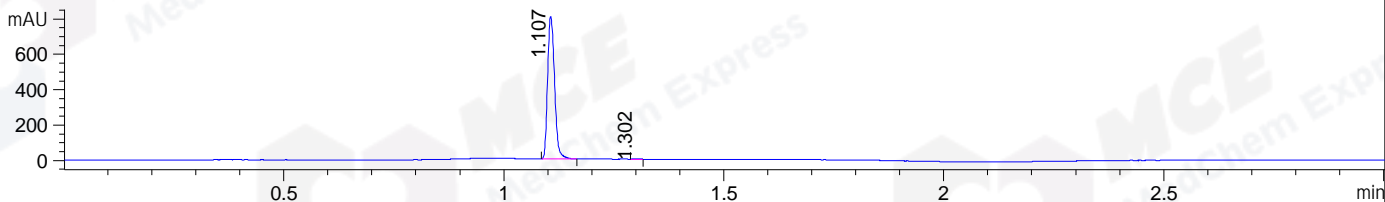
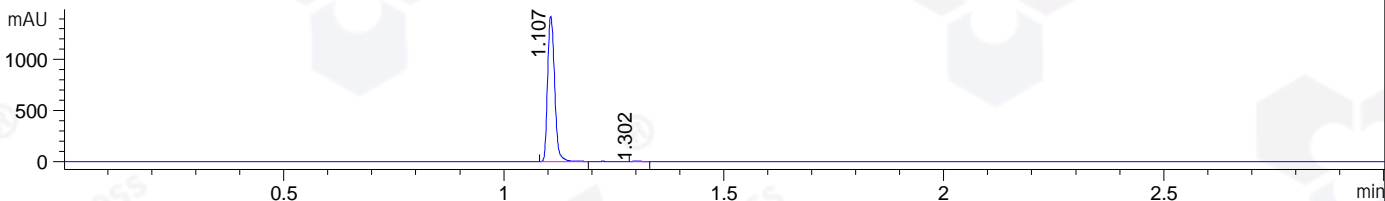


File ..\DATA\2019\20191107\758\CPK2019-N07-22276.D Tgt Mass (CHM):
Injection Date : 7 Nov 19 2:58 pm +0800 Seq. Line : 55
Sample Name : CPK2019-N07-22276 Location : P1-B-04
Acq. Operator : ZJ_1432 Inj : 1
Spec. Reported : MS Integration Inj Volume : 1 ul
Acq. Method : D:\Chem32\1\data\2019\20191107\758\1-POS-3MIN.M
Analysis Method : D:\CHEM32\1\DATA\2019\20191107\758\1-POS-3MIN.M
Catalog No : HY-100016 Batch#22276
Method Info : Mobile Phase: A: water(0.01%TFA) B:ACN(0.01%TFA)
Gradient: 5% to 95%B within 1.3 min
Flow Rate :1.8ml/min
Column :SunFire C18, 4.6*50mm,3.5um A-RP-433
Oven Temperature : 45□

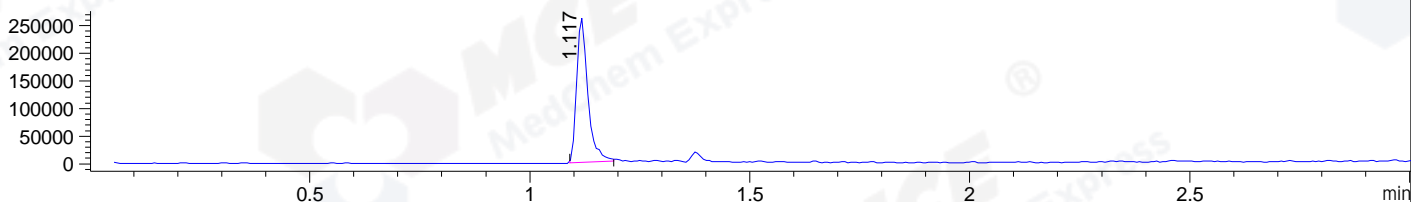
DAD1 B, Sig=214,4 Ref=off



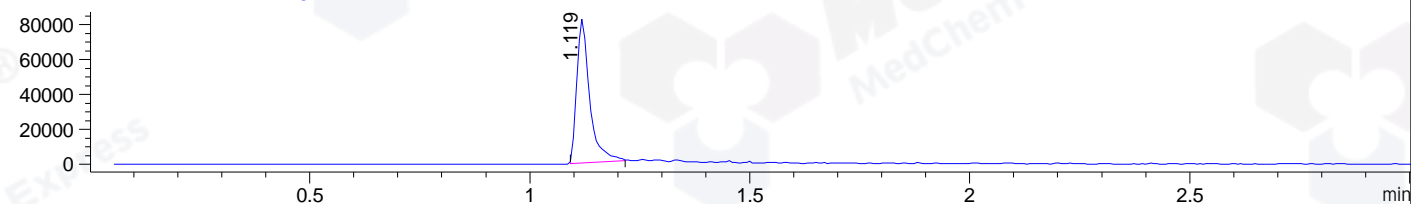
DAD1 C, Sig=254,4 Ref=off



MSD1 TIC, MS File ES-API, Pos, Scan, Frag: 70



Ion 462, MSD1 462, Target Mass 461 +H Positive, EIC=461.7:462.7



Integration Results for DAD1 B, Sig=214,4 Ref=off

RetTim	Width	Area	Height	Area%	MS (+)
1.11	0.02	888.03	806.35	99.80	232
1.30	0.02	1.80	1.92	0.20	462

Integration Results for DAD1 C, Sig=254,4 Ref=off

RetTim	Width	Area	Height	Area%	MS (+)
1.11	0.02	1580.67	1424.05	99.82	232
1.30	0.02	2.87	2.65	0.18	462

Integration Results for MSD1 TIC, MS File

RetTim	Width	Area	Height	Area%	MS (+)
1.12	0.03	463813.31	262580.09	100.00	232

Ret. Time: 1.12

<<<< POSITIVE SPECTRA >>>>

ES-API Positive

