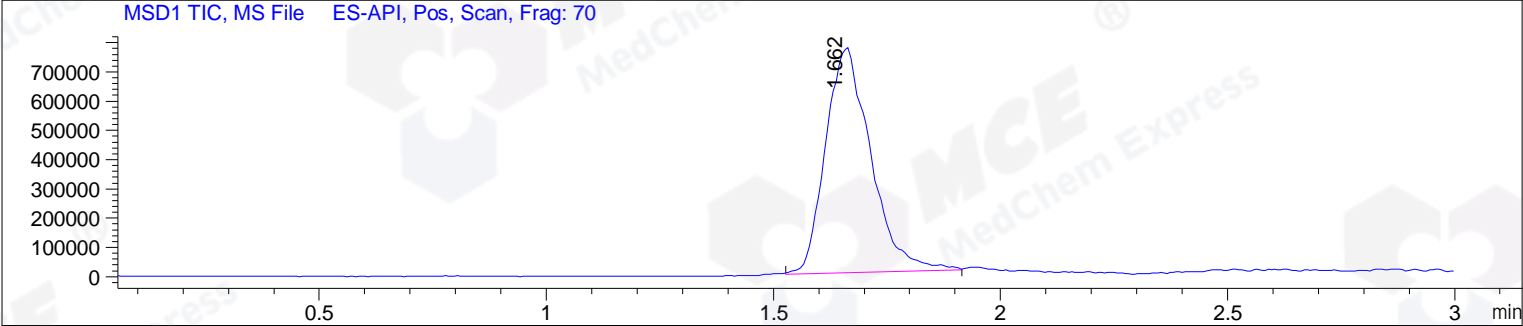
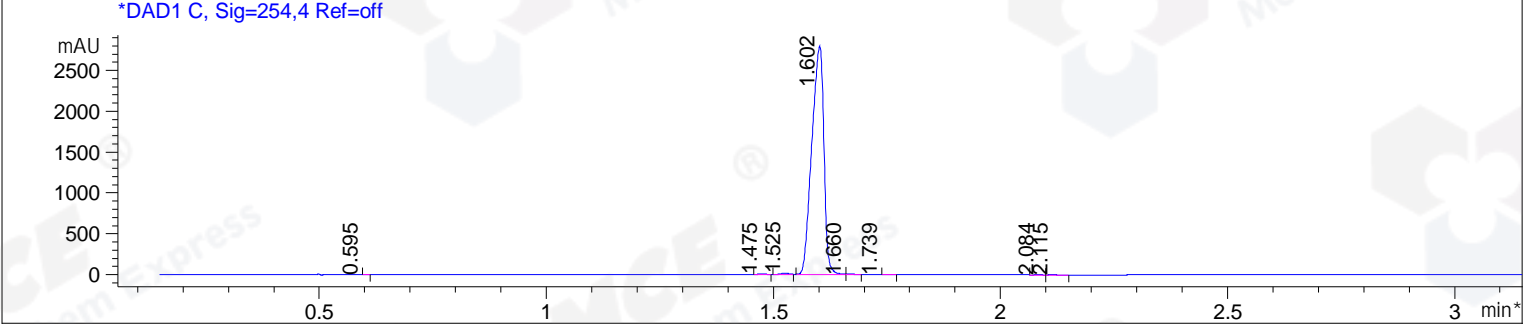
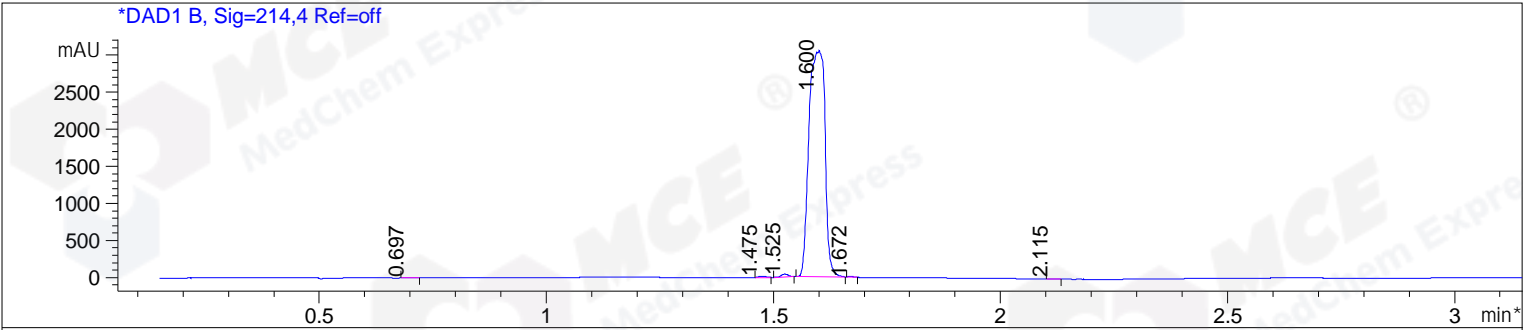


File D:\CHEM32\1\DATA\HEC\LQQ4191-007-1.D Tgt Mass (EZX):  
 Injection Date : 19 Apr 17 3:38 pm +0800 Seq. Line : 0  
 Sample Name : LQQ4191-007-1 Location : P2-F-03  
 Acq. Operator : GZZ\_718 Inj : 1  
 Spec. Reported : MS Integration Inj Volume : 1 ul  
 Acq. Method : D:\Chem32\1\METHODS\1-POS-3MIN.M  
 Analysis Method : D:\CHEM32\1\METHODS\1-POS-3MIN-PROSRSS.M  
 Catalog No : HY-100029 Batch#24379 Easy-Access Method: '1-POS-3MIN'  
 Method Info : Mobile Phase: A: water(0.01%TFA) B:ACN(0.01%TFA)  
 Gradient: 5% to 95%B within 1.3 min  
 Flow Rate :1.8ml/min  
 Column :SunFire C18, 4.6\*50mm,3.5um A-RP-186  
 Oven Temperature : 45C



Integration Results for DAD1 B, Sig=214,4 Ref=off

RetTim	Width	Area	Height	Area%	MS (+)
0.70	0.02	7.20	6.02	0.10	ND
1.47	0.02	21.11	19.22	0.28	394
1.53	0.02	42.73	39.64	0.57	394
1.60	0.04	7465.35	3030.79	98.92	396
1.67	0.01	6.15	7.48	0.08	396
2.12	0.02	4.62	4.50	0.06	396

Integration Results for DAD1 C, Sig=254,4 Ref=off

RetTim	Width	Area	Height	Area%	MS (+)
0.59	0.01	1.71	0.38	0.03	ND
1.47	0.02	7.65	6.79	0.15	394
1.53	0.02	16.53	14.55	0.32	394
1.60	0.03	5154.70	2812.63	99.32	396
1.66	0.02	5.88	3.43	0.11	396
1.74	0.02	1.03	0.03	0.02	396
2.08	0.02	0.79	0.78	0.02	396
2.12	0.02	1.64	1.46	0.03	396

Ret. Time: 1.66

<<<< POSITIVE SPECTRA >>>>

