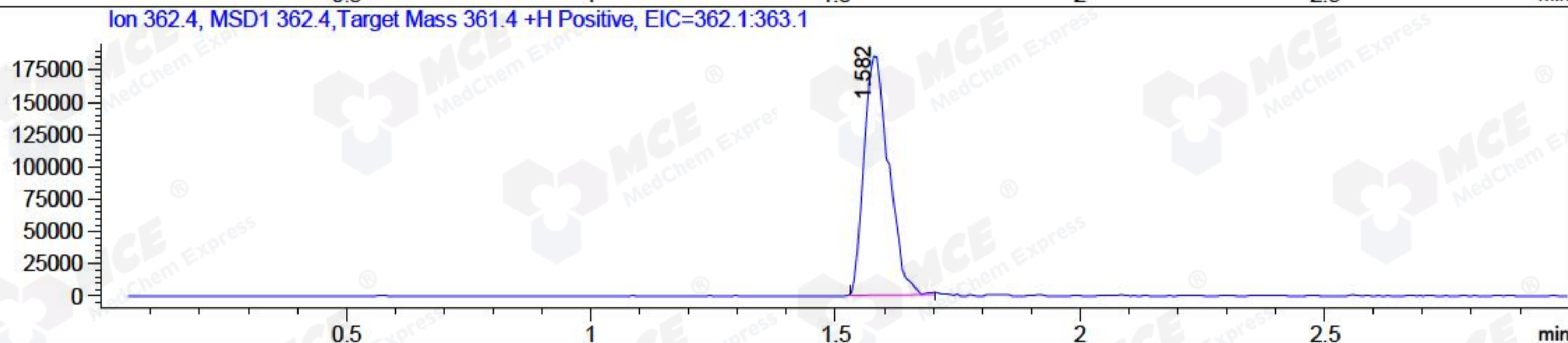
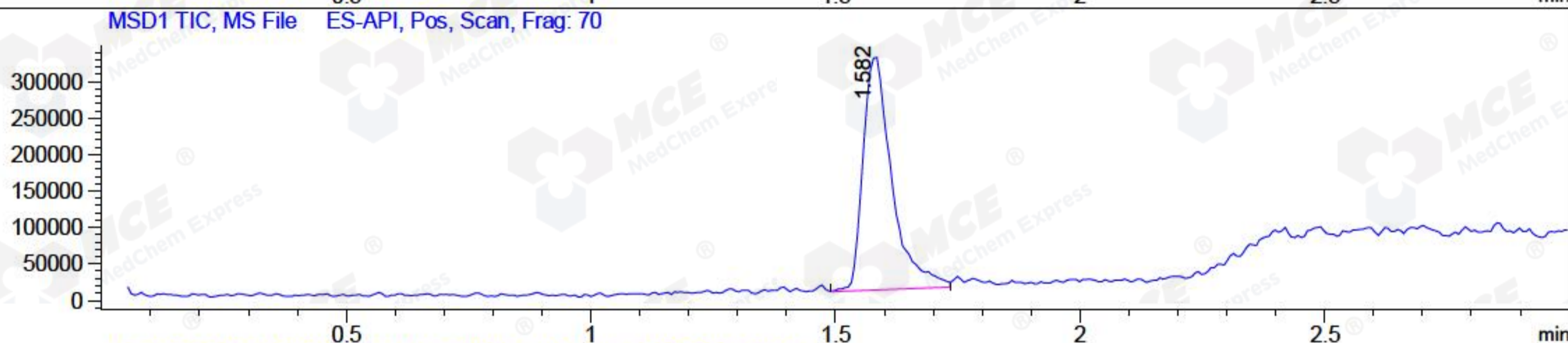
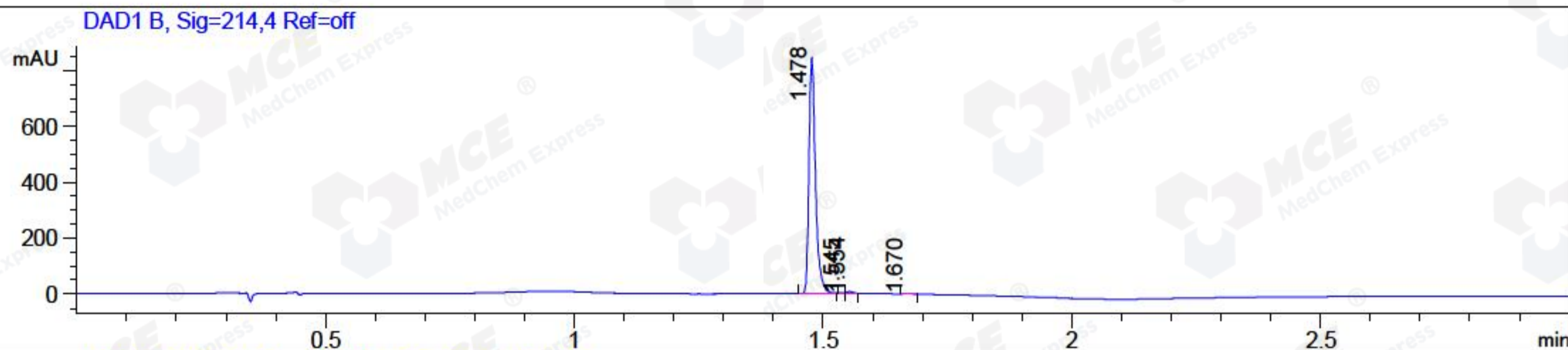


File ..\DATA\2018\20180630\294\CPK2018-628-02048.D Tgt Mass (CHM):
 Injection Date : 30 Jun 18 5:47 pm +0800 Seq. Line : 16
 Sample Name : CPK2018-628-02048 Location : P2-B-06
 Acq. Operator : LQ_1052 Inj : 1
 Spec. Reported : MS Integration Inj Volume : 1 ul
 Acq. Method : D:\Chem32\1\data\2018\20180630\294\1-POS-3MIN-1.M
 Analysis Method : D:\CHEM32\1\DATA\2018\20180630\294\1-POS-3MIN-1.M
 Catalog No : HY-10009 Batch#02048 A-RP-314
 Method Info : Mobile Phase: A: water(0.01%TFA) B:ACN(0.01%TFA)
 Gradient: 5% to 95%B within 1.3 min
 Flow Rate : 1.8ml/min
 Column :SunFire C18, 4.6*50mm,3.5um A-RP-314
 Oven Temperature : 45□



Integration Results for DAD1 B, Sig=214,4 Ref=off

RetTim	Width	Area	Height	Area%	MS (+)
1.48	0.02	770.30	844.77	98.83	141
1.54	0.01	1.23	1.78	0.16	362
1.55	0.01	5.14	6.09	0.66	362
1.67	0.02	2.77	2.60	0.36	384

Integration Results for MSD1 TIC, MS File

RetTim	Width	Area	Height	Area%	MS (+)
1.58	0.06	1310795.88	322316.13	100.00	362

Ret. Time: 1.58

<<<< POSITIVE SPECTRA >>>>

