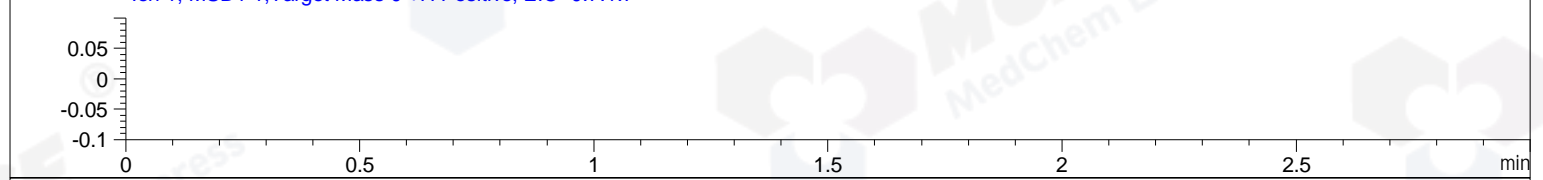
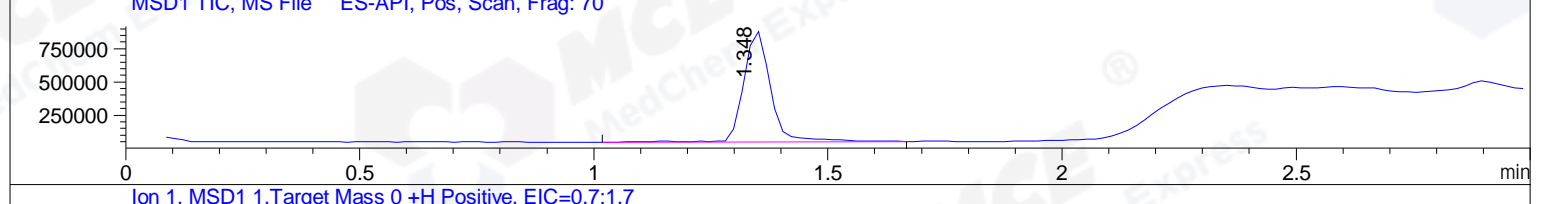
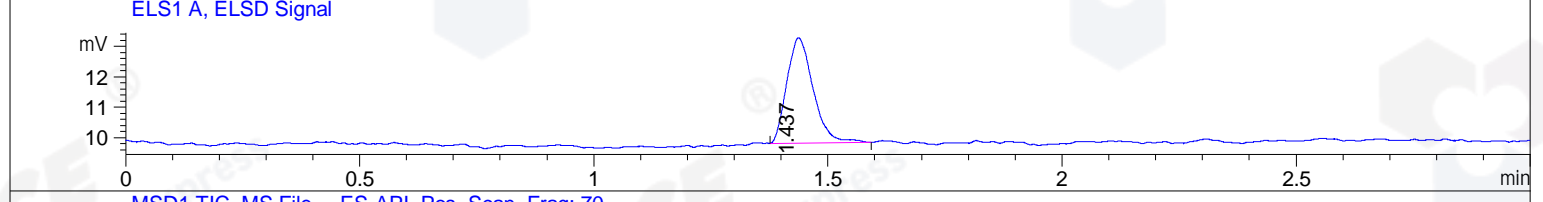
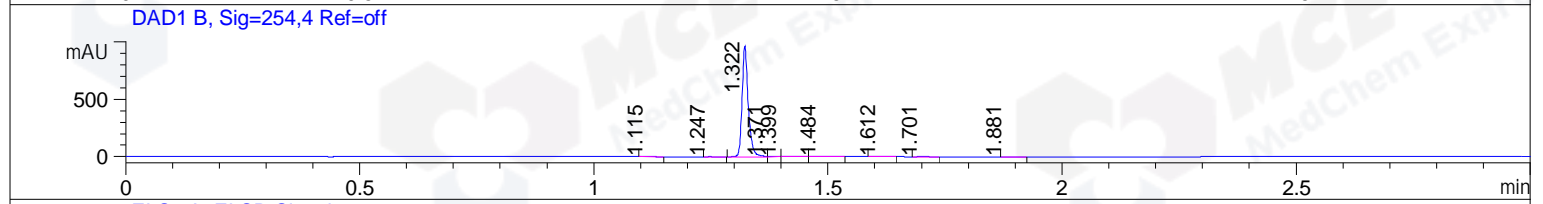
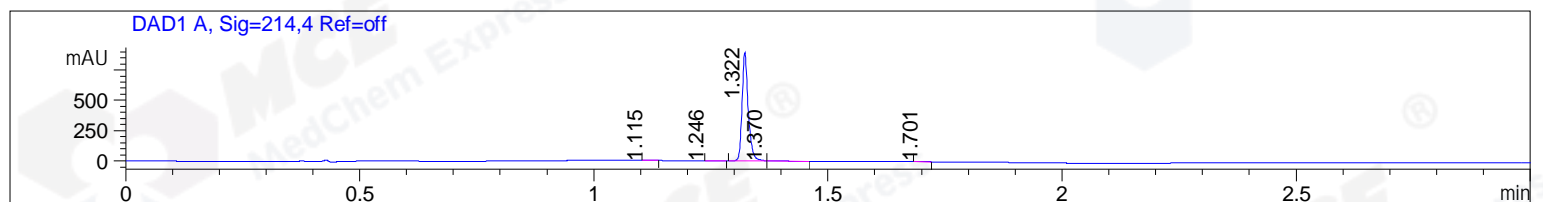


File ..\Data\20190228\20190228\CPK2019-228-20450.D Tgt Mass (CHM):  
 Injection Date : 28 Feb 19 6:32 pm +0800 Seq. Line : 111  
 Sample Name : CPK2019-228-20450 Location : P2-F-07  
 Acq. Operator : SYSTEM Inj : 1  
 Spec. Reported : MS Integration Inj Volume : 1 ul  
 Acq. Method : D:\LCMS03\Data\20190228\20190228\1-POS-3MIN.M  
 Analysis Method : D:\LCMS03\Data\20190228\20190228\1-POS-3MIN.M  
 Catalog No : HY-100115 Batch#20450  
 Method Info : Mobile Phase: A: water(0.01%TFA) B:ACN(0.01%TFA)  
 Gradient: 5% to 95%B within 1.3 min  
 Flow Rate :1.8ml/min  
 Column :SunFire C18, 4.6\*50mm,3.5um A-RP-392  
 Oven Temperature : 45C



Integration Results for DAD1 A, Sig=214,4 Ref=off

RetTim	Width	Area	Height	Area%	MS (+)
1.11	0.01	0.95	1.09	0.12	130
1.25	0.02	0.37	0.30	0.05	130
1.32	0.02	817.68	895.24	99.28	334
1.37	0.02	2.90	2.75	0.35	334
1.70	0.02	1.75	1.65	0.21	114

Integration Results for DAD1 B, Sig=254,4 Ref=off

RetTim	Width	Area	Height	Area%	MS (+)
1.12	0.01	0.93	1.00	0.10	130
1.25	0.01	0.36	0.38	0.04	130
1.32	0.02	879.52	965.15	99.30	334
1.37	0.01	2.35	2.96	0.26	334
1.40	0.02	0.66	0.50	0.07	334
1.48	0.02	0.36	0.27	0.04	114
1.61	0.02	0.29	0.22	0.03	114
1.70	0.02	0.99	0.97	0.11	114
1.88	0.02	0.29	0.21	0.03	114

## Integration Results for ELS1 A, ELSD Signal

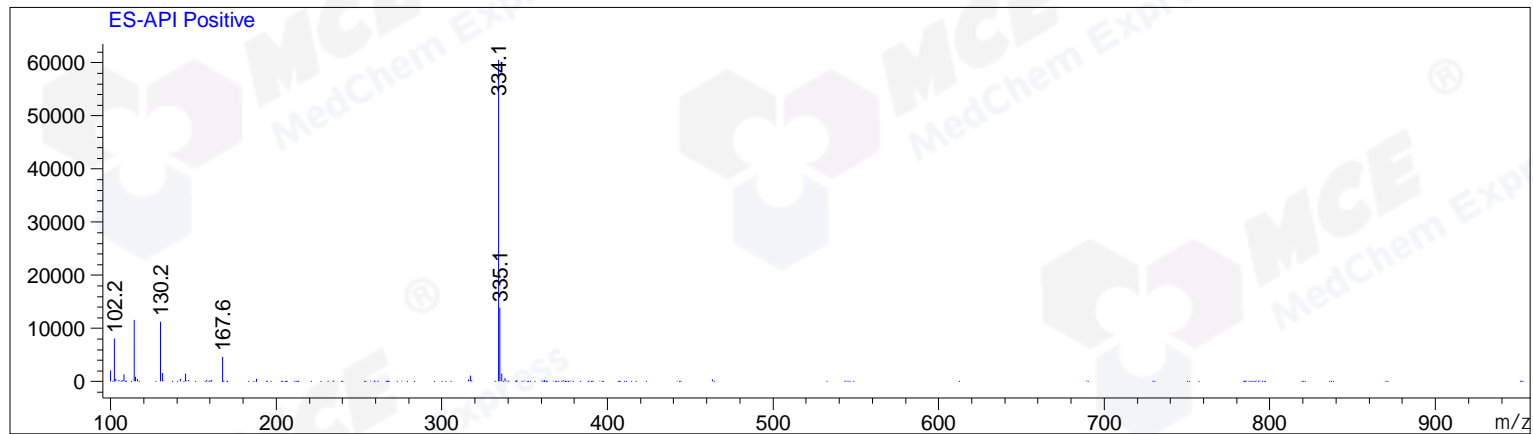
RetTim	Width	Area	Height	Area%	MS (+)
1.44	0.06	13.53	3.46	100.00	334

## Integration Results for MSD1 TIC, MS File

RetTim	Width	Area	Height	Area%	MS (+)
1.35	0.06	3356397.25	836337.75	100.00	334

Ret. Time: 1.35

<<<< POSITIVE SPECTRA >>>>



\*\*\* End of Report \*\*\*