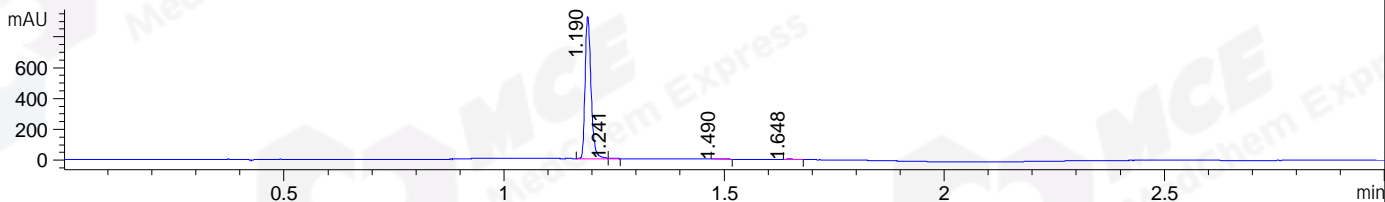
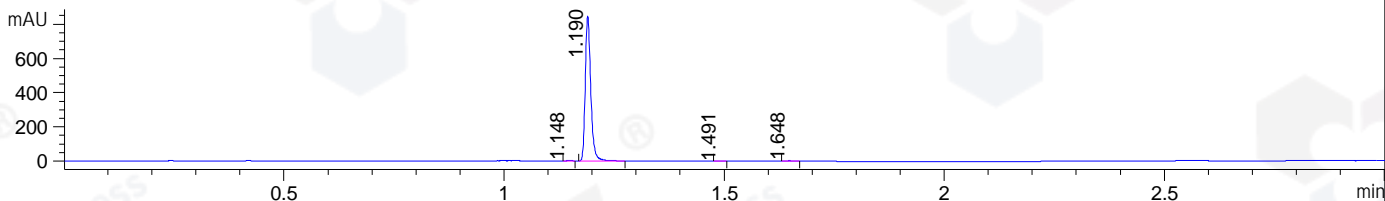


File ..DATA\2019\20190808\681\CPK2019-807-05523-.D Tgt Mass (CHM):  
Injection Date : 8 Aug 19 2:40 pm +0800 Seq. Line : 67  
Sample Name : CPK2019-807-05523 Location : P1-B-04  
Acq. Operator : ZJ\_1432 Inj : 1  
Spec. Reported : MS Integration Inj Volume : 0.5 ul  
Acq. Method : D:\Chem32\1\data\2019\20190808\681\1-POS-3MIN.M  
Analysis Method : D:\CHEM32\1\DATA\2019\20190808\681\1-POS-3MIN.M  
Catalog No : HY-10012 Batch#05523  
Method Info : Mobile Phase: A: water(0.01%TFA) B:ACN(0.01%TFA)  
Gradient: 5% to 95%B within 1.3 min  
Flow Rate :1.8ml/min  
Column :SunFire C18, 4.6\*50mm,3.5um A-RP-433  
Oven Temperature : 45

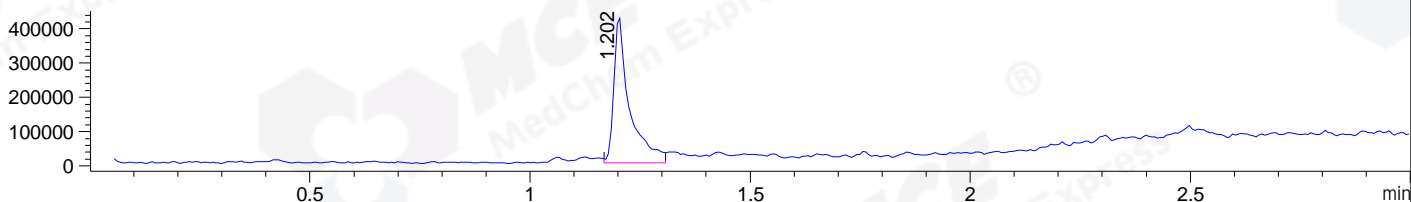
DAD1 B, Sig=214,4 Ref=off



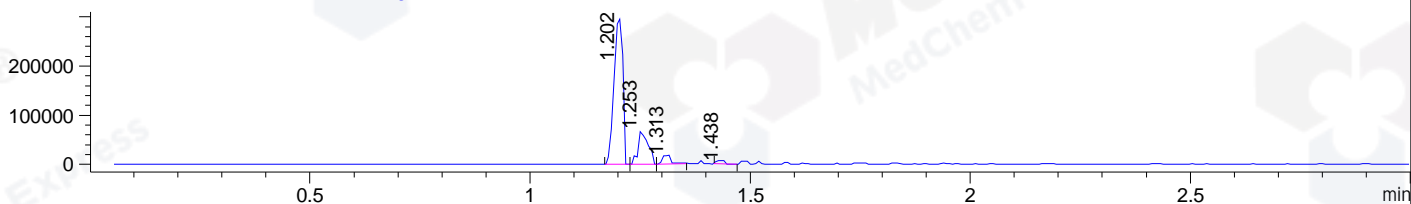
DAD1 C, Sig=254,4 Ref=off



MSD1 TIC, MS File ES-API, Pos, Scan, Frag: 70



Ion 372.4644, MSD1 372.4644, Target Mass 371.4644 +H Positive, EIC=372.16:373.16



Integration Results for DAD1 B, Sig=214,4 Ref=off

RetTim	Width	Area	Height	Area%	MS (+)
1.19	0.02	858.06	921.71	99.05	372
1.24	0.02	3.68	3.90	0.42	372
1.49	0.01	1.11	1.46	0.13	372
1.65	0.02	3.48	2.81	0.40	372

Integration Results for DAD1 C, Sig=254,4 Ref=off

RetTim	Width	Area	Height	Area%	MS (+)
1.15	0.01	1.70	2.16	0.23	194
1.19	0.01	731.29	845.90	99.37	372
1.49	0.01	0.41	0.54	0.06	372
1.65	0.02	2.49	2.46	0.34	372

Integration Results for MSD1 TIC, MS File

RetTim	Width	Area	Height	Area%	MS (+)
1.20	0.03	1060882.13	430437.06	100.00	372

Ret. Time: 1.20

<<<< POSITIVE SPECTRA >>>>

ES-API Positive

