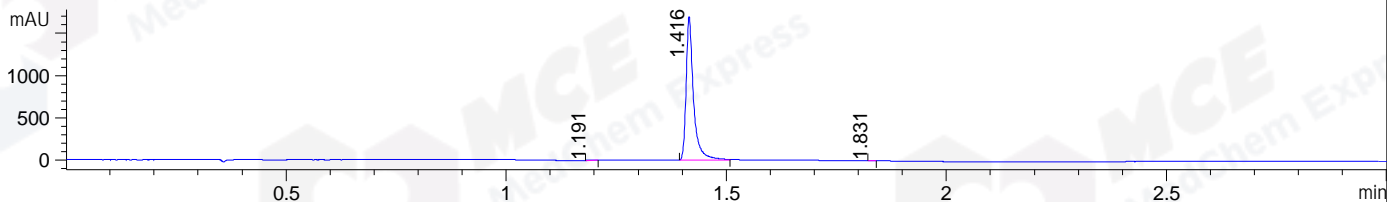
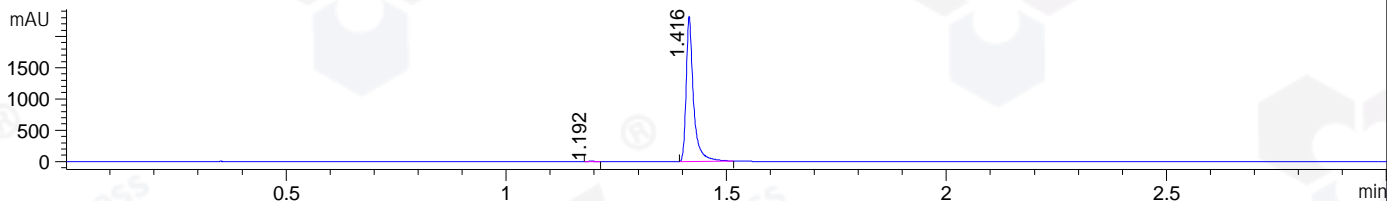


File ..\DATA\2019\20190304\544\CPK2019-301-20832.D Tgt Mass (CHM):
 Injection Date : 4 Mar 19 2:34 pm +0800 Seq. Line : 21
 Sample Name : CPK2019-301-20832 Location : P1-E-08
 Acq. Operator : LQ_1052 Inj : 1
 Spec. Reported : MS Integration Inj Volume : 2 ul
 Acq. Method : D:\Chem32\1\data\2019\20190304\544\1-POS-3MIN-1.M
 Analysis Method : D:\CHEM32\1\DATA\2019\20190304\544\1-POS-3MIN-1.M
 Catalog No : HY-100236 Batch#20832
 Method Info : Mobile Phase: A: water(0.01%TFA) B:ACN(0.01%TFA)
 Gradient: 5% to 95%B within 1.3 min
 Flow Rate :1.8ml/min
 Column :SunFire C18, 4.6*50mm,3.5um A-RP-314
 Oven Temperature : 45□

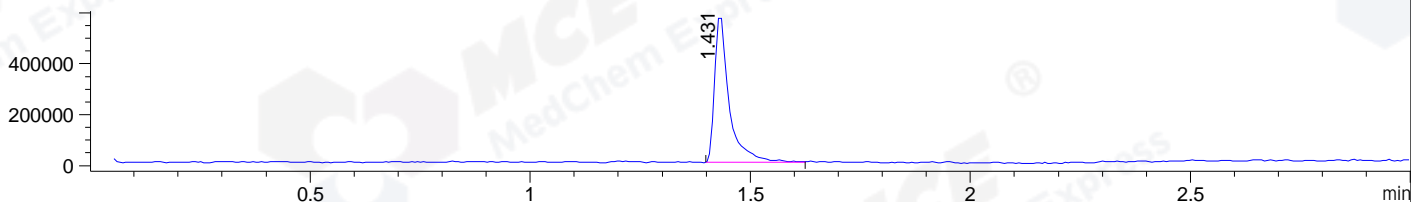
DAD1 B, Sig=214,4 Ref=off



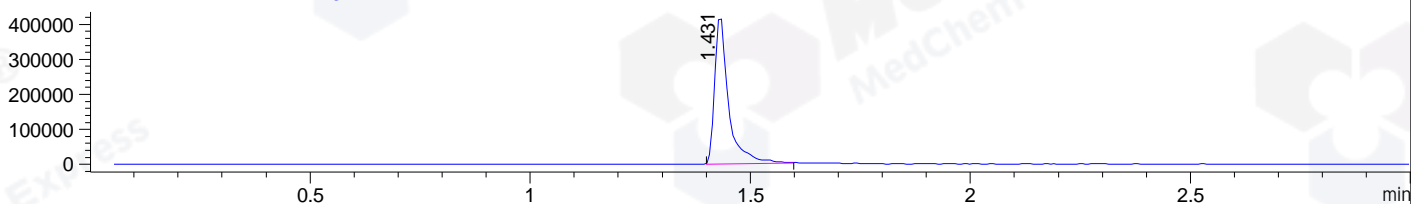
DAD1 C, Sig=254,4 Ref=off



MSD1 TIC, MS File ES-API, Pos, Scan, Frag: 70



Ion 312.3, MSD1 312.3, Target Mass 311.3 +H Positive, EIC=312:313



Integration Results for DAD1 B, Sig=214,4 Ref=off

RetTim	Width	Area	Height	Area%	MS (+)
1.19	0.01	1.70	1.98	0.09	226
1.42	0.02	1981.40	1696.76	99.88	312
1.83	0.01	0.63	0.97	0.03	312

Integration Results for DAD1 C, Sig=254,4 Ref=off

RetTim	Width	Area	Height	Area%	MS (+)
1.19	0.02	3.68	3.87	0.14	226
1.42	0.02	2694.51	2322.33	99.86	312

Integration Results for MSD1 TIC, MS File

RetTim	Width	Area	Height	Area%	MS (+)
1.43	0.03	1321026.88	581234.69	100.00	312

Ret. Time: 1.43

<<<< POSITIVE SPECTRA >>>>

ES-API Positive

