

File D:\CHEM32\1\DATA\2019\20190625\613\BLANK--2.D Tgt Mass (CHM):

Injection Date : 25 Jun 19 10:52 pm +0800

Seq. Line : 7

Sample Name : BLANK

Location : P1-F-07

Acq. Operator : ZJ_1432

Inj : 2

Spec. Reported : MS Integration

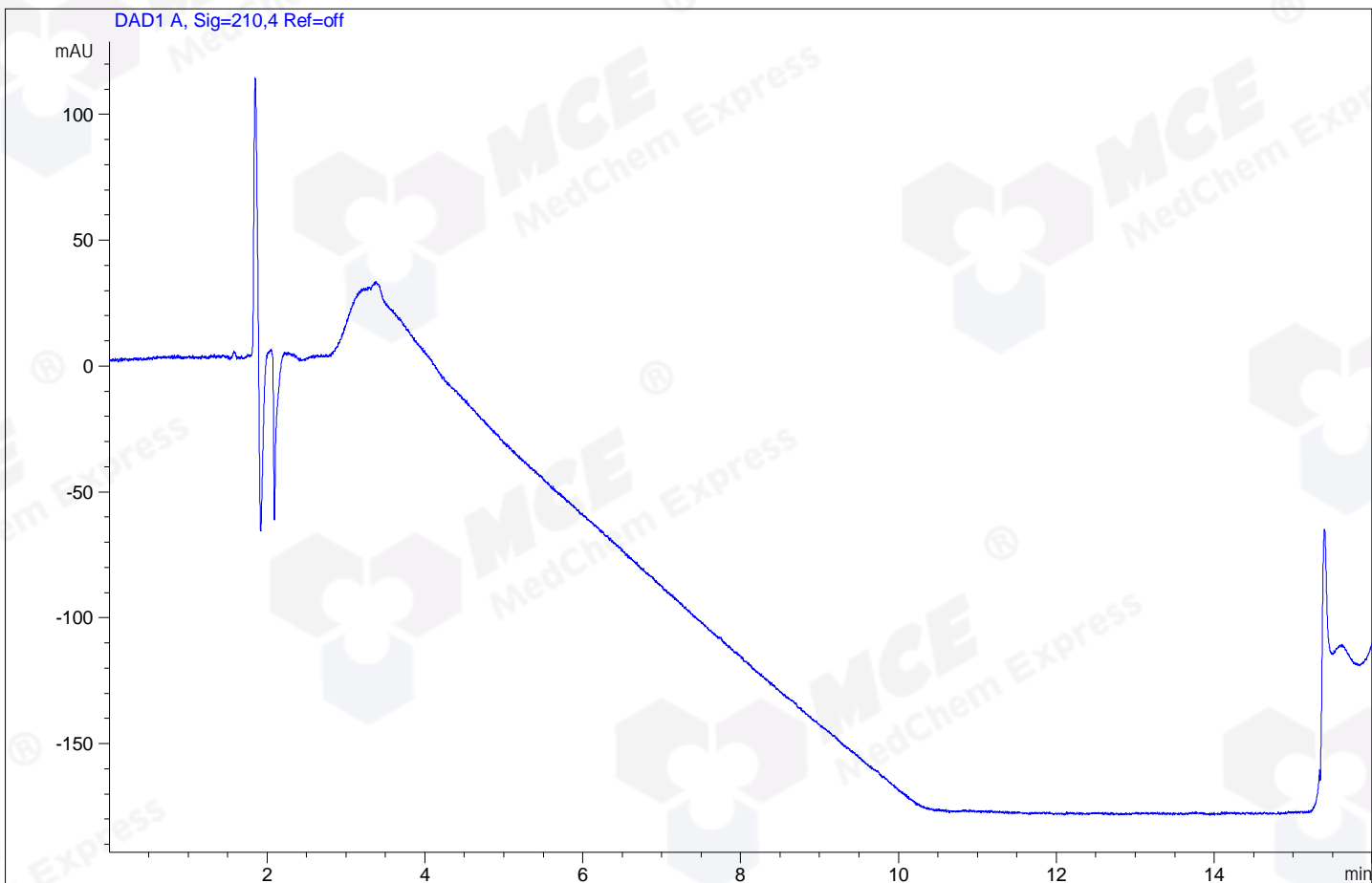
Inj Volume : 5 ul

Acq. Method : D:\Chem32\1\data\2019\20190625\613\5-80A,16MIN.210NM.AD.C2.M

Analysis Method : D:\CHEM32\1\DATA\2019\20190625\613\5-80A,16MIN.210NM.AD.C2.M

Catalog No : HY-100368A Batch#23602

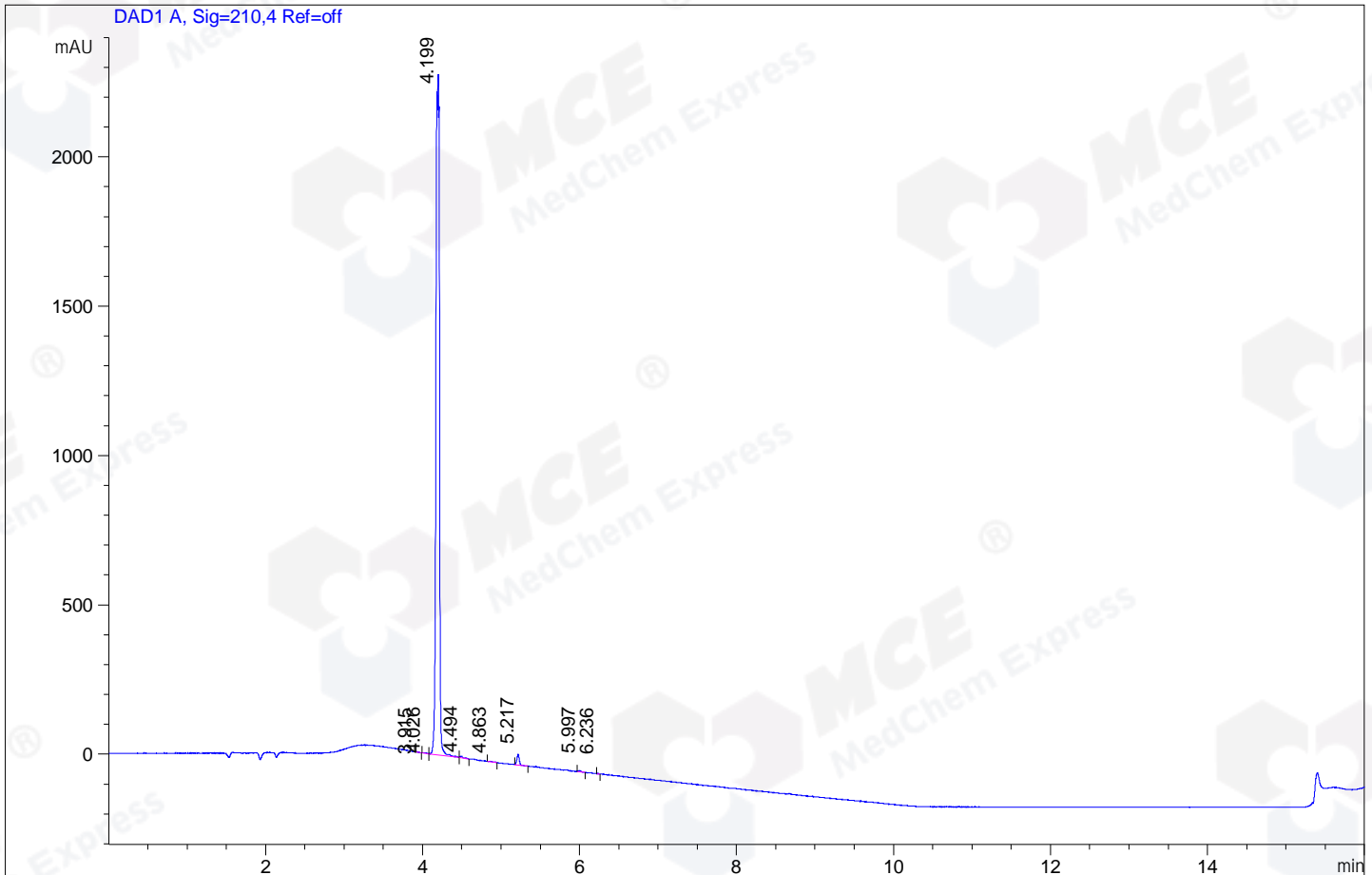
Method Info : 10-80A, (210NM)



Integration Results for DAD1 A, Sig=210,4 Ref=off

RetTim	Width	Area	Height	Area%
--------	-------	------	--------	-------

File ..\DATA\2019\20190625\613\CPK2019-624-23602.D Tgt Mass (CHM) :
Injection Date : 25 Jun 19 11:09 pm +0800 Seq. Line : 8
Sample Name : CPK2019-624-23602 Location : P1-F-03
Acq. Operator : ZJ_1432 Inj : 1
Spec. Reported : MS Integration Inj Volume : 5 ul
Acq. Method : D:\Chem32\1\data\2019\20190625\613\5-80A,16MIN.210NM.AD.C2.M
Analysis Method : D:\CHEM32\1\DATA\2019\20190625\613\5-80A,16MIN.210NM.AD.C2.M
Catalog No : HY-100368A Batch#23602
Method Info : 10-80A, (210NM)



Integration Results for DAD1 A, Sig=210,4 Ref=off

RetTim	Width	Area	Height	Area%
3.91	0.02	2.06	1.62	0.03
4.03	0.03	5.67	2.29	0.08
4.20	0.04	7192.44	2266.73	98.46
4.49	0.03	15.03	6.15	0.21
4.86	0.04	6.24	2.15	0.09
5.22	0.03	75.37	36.11	1.03
6.00	0.02	6.68	3.89	0.09
6.24	0.02	1.54	1.22	0.02