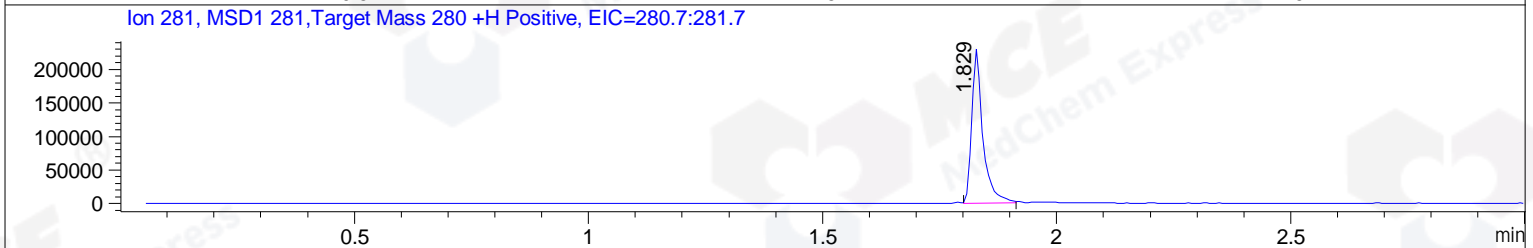
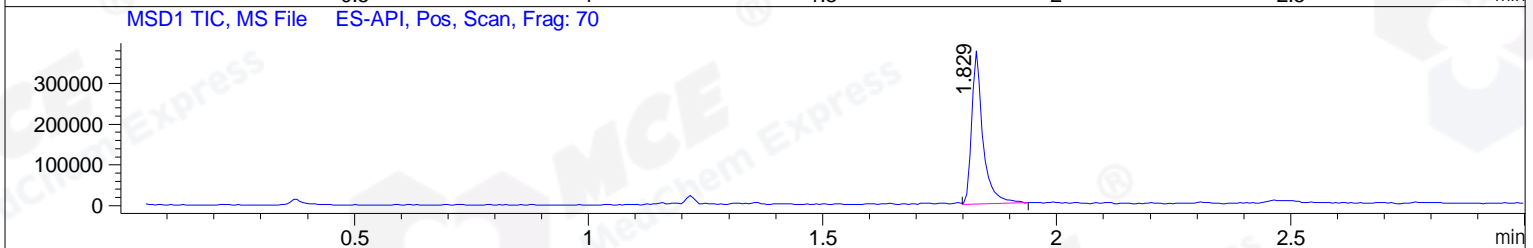
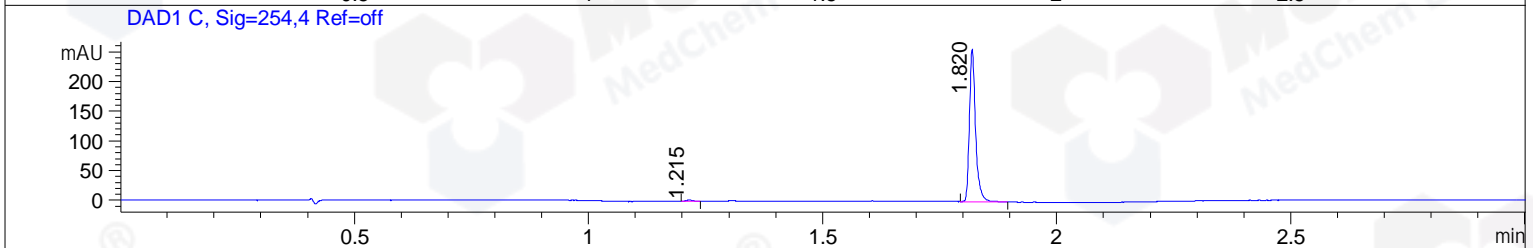
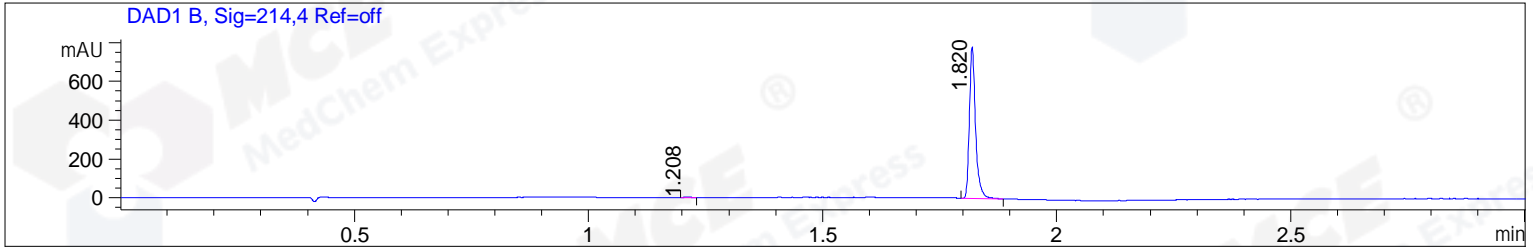


File ..\DATA\2020\20200414\925\BIZ2020-414-CXL3.D Tgt Mass (CHM):
 Injection Date : 15 Apr 20 2:06 pm +0800 Seq. Line : 65
 Sample Name : BIZ2020-414-CXL3 Location : PI-A-03
 Acq. Operator : ZJ_1432 Inj : 1
 Spec. Reported : MS Integration Inj Volume : 0.8 ul
 Acq. Method : D:\Chem32\1\data\2020\20200414\925\1-POS-3MIN.M
 Analysis Method : D:\CHEM32\1\DATA\2020\20200414\925\1-POS-3MIN.M
 Catalog No : HY-100524
 Method Info : Mobile Phase: A: water(0.01%TFA) B:ACN(0.01%TFA)
 Gradient: 5% to 95%B within 1.3 min
 Flow Rate :1.8ml/min
 Column :SunFire C18, 4.6*50mm,3.5um A-RP-607
 Oven Temperature : 45



Integration Results for DAD1 B, Sig=214,4 Ref=off

RetTim	Width	Area	Height	Area%	MS (+)
1.21	0.02	2.97	3.13	0.41	238
1.82	0.02	715.07	781.66	99.59	281

Integration Results for DAD1 C, Sig=254,4 Ref=off

RetTim	Width	Area	Height	Area%	MS (+)
1.22	0.01	1.96	2.28	0.83	238
1.82	0.02	235.36	257.33	99.17	281

Integration Results for MSD1 TIC, MS File

RetTim	Width	Area	Height	Area%	MS (+)
1.83	0.03	629629.25	377217.91	100.00	281

Ret. Time: 1.83

<<<< POSITIVE SPECTRA >>>>

ES-API Positive

