

File ..Data\20171205\20171205-2\BIZ2017-D05-WYQ5.D Tgt Mass (CHM):

Injection Date : 5 Dec 17 5:47 pm +0800 Seq. Line : 38

Sample Name : BIZ2017-D05-WYQ5 Location : P2-A-07

Acq. Operator : ZLJ_587 Inj : 1

Spec. Reported : MS Integration Inj Volume : 1 ul

Acq. Method : D:\LCMS03\Data\20171205\20171205-2\1-POS-3MIN.M

Analysis Method : D:\LCMS03\Data\20171205\20171205-2\1-POS-3MIN.M

Catalog No : HY-100639 Batch#27623

Method Info : Mobile Phase: A: water(0.01%TFA) B:ACN(0.01%TFA)

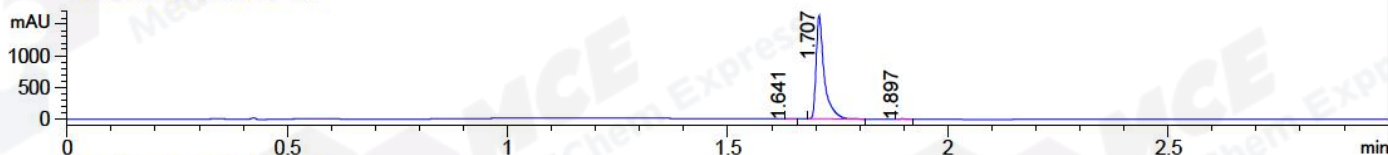
Gradient: 5% to 95%B within 1.3 min

Flow Rate :1.8ml/min

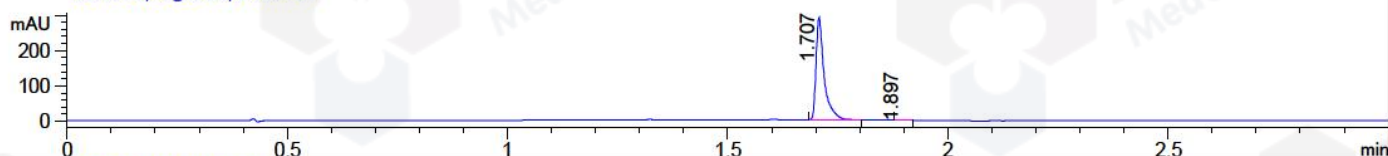
Column :SunFire C18, 4.6*50mm,3.5um A-RP-186

Oven Temperature : 45C

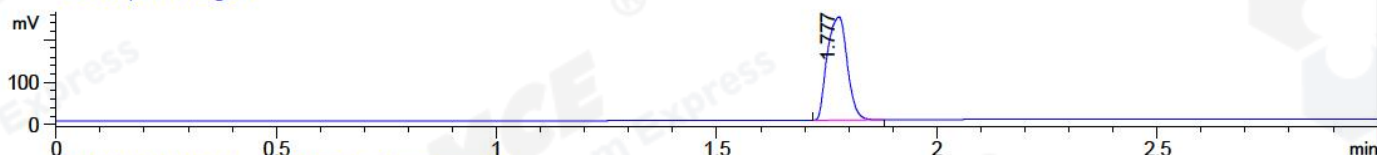
DAD1 A, Sig=214,4 Ref=off



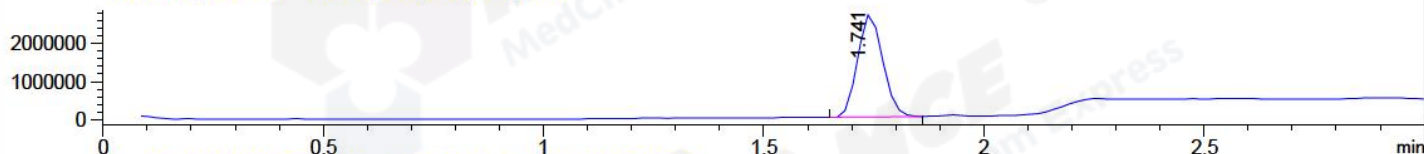
DAD1 B, Sig=254,4 Ref=off



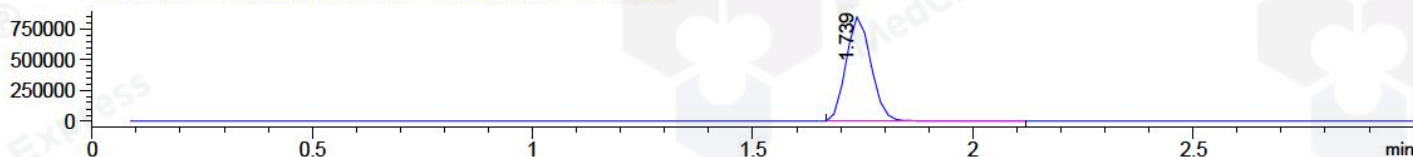
ELS1 A, ELSD Signal



MSD1 TIC, MS File ES-API, Pos, Scan, Frag: 70



Ion 419, MSD1 419, Target Mass 418 +H Positive, EIC=418.7:419.7



Integration Results for DAD1 A, Sig=214,4 Ref=off

RetTim	Width	Area	Height	Area%	MS (+)
1.64	0.02	0.92	0.87	0.04	233
1.71	0.02	2084.50	1628.09	99.69	419
1.90	0.02	5.60	4.95	0.27	233

Integration Results for DAD1 B, Sig=254,4 Ref=off

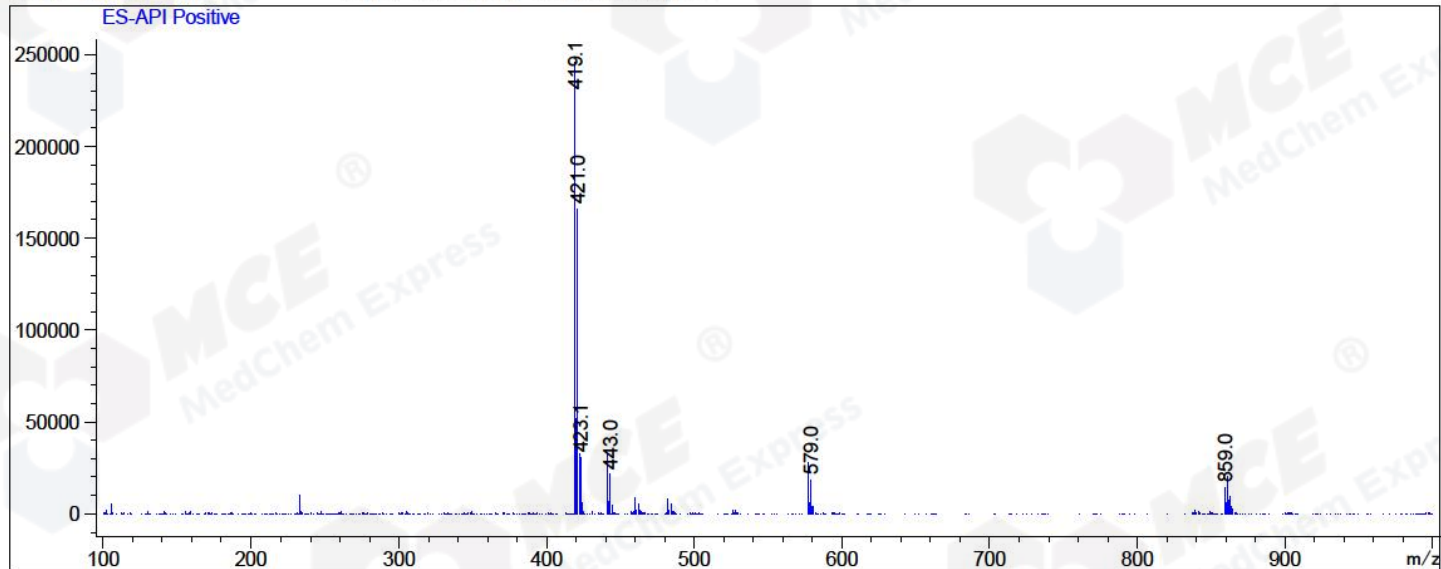
RetTim	Width	Area	Height	Area%	MS (+)
1.71	0.02	374.94	290.92	99.65	419
1.90	0.02	1.30	1.34	0.35	233

Integration Results for MSD1 TIC, MS File

RetTim	Width	Area	Height	Area%	MS (+)
1.74	0.06	10667483.00	2684906.25	100.00	419

Ret. Time: 1.74

<<<< POSITIVE SPECTRA >>>>



*** End of Report ***