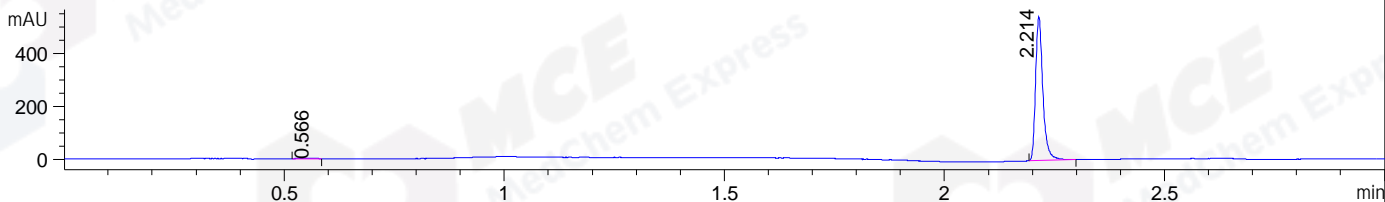
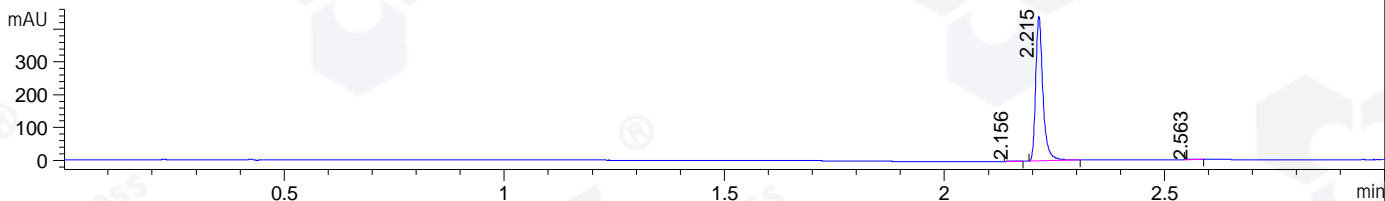


File ..DATA\2019\20190809\682\CPK2019-808-22678-.D Tgt Mass (CHM):
 Injection Date : 9 Aug 19 1:21 pm +0800 Seq. Line : 54
 Sample Name : CPK2019-808-22678 Location : P1-B-07
 Acq. Operator : ZJ_1432 Inj : 1
 Spec. Reported : MS Integration Inj Volume : 0.3 ul
 Acq. Method : D:\Chem32\1\data\2019\20190809\682\1-POS-3MIN.M
 Analysis Method : D:\CHEM32\1\DATA\2019\20190809\682\1-POS-3MIN.M
 Catalog No : HY-100792 Batch#22678
 Method Info : Mobile Phase: A: water(0.01%TFA) B:ACN(0.01%TFA)
 Gradient: 5% to 95%B within 1.3 min
 Flow Rate :1.8ml/min
 Column :SunFire C18, 4.6*50mm,3.5um A-RP-433
 Oven Temperature : 45

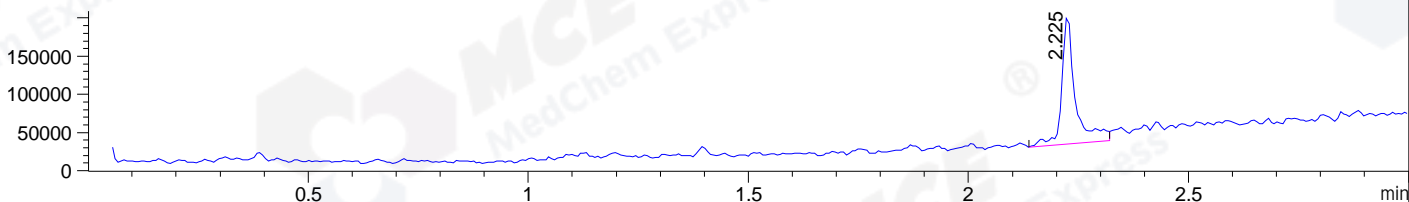
DAD1 B, Sig=214,4 Ref=off



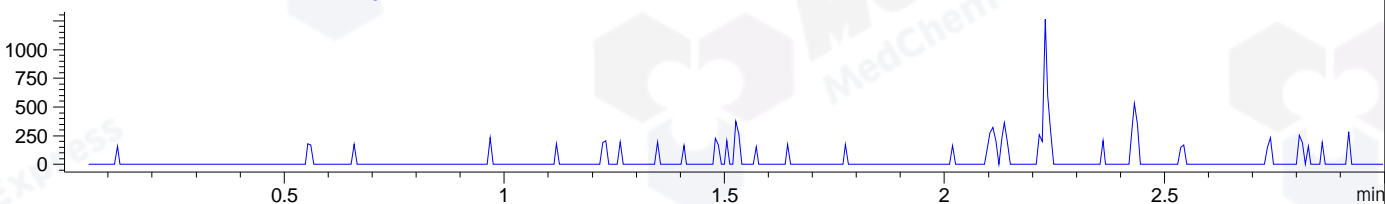
DAD1 C, Sig=254,4 Ref=off



MSD1 TIC, MS File ES-API, Pos, Scan, Frag: 70



Ion 296.3847, MSD1 296.3847, Target Mass 295.3847 +H Positive, EIC=296.08:297.08



Integration Results for DAD1 B, Sig=214,4 Ref=off

RetTim	Width	Area	Height	Area%	MS (+)
0.57	0.03	3.48	1.99	0.55	130
2.21	0.02	630.17	546.11	99.45	318

Integration Results for DAD1 C, Sig=254,4 Ref=off

RetTim	Width	Area	Height	Area%	MS (+)
2.16	0.02	1.28	1.07	0.25	159
2.21	0.02	502.53	440.84	99.49	318
2.56	0.02	1.32	1.13	0.26	159

Integration Results for MSD1 TIC, MS File

RetTim	Width	Area	Height	Area%	MS (+)
2.22	0.03	363603.88	169219.28	100.00	159

Ret. Time: 2.22

<<<< POSITIVE SPECTRA >>>>

