

File ..1\DATA\2019\20190318\556\BIZ2019-315-CXL2.D Tgt Mass (CHM):

Injection Date : 18 Mar 19 11:41 am +0800 Seq. Line : 24

Sample Name : BIZ2019-315-CXL2 Location : P2-D-02

Acq. Operator : LQ_1052 Inj : 1

Spec. Reported : MS Integration Inj Volume : 1 ul

Acq. Method : D:\Chem32\1\data\2019\20190318\556\1-POS-3MIN-1.M

Analysis Method : D:\CHEM32\1\DATA\2019\20190318\556\1-POS-3MIN-1.M

Catalog No : HY-100962 Batch# 39004-20190315

Method Info : Mobile Phase: A: water(0.01%TFA) B:ACN(0.01%TFA)

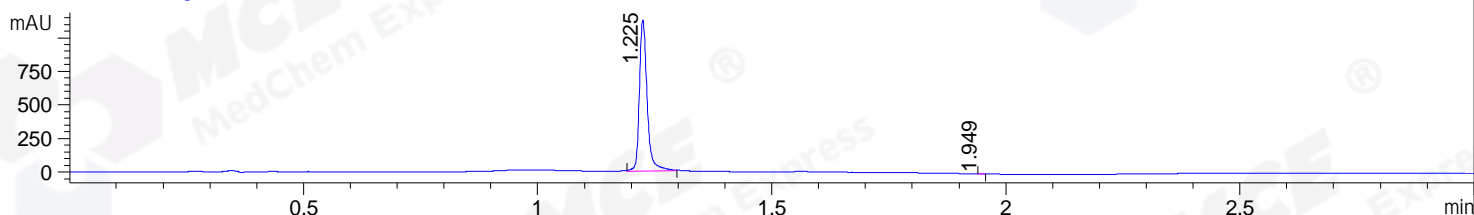
Gradient: 5% to 95%B within 1.3 min

Flow Rate :1.8ml/min

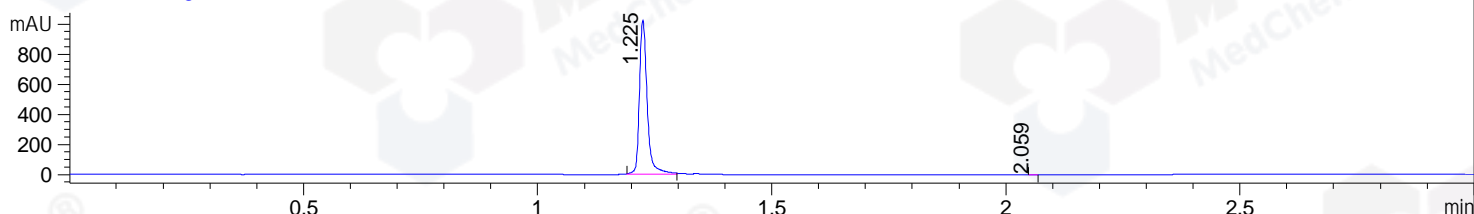
Column :SunFire C18, 4.6*50mm,3.5um A-RP-314

Oven Temperature : 45

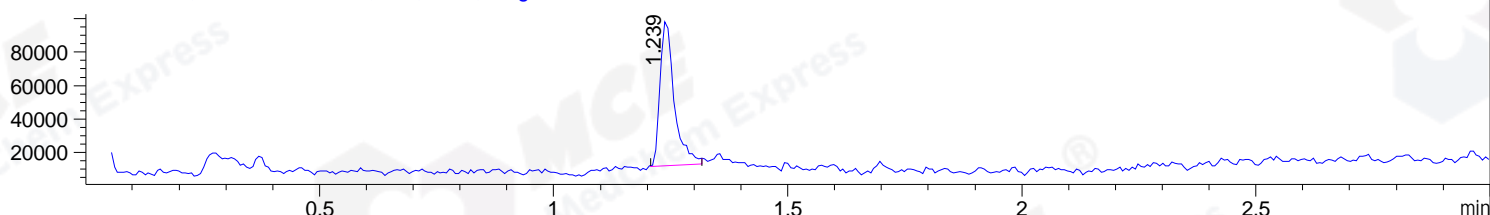
DAD1 B, Sig=214,4 Ref=off



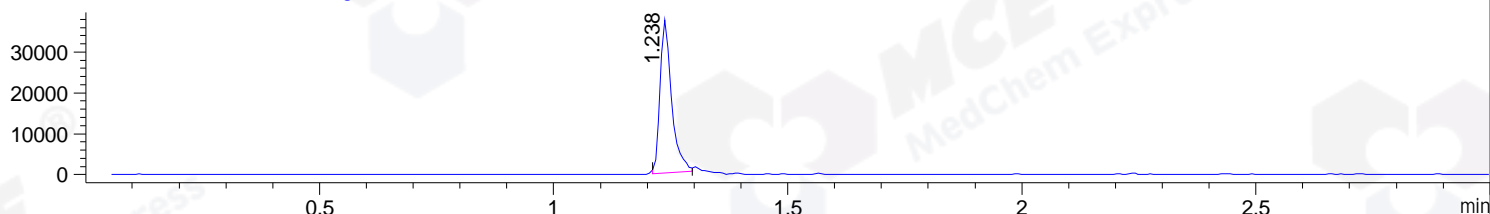
DAD1 C, Sig=254,4 Ref=off



MSD1 TIC, MS File ES-API, Pos, Scan, Frag: 70



Ion 205.1, MSD1 205.1, Target Mass 204.1 +H Positive, EIC=204.8:205.8



Integration Results for DAD1 B, Sig=214,4 Ref=off

RetTim	Width	Area	Height	Area%	MS (+)
1.22	0.02	1301.55	1127.09	99.98	205
1.95	0.01	0.20	0.34	0.02	ND

Integration Results for DAD1 C, Sig=254,4 Ref=off

RetTim	Width	Area	Height	Area%	MS (+)
1.22	0.02	1181.65	1025.37	99.99	205
2.06	0.01	0.08	0.11	0.01	175

Integration Results for MSD1 TIC, MS File

RetTim	Width	Area	Height	Area%	MS (+)
1.24	0.03	183645.41	87842.76	100.00	205

Ret. Time: 1.24

<<<< POSITIVE SPECTRA >>>>

ES-API Positive

