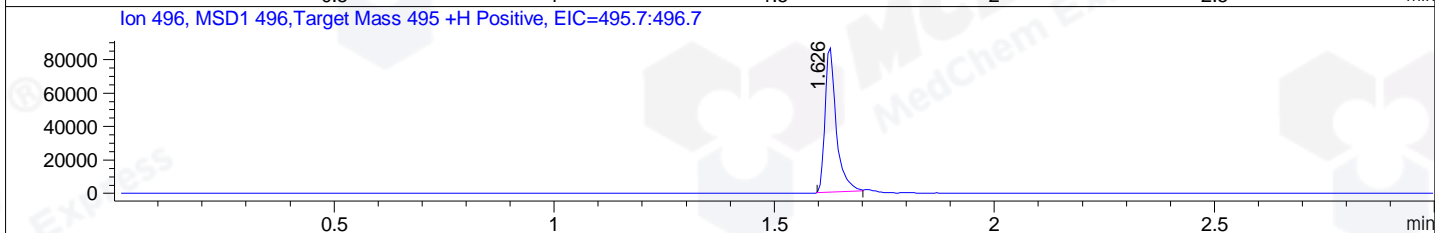
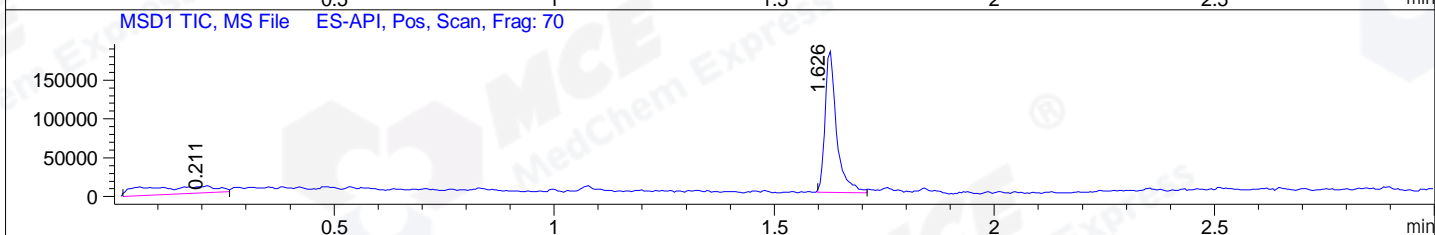
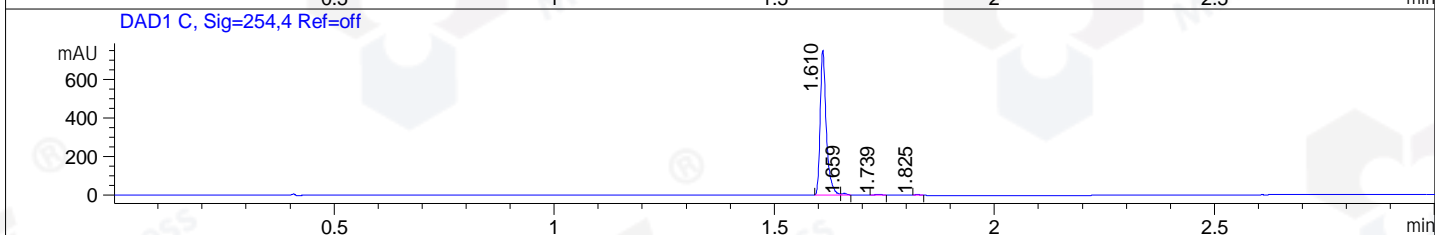
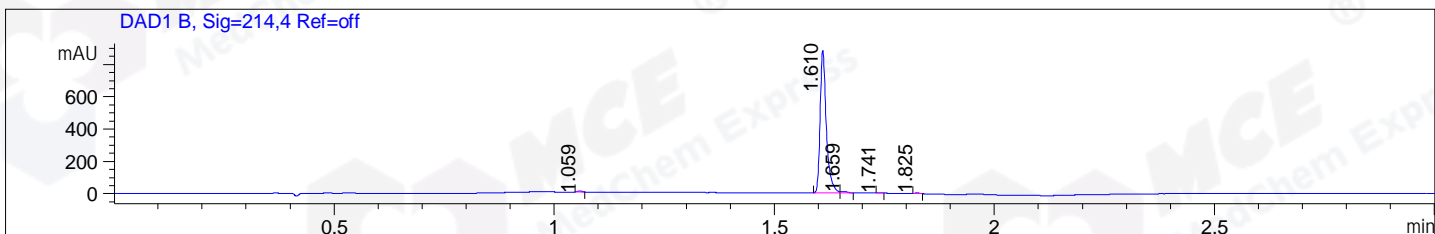


File ..DATA\2020\20200929\1120\CPK2020-928-27850.D Tgt Mass (CHM):
Injection Date : 29 Sep 20 1:46 pm +0800 Seq. Line : 52
Sample Name : CPK2020-928-27850 Location : P1-C-02
Acq. Operator : zyj_1547 Inj : 1
Spec. Reported : MS Integration Inj Volume : 1 ul
Acq. Method : D:\Chem32\1\data\2020\20200929\1120\1-POS-3MIN.M
Analysis Method : D:\CHEM32\1\DATA\2020\20200929\1120\1-POS-3MIN.M
Catalog No : HY-101567
Method Info : Mobile Phase: A: water(0.01%TFA) B:ACN(0.01%TFA)
Gradient: 5% to 95%B within 1.3 min
Flow Rate :1.8ml/min
Column :SunFire C18, 4.6*50mm,3.5um A-RP-624



Integration Results for DAD1 B, Sig=214,4 Ref=off

| RetTim | Width | Area | Height | Area% | MS (+) |
|--------|-------|--------|--------|-------|--------|
| 1.06 | 0.01 | 3.84 | 5.31 | 0.44 | 157 |
| 1.61 | 0.02 | 865.72 | 882.55 | 98.09 | 496 |
| 1.66 | 0.02 | 8.75 | 9.02 | 0.99 | 496 |
| 1.74 | 0.01 | 1.10 | 1.87 | 0.12 | 157 |
| 1.82 | 0.01 | 3.20 | 4.17 | 0.36 | 510 |

Integration Results for DAD1 C, Sig=254,4 Ref=off

| RetTim | Width | Area | Height | Area% | MS (+) |
|--------|-------|--------|--------|-------|--------|
| 1.61 | 0.02 | 726.28 | 753.18 | 98.22 | 496 |
| 1.66 | 0.01 | 6.72 | 7.58 | 0.91 | 496 |
| 1.74 | 0.02 | 3.25 | 2.85 | 0.44 | 157 |
| 1.82 | 0.01 | 3.16 | 3.88 | 0.43 | 510 |

Integration Results for MSD1 TIC, MS File

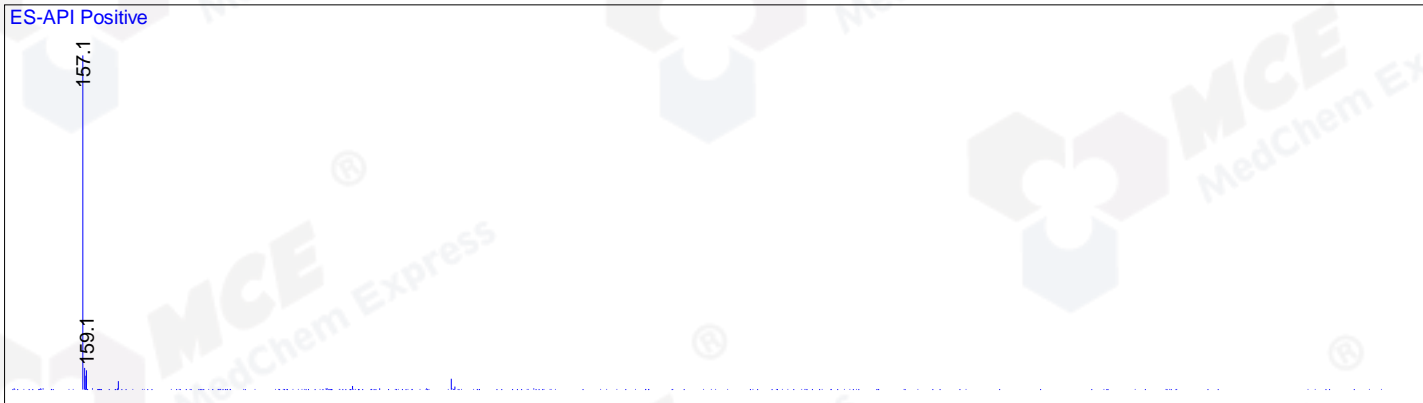
| RetTim | Width | Area | Height | Area% | MS (+) |
|--------|-------|------|--------|-------|--------|
|--------|-------|------|--------|-------|--------|

| | | | | | |
|------|------|-----------|-----------|-------|-----|
| 0.21 | 0.16 | 117006.10 | 9069.71 | 26.11 | 157 |
| 1.63 | 0.03 | 331177.28 | 182665.81 | 73.89 | 496 |

Ret. Time: 0.21

<<<< POSITIVE SPECTRA >>>>

ES-API Positive



Ret. Time: 1.63

ES-API Positive

