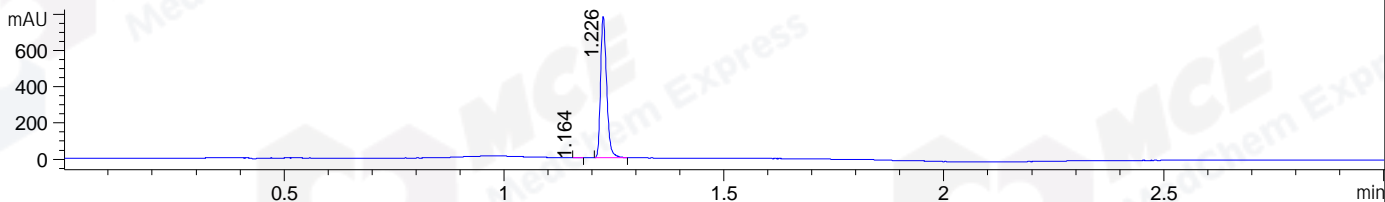
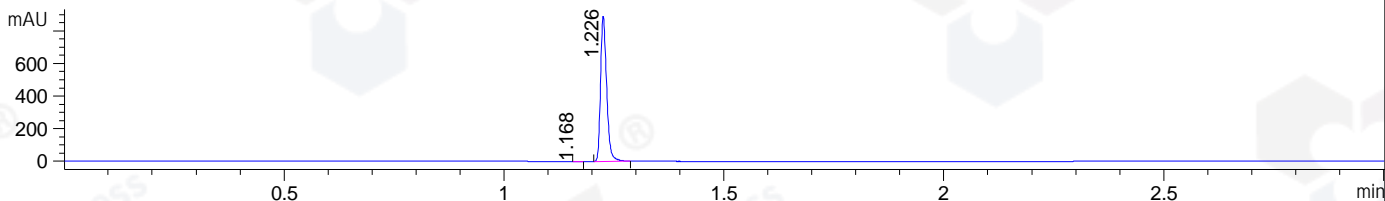


File ..\DATA\2019\20191120\761\CPK2019-N19-04163.D Tgt Mass (CHM):
 Injection Date : 20 Nov 19 1:02 pm +0800 Seq. Line : 54
 Sample Name : CPK2019-N19-04163 Location : P1-E-08
 Acq. Operator : ZJ_1432 Inj : 1
 Spec. Reported : MS Integration Inj Volume : 1 ul
 Acq. Method : D:\Chem32\1\data\2019\20191120\761\1-POS-3MIN.M
 Analysis Method : D:\CHEM32\1\DATA\2019\20191120\761\1-POS-3MIN.M
 Catalog No : HY-10158 Batch# 04163
 Method Info : Mobile Phase: A: water(0.01%TFA) B:ACN(0.01%TFA)
 Gradient: 5% to 95%B within 1.3 min
 Flow Rate :1.8ml/min
 Column :SunFire C18, 4.6*50mm,3.5um A-RP-433
 Oven Temperature : 45

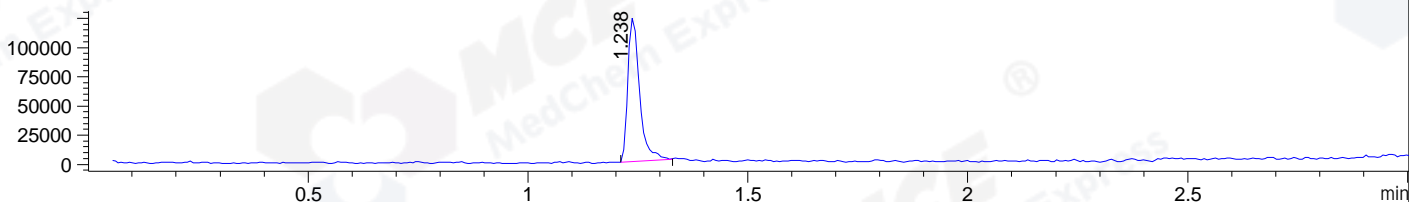
DAD1 B, Sig=214,4 Ref=off



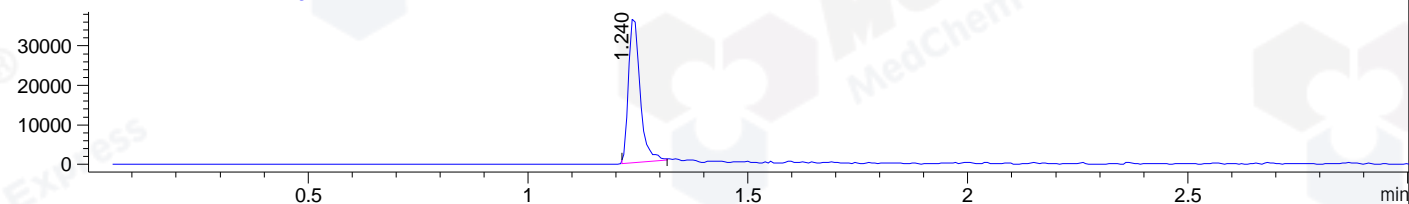
DAD1 C, Sig=254,4 Ref=off



MSD1 TIC, MS File ES-API, Pos, Scan, Frag: 70



Ion 530, MSD1 530, Target Mass 529 +H Positive, EIC=529.7:530.7



Integration Results for DAD1 B, Sig=214,4 Ref=off

RetTim	Width	Area	Height	Area%	MS (+)
1.16	0.01	0.75	0.87	0.10	ND
1.23	0.02	750.87	784.04	99.90	530

Integration Results for DAD1 C, Sig=254,4 Ref=off

RetTim	Width	Area	Height	Area%	MS (+)
1.17	0.01	0.31	0.37	0.04	ND
1.23	0.02	851.91	891.40	99.96	530

Integration Results for MSD1 TIC, MS File

RetTim	Width	Area	Height	Area%	MS (+)
1.24	0.03	229225.38	123426.20	100.00	530

Ret. Time: 1.24

<<<< POSITIVE SPECTRA >>>>

ES-API Positive

