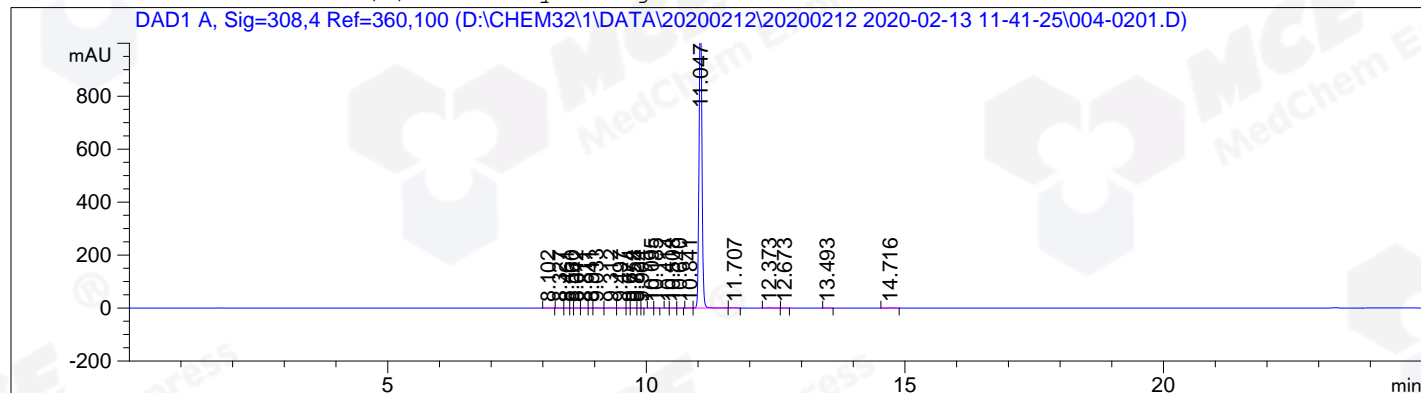




=====  
Acq. Operator : ZQQ Seq. Line : 2  
Acq. Instrument : HPLC-12 Location : Vial 4  
Injection Date : 2/13/2020 12:08:18 Inj : 1  
Inj Volume : 5.0 µl  
Acq. Method : D:\CHEM32\1\DATA\20200212\20200212 2020-02-13 11-41-25\LD779\_1-H01P02 (RP-HPLC)  
.M  
Last changed : 12/10/2019 11:05:47 by ZQQ  
Analysis Method : C:\CHEM32\1\METHODS\HM-419\_27-H01P04 (RP-HPLC) .M  
Last changed : 2/17/2020 14:54:18 by ZQQ  
(modified after loading)  
Catalog No : HY-10180 Batch# 59702  
A-RP-380  
=====

Additional Info : Peak(s) manually integrated



=====  
Area Percent Report  
=====

Sorted By : Signal  
Multiplier: : 1.0000  
Dilution: : 1.0000  
Use Multiplier & Dilution Factor with ISTDs

Signal 1: DAD1 A, Sig=308,4 Ref=360,100

Peak #	RetTime [min]	Type	Width [min]	Area [mAU*s]	Height [mAU]	Area %
1	8.102	MM	0.0787	2.70117e-1	5.72141e-2	6.084e-3
2	8.327	MF	0.0777	3.85251e-1	8.26514e-2	8.677e-3
3	8.461	MF	0.0649	2.10205e-1	5.40015e-2	4.734e-3
4	8.560	MF	0.0642	5.10978e-2	1.32716e-2	1.151e-3
5	8.642	MF	0.0720	2.63756e-1	6.10348e-2	5.941e-3
6	8.811	MF	0.0648	4.81039e-1	1.23767e-1	0.0108
7	8.941	MF	0.0595	2.53858e-1	7.11676e-2	5.718e-3
8	9.033	MF	0.0627	3.32085	8.82243e-1	0.0748
9	9.312	MF	0.0651	3.35218	8.58615e-1	0.0755
10	9.497	MF	0.0717	6.26625e-1	1.45724e-1	0.0141
11	9.674	MF	0.0462	3.81479e-2	1.37485e-2	8.592e-4
12	9.758	MF	0.0681	7.44663e-1	1.82160e-1	0.0168
13	9.824	MF	0.0455	1.79265e-1	6.56442e-2	4.038e-3
14	9.904	FM	0.0385	4.04180e-2	1.74837e-2	9.103e-4
15	10.095	MF	0.0634	7.44242e-1	1.95725e-1	0.0168
16	10.185	FM	0.0595	7.46381e-1	2.09072e-1	0.0168
17	10.414	MF	0.0596	2.66024e-1	7.44514e-2	5.992e-3
18	10.508	MF	0.0877	4.00821e-1	7.61639e-2	9.028e-3
19	10.640	FM	0.0784	2.77181e-1	5.89597e-2	6.243e-3

Peak #	RetTime [min]	Type	Width [min]	Area [mAU*s]	Height [mAU]	Area %
20	10.841	BV	0.0582	1.61351	4.45651e-1	0.0363
21	11.047	VB	0.0606	4414.56006	1155.46619	99.4293
22	11.707	BB	0.0679	3.52325	7.91460e-1	0.0794
23	12.373	BB	0.0619	3.25031	8.26214e-1	0.0732
24	12.673	MM	0.0654	4.87846e-1	1.24363e-1	0.0110
25	13.493	MM	0.0692	8.40136e-1	2.02287e-1	0.0189
26	14.716	BB	0.0683	2.96933	6.62100e-1	0.0669

Totals : 4439.89657 1161.76136

=====  
\*\*\* End of Report \*\*\*