

File ..Data\20171024\20171024-1\BIZ2017-O24-WYQ7.D Tgt Mass (CHM):

Injection Date : 24 Oct 17 12:40 pm +0800 Seq. Line : 41

Sample Name : BIZ2017-O24-WYQ7 Location : P1-D-10

Acq. Operator : SYSTEM Inj : 1

Spec. Reported : MS Integration Inj Volume : 1 ul

Acq. Method : D:\LCMS03\Data\20171024\20171024-1\1-POS-3MIN.M

Analysis Method : D:\LCMS03\Data\20171024\20171024-1\1-POS-3MIN.M

Catalog No : HY-101840 Batch#26821

Method Info : Mobile Phase: A: water(0.01%TFA) B:ACN(0.01%TFA)

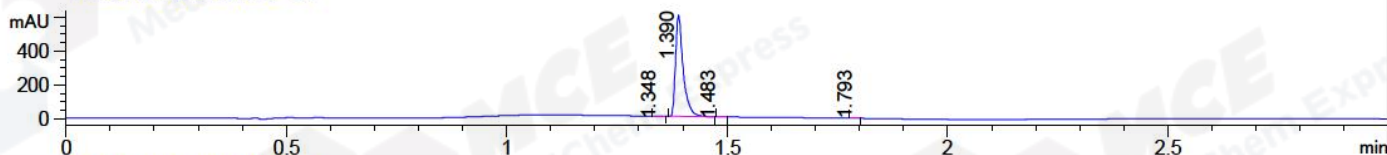
Gradient: 5% to 95%B within 1.3 min

Flow Rate :1.8ml/min

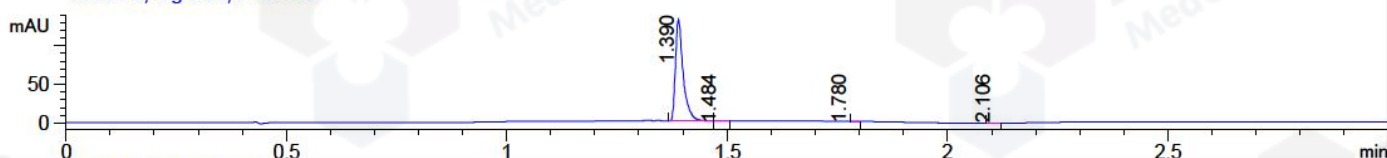
Column :SunFire C18, 4.6\*50mm,3.5um A-RP-186

Oven Temperature : 45C

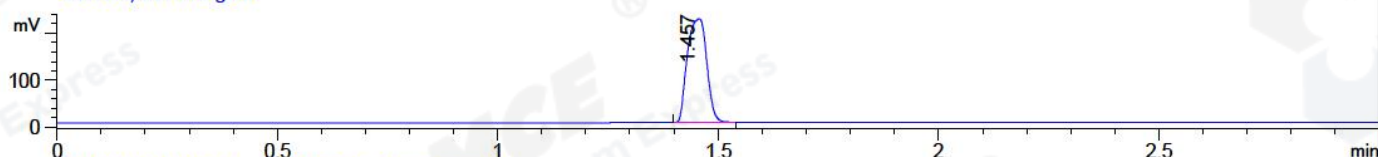
DAD1 A, Sig=214,4 Ref=off



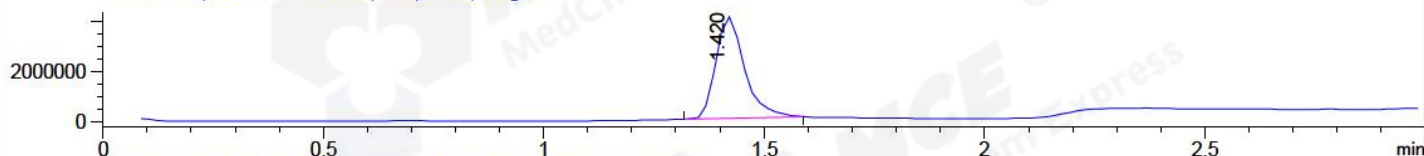
DAD1 B, Sig=254,4 Ref=off



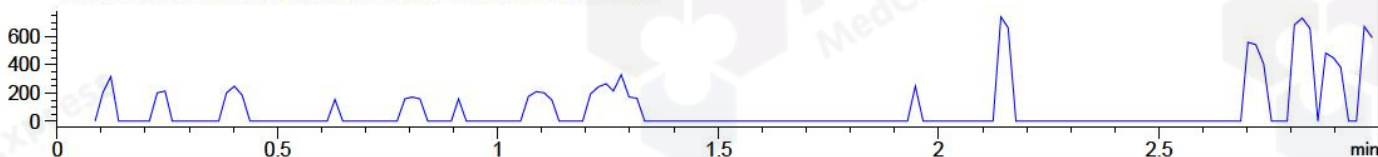
ELS1 A, ELSD Signal



MSD1 TIC, MS File ES-API, Pos, Scan, Frag: 70



Ion 299.1, MSD1 299.1, Target Mass 299.1 Positive, EIC=298.8:299.8



Integration Results for DAD1 A, Sig=214,4 Ref=off

RetTim	Width	Area	Height	Area%	MS (+)
1.35	0.02	0.85	0.67	0.12	300
1.39	0.02	722.02	595.31	99.73	300
1.48	0.01	0.57	0.69	0.08	300
1.79	0.01	0.55	0.67	0.08	300

Integration Results for DAD1 B, Sig=254,4 Ref=off

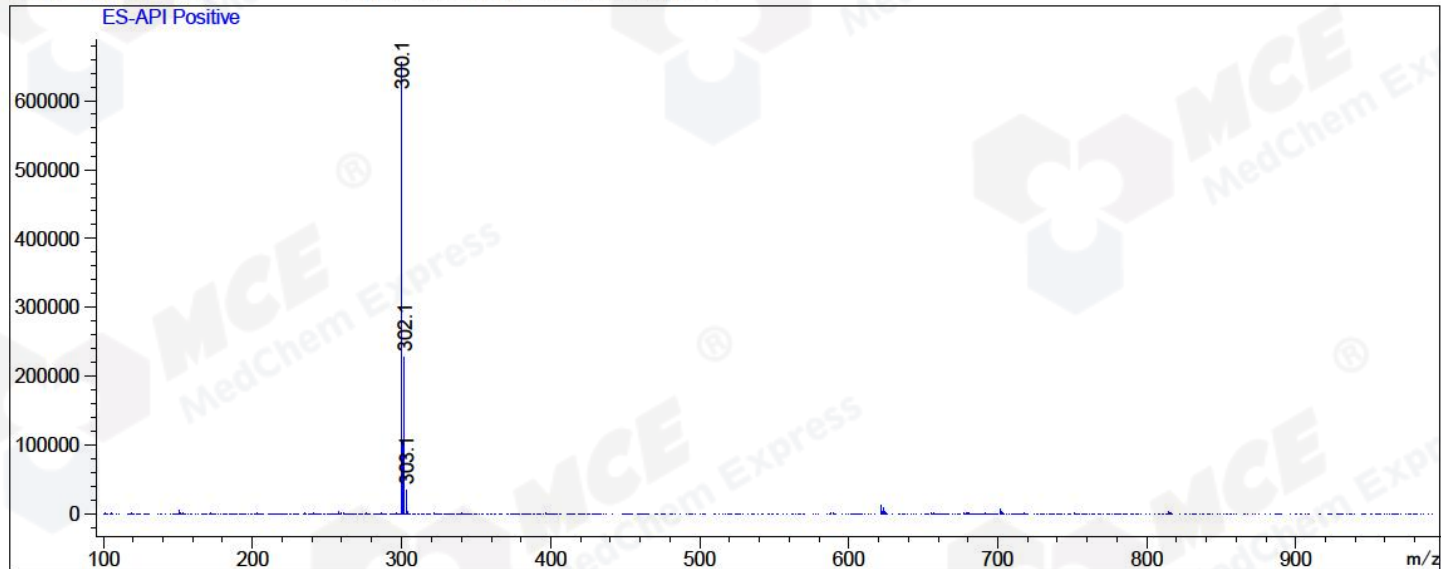
RetTim	Width	Area	Height	Area%	MS (+)
1.39	0.02	159.77	130.95	99.62	300
1.48	0.01	0.11	0.13	0.07	300
1.78	0.01	0.30	0.02	0.19	300
2.11	0.01	0.19	0.21	0.12	300

Integration Results for MSD1 TIC, MS File

RetTim	Width	Area	Height	Area%	MS (+)
1.42	0.07	18256074.00	4094971.25	100.00	300

Ret. Time: 1.42

<<<< POSITIVE SPECTRA >>>>



\*\*\* End of Report \*\*\*