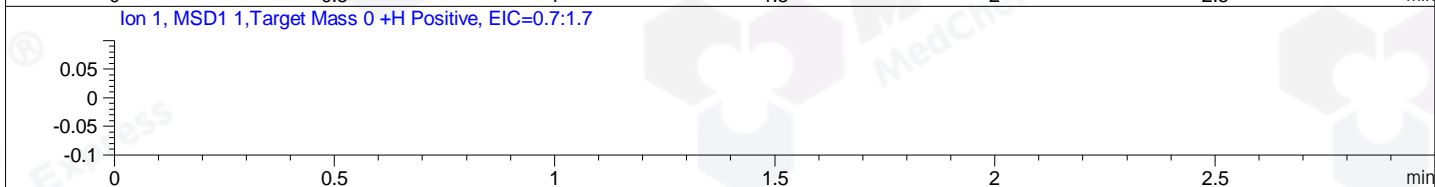
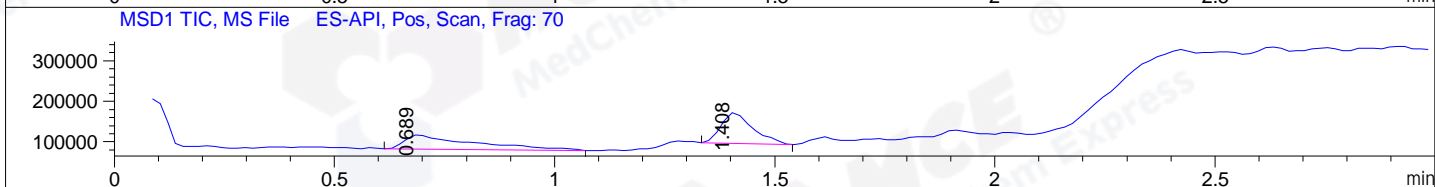
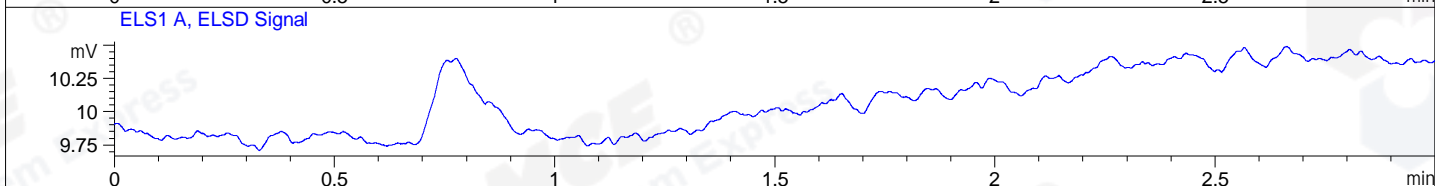
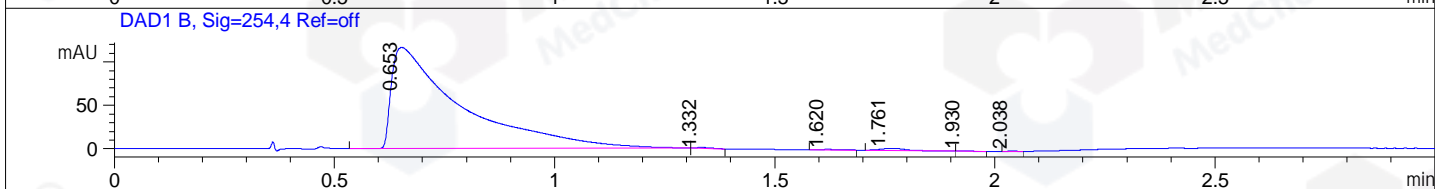
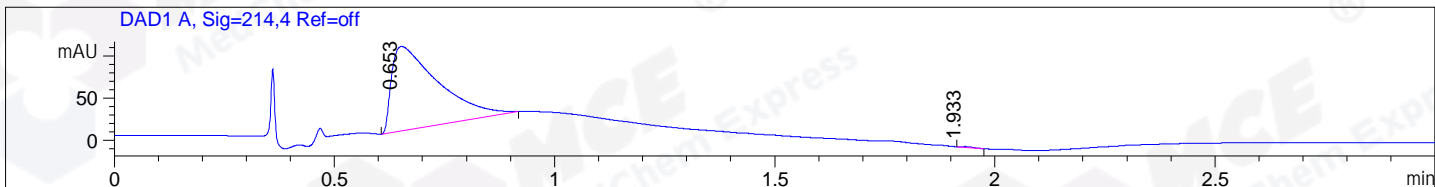


File ..a\2018\20180925\20180925\LJ2018-0921-0025.D Tgt Mass (CHM):
Injection Date : 25 Sep 18 11:24 am +0800 Seq. Line : 35
Sample Name : LJ2018-0921-0025 Location : P1-C-08
Acq. Operator : SYSTEM Inj : 1
Spec. Reported : MS Integration Inj Volume : 1 ul
Acq. Method : D:\LCMS03\Data\2018\20180925\20180925\1-POS-3MIN.M
Analysis Method : D:\LCMS03\Data\2018\20180925\20180925\1-POS-3MIN.M
Catalog No : HY-101981 Batch#45577
Method Info : Mobile Phase: A: water(0.01%TFA) B:ACN(0.01%TFA)
Gradient: 5% to 95%B within 1.3 min
Flow Rate :1.8ml/min
Column :SunFire C18, 4.6*50mm,3.5um A-RP-186
Oven Temperature : 45C



Integration Results for DAD1 A, Sig=214,4 Ref=off

RetTim	Width	Area	Height	Area%	MS (+)
0.65	0.11	734.78	100.18	99.77	325
1.93	0.03	1.69	0.91	0.23	233

Integration Results for DAD1 B, Sig=254,4 Ref=off

RetTim	Width	Area	Height	Area%	MS (+)
0.65	0.15	1271.96	116.20	98.97	325
1.33	0.03	2.32	1.02	0.18	702
1.62	0.03	1.36	0.72	0.11	233
1.76	0.06	8.42	2.16	0.65	233
1.93	0.03	0.66	0.40	0.05	233
2.04	0.02	0.52	0.41	0.04	233

Integration Results for ELS1 A, ELSD Signal

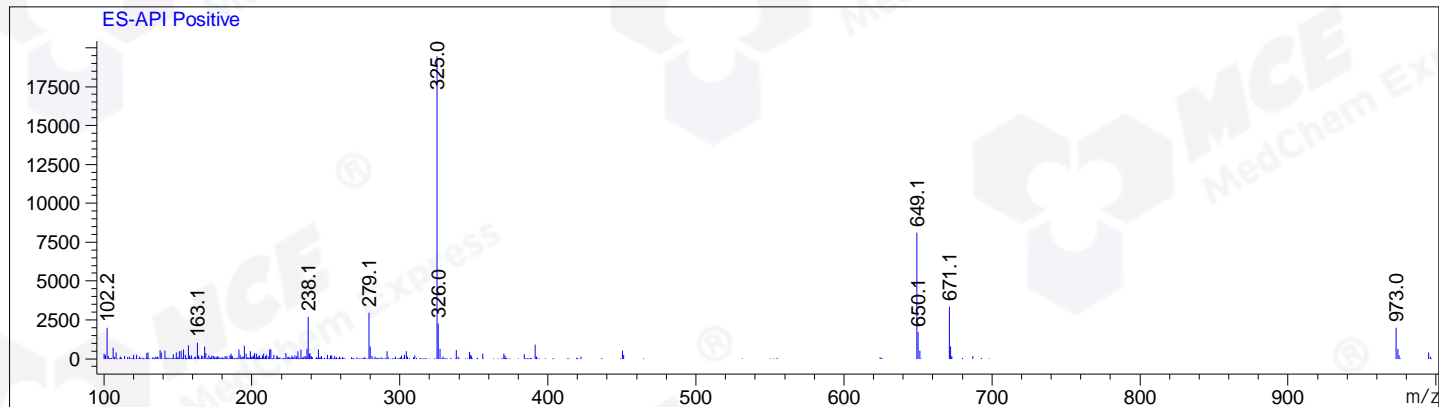
RetTim	Width	Area	Height	Area%	MS (+)
--------	-------	------	--------	-------	--------

Integration Results for MSD1 TIC, MS File

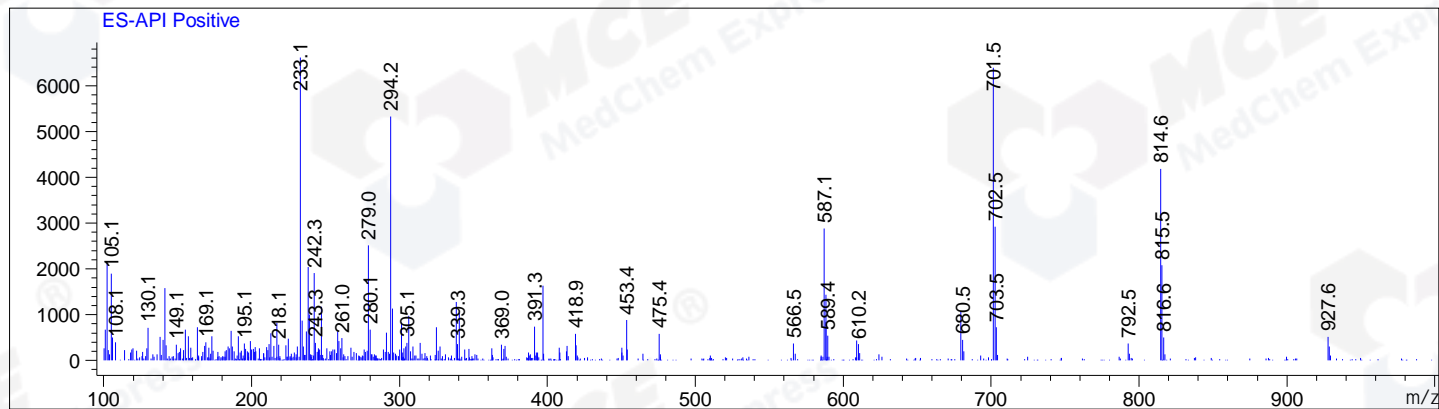
RetTim	Width	Area	Height	Area%	MS (+)
0.69	0.14	370219.13	34973.61	49.45	325
1.41	0.07	378403.88	76691.05	50.55	233

Ret. Time: 0.69

<<<< POSITIVE SPECTRA >>>>



Ret. Time: 1.41



*** End of Report ***