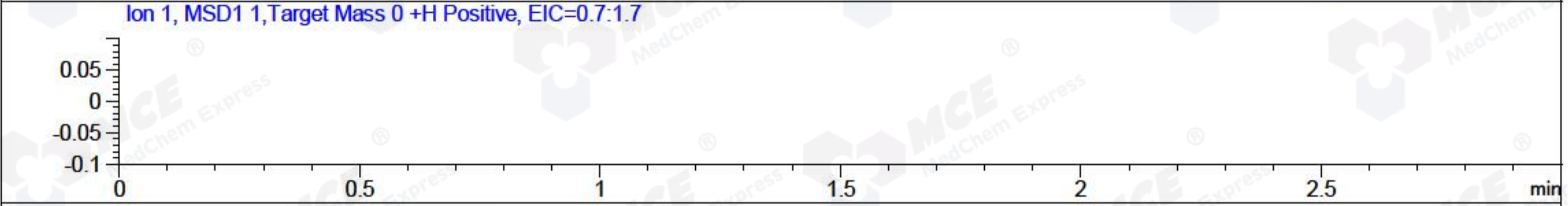
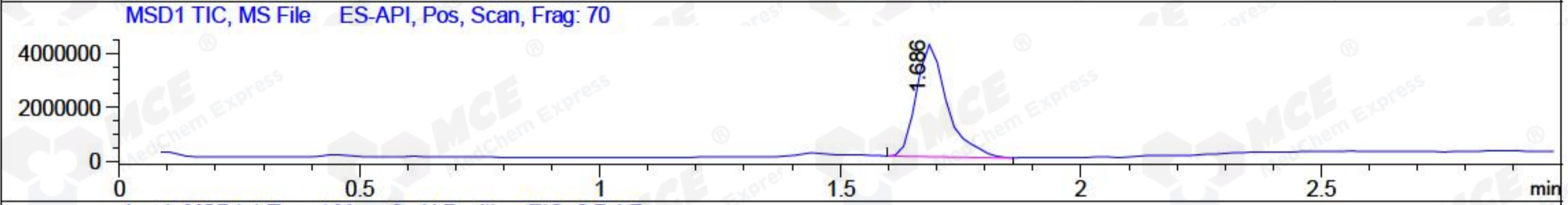
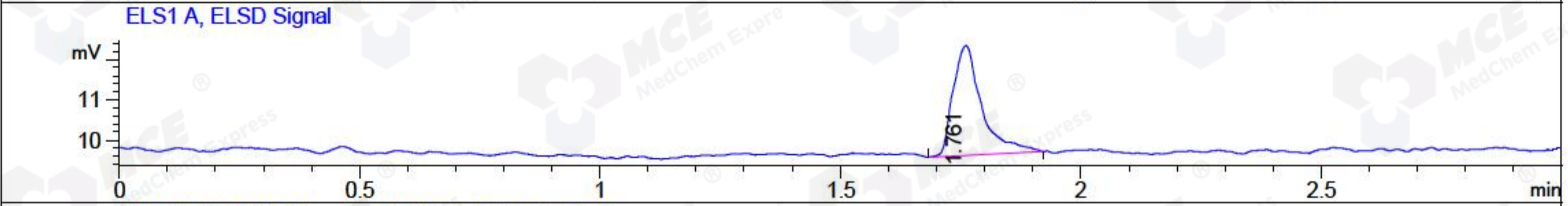
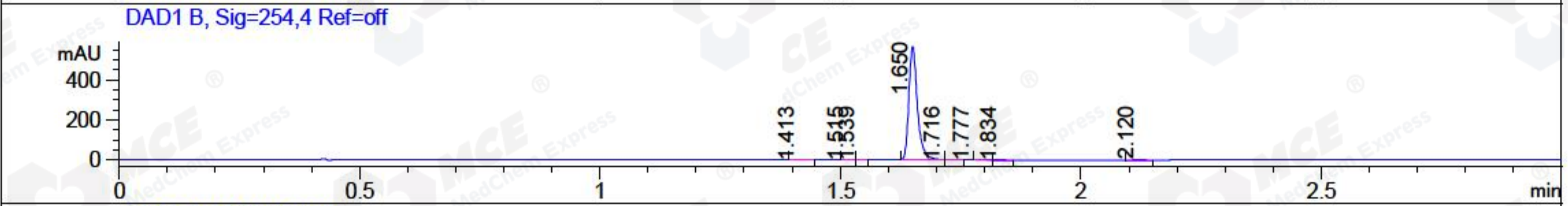
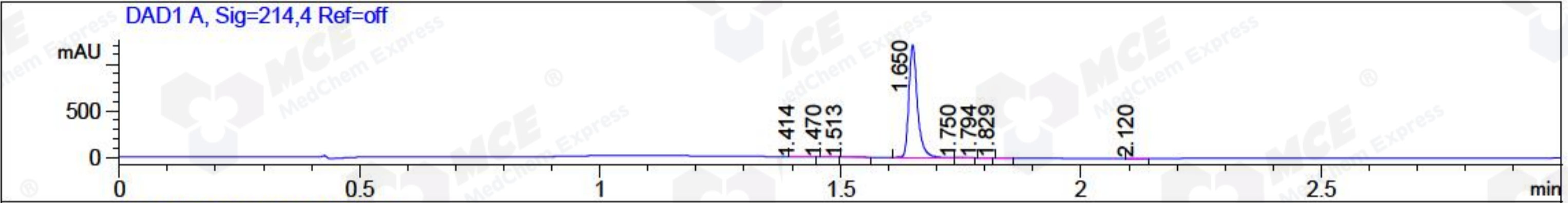


File ..Data\2018\20181015\20181015\SQS5963-023-2.D Tgt Mass (CHM):
 Injection Date : 15 Oct 18 9:25 am +0800 Seq. Line : 9
 Sample Name : SQS5963-023-2 Location : P1-A-07
 Acq. Operator : SYSTEM Inj : 1
 Spec. Reported : MS Integration Inj Volume : 1 ul
 Acq. Method : D:\LCMS03\Data\2018\20181015\20181015\1-POS-3MIN.M
 Analysis Method : D:\LCMS03\Data\2018\20181015\20181015\1-POS-3MIN.M
 Catalog No: HY-102007A Batch#33430
 Method Info : Mobile Phase: A: water(0.01%TFA) B:ACN(0.01%TFA)
 Gradient: 5% to 95%B within 1.3 min
 Flow Rate :1.8ml/min
 Column :SunFire C18, 4.6*50mm,3.5um A-RP-186
 Oven Temperature : 45C



Integration Results for DAD1 A, Sig=214,4 Ref=off

RetTim	Width	Area	Height	Area%	MS (+)
1.41	0.02	3.59	2.46	0.24	361
1.47	0.02	1.02	0.86	0.07	361
1.51	0.02	1.27	0.86	0.08	102
1.65	0.02	1489.40	1202.10	99.23	890
1.75	0.02	1.98	1.37	0.13	890
1.79	0.02	0.71	0.57	0.05	890
1.83	0.02	0.59	0.38	0.04	890
2.12	0.02	2.45	2.05	0.16	890

Integration Results for DAD1 B, Sig=254,4 Ref=off

RetTim	Width	Area	Height	Area%	MS (+)
1.41	0.02	0.27	0.18	0.04	361
1.52	0.02	0.34	0.37	0.05	102
1.54	0.01	0.11	0.11	0.02	102
1.65	0.02	696.56	565.88	99.16	890
1.72	0.02	0.86	0.57	0.12	890
1.78	0.02	0.73	0.00	0.10	890

1.83	0.02	0.73	0.62	0.10	890
2.12	0.02	2.81	2.21	0.40	890

Integration Results for ELS1 A, ELSD Signal

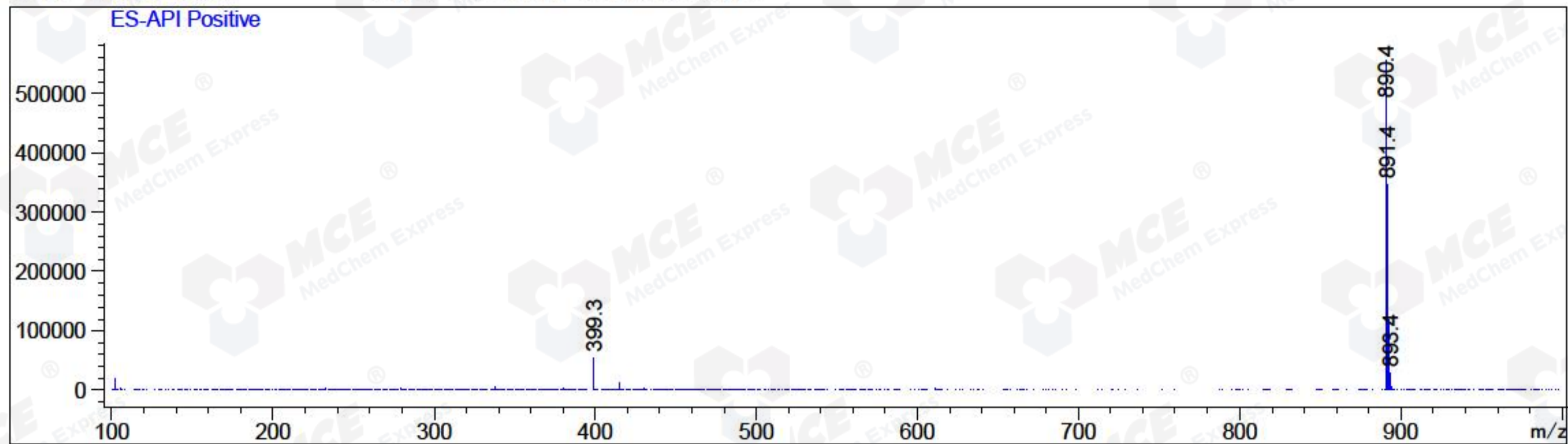
RetTim	Width	Area	Height	Area%	MS (+)
1.76	0.06	11.28	2.72	100.00	890

Integration Results for MSD1 TIC, MS File

RetTim	Width	Area	Height	Area%	MS (+)
1.69	0.07	18585892.00	4139224.25	100.00	890

Ret. Time: 1.69

<<<< POSITIVE SPECTRA >>>>



*** End of Report ***