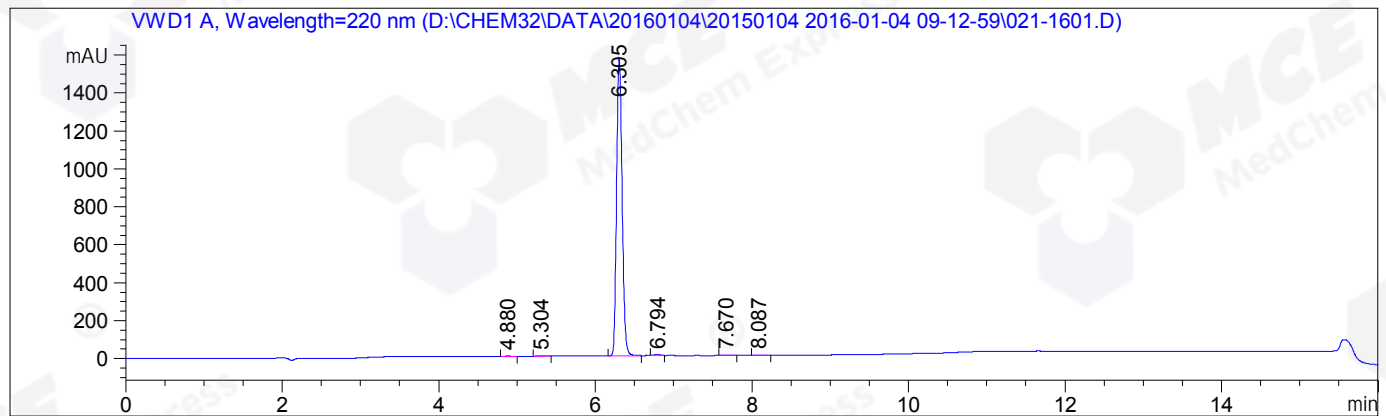


=====  
Acq. Operator : CYL(HPLC-09) Seq. Line : 16  
Acq. Instrument : Instrument 1 Location : Vial 21  
Injection Date : 1/4/2016 2:14:37 PM Inj : 1  
Inj Volume : 5.000 µl  
Acq. Method : D:\CHEM32\DATA\20160104\20150104 2016-01-04 09-12-59\10-80A,220NM.M  
Last changed : 1/4/2016 1:55:05 PM by CYL(HPLC-09)  
(modified after loading)  
Analysis Method : D:\CHEM32\METHODS\RP-HPLC\10-80A(210NM).M  
Last changed : 1/4/2016 2:33:36 PM by CYL(HPLC-09)  
(modified after loading)  
Catalog No : HY-10215 Batch#19140  
A-RP-93

Additional Info : Peak(s) manually integrated



=====  
Area Percent Report  
=====

Sorted By : Signal  
Multiplier: : 1.0000  
Dilution: : 1.0000  
Use Multiplier & Dilution Factor with ISTDs

Signal 1: VWD1 A, Wavelength=220 nm

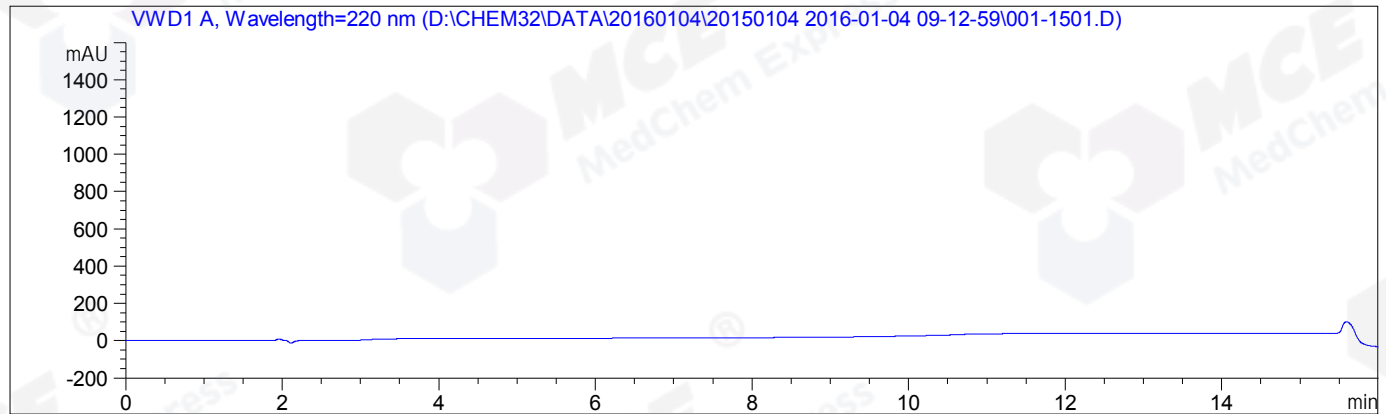
Peak #	RetTime [min]	Type	Width [min]	Area [mAU*s]	Height [mAU]	Area %
1	4.880	BB	0.0776	7.47347	1.46339	0.0959
2	5.304	BB	0.0780	15.42698	3.05034	0.1979
3	6.305	BB	0.0777	7728.10498	1562.36487	99.1420
4	6.794	MF	0.0738	27.34339	6.17807	0.3508
5	7.670	BB	0.0733	10.18533	2.22980	0.1307
6	8.087	BB	0.0882	6.45375	1.15539	0.0828

Totals : 7794.98791 1576.44186

=====  
\*\*\* End of Report \*\*\*

=====  
Acq. Operator : CYL(HPLC-09) Seq. Line : 15  
Acq. Instrument : Instrument 1 Location : Vial 1  
Injection Date : 1/4/2016 1:56:19 PM Inj : 1  
Inj Volume : 5.000 µl  
Acq. Method : D:\CHEM32\DATA\20160104\20150104 2016-01-04 09-12-59\10-80A,220NM.M  
Last changed : 1/4/2016 1:55:05 PM by CYL(HPLC-09)  
(modified after loading)  
Analysis Method : D:\CHEM32\METHODS\RP-HPLC\10-80A(210NM).M  
Last changed : 1/4/2016 2:33:54 PM by CYL(HPLC-09)  
(modified after loading)  
Catalog No : HY-10215 Batch#19140  
A-RP-93

Additional Info : Peak(s) manually integrated



=====  
Area Percent Report  
=====

Sorted By : Signal  
Multiplier: : 1.0000  
Dilution: : 1.0000  
Use Multiplier & Dilution Factor with ISTDs

No peaks found

=====  
\*\*\* End of Report \*\*\*