

File ..1\DATA\2018\20181227\543\BIZ2018-D26-CXL7.D Tgt Mass (CHM):

Injection Date : 27 Dec 18 10:59 am +0800 Seq. Line : 23

Sample Name : BIZ2018-D26-CXL7 Location : P2-B-02

Acq. Operator : LQ_1052 Inj : 1

Spec. Reported : MS Integration Inj Volume : 2 ul

Acq. Method : D:\Chem32\1\data\2018\20181227\543\1-POS-3MIN-1.M

Analysis Method : D:\CHEM32\1\DATA\2018\20181227\543\1-POS-3MIN-1.M

Catalog No : HY-103186 Batch#36115

Method Info : Mobile Phase: A: water(0.01%TFA) B:ACN(0.01%TFA)

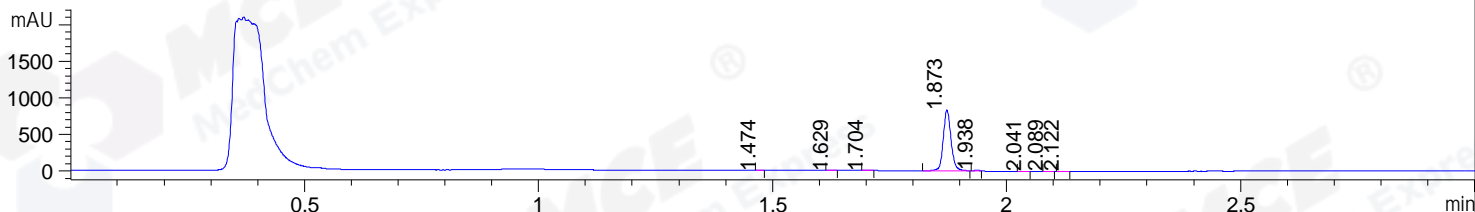
Gradient: 5% to 95%B within 1.3 min

Flow Rate :1.8ml/min

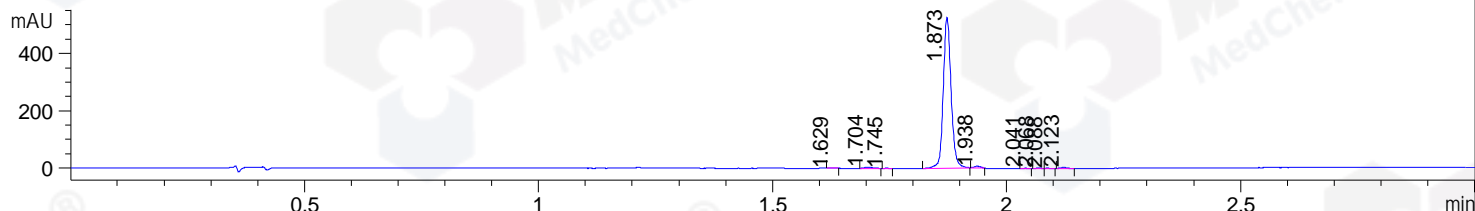
Column :SunFire C18, 4.6*50mm,3.5um A-RP-314

Oven Temperature : 45

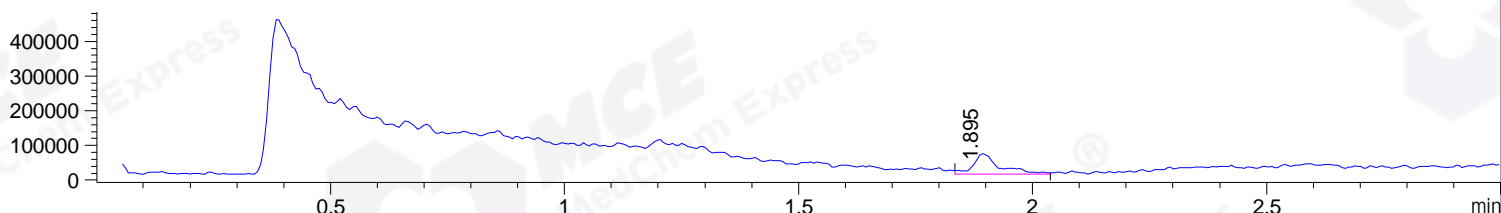
DAD1 B, Sig=214,4 Ref=off



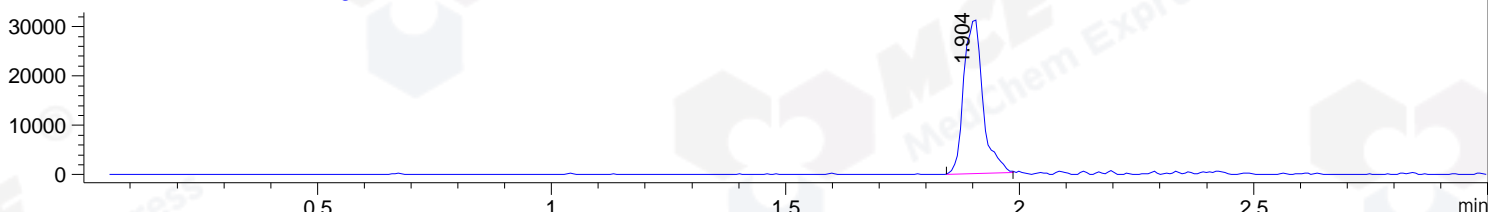
DAD1 C, Sig=254,4 Ref=off



MSD1 TIC, MS File ES-API, Pos, Scan, Frag: 70



Ion 504.2, MSD1 504.2, Target Mass 503.2 +H Positive, EIC=503.9:504.9



Integration Results for DAD1 B, Sig=214,4 Ref=off

RetTim	Width	Area	Height	Area%	MS (+)
1.47	0.01	0.97	1.58	0.10	157
1.63	0.01	1.58	2.09	0.16	157
1.70	0.01	3.91	4.61	0.40	157
1.87	0.02	960.78	828.50	98.06	504
1.94	0.01	4.83	6.31	0.49	157
2.04	0.01	1.77	2.00	0.18	157
2.09	0.01	1.35	1.54	0.14	157
2.12	0.02	4.58	4.82	0.47	157

Integration Results for DAD1 C, Sig=254,4 Ref=off

RetTim	Width	Area	Height	Area%	MS (+)
1.63	0.01	1.07	1.23	0.17	157
1.70	0.02	4.97	4.29	0.79	157
1.74	0.02	0.38	0.42	0.06	157
1.87	0.02	610.33	526.83	96.88	504
1.94	0.02	5.47	5.84	0.87	504
2.04	0.01	1.22	1.43	0.19	157

2.07	0.02	1.41	1.52	0.22	157
2.09	0.01	0.91	1.08	0.14	157
2.12	0.02	4.20	3.86	0.67	157

Integration Results for MSD1 TIC, MS File

RetTim	Width	Area	Height	Area%	MS (+)
1.89	0.06	230657.05	57935.85	100.00	504

Ret. Time: 1.89

<<<< POSITIVE SPECTRA >>>>

ES-API Positive

