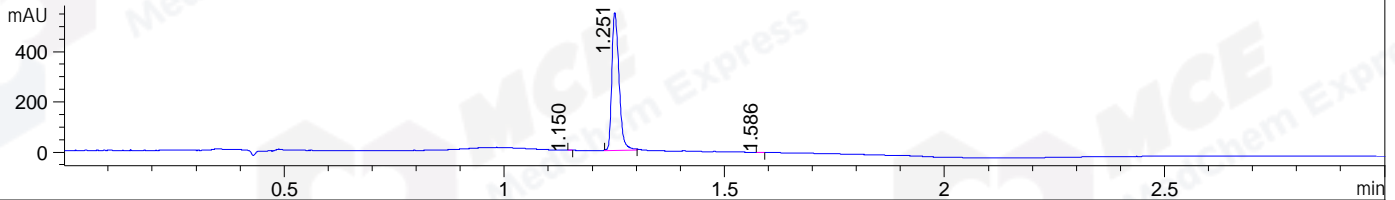
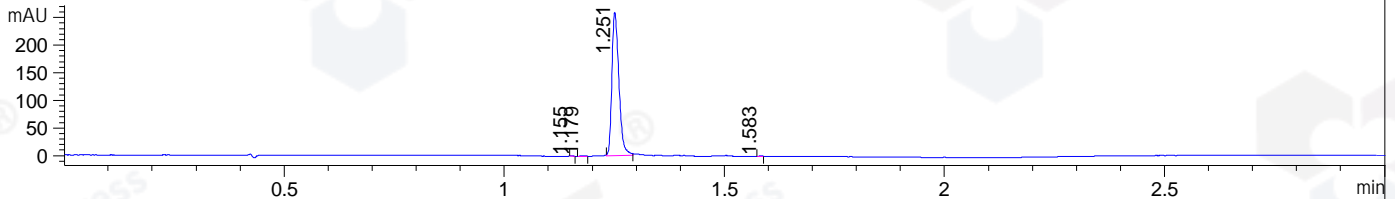


File ..\DATA\2019\20190220\555\BIZ2019-215-WYQ22.D Tgt Mass (CHM):
Injection Date : 20 Feb 19 2:46 pm +0800 Seq. Line : 28
Sample Name : BIZ2019-215-WYQ22 Location : P2-F-03
Acq. Operator : LQ_1052 Inj : 1
Spec. Reported : MS Integration Inj Volume : 1 ul
Acq. Method : D:\Chem32\1\data\2019\20190220\555\1-POS-3MIN-1.M
Analysis Method : D:\CHEM32\1\DATA\2019\20190220\555\1-POS-3MIN-1.M
Catalog No : HY-10431 Batch#37571
Method Info : Mobile Phase: A: water(0.01%TFA) B:ACN(0.01%TFA)
Gradient: 5% to 95%B within 1.3 min
Flow Rate :1.8ml/min
Column :SunFire C18, 4.6*50mm,3.5um A-RP-314
Oven Temperature : 45

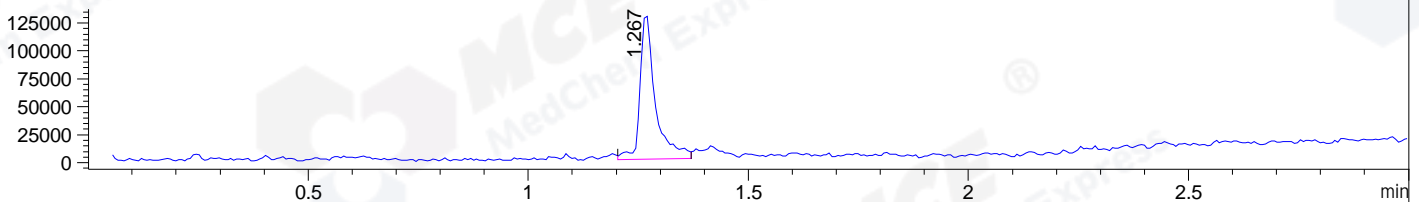
DAD1 B, Sig=214,4 Ref=off



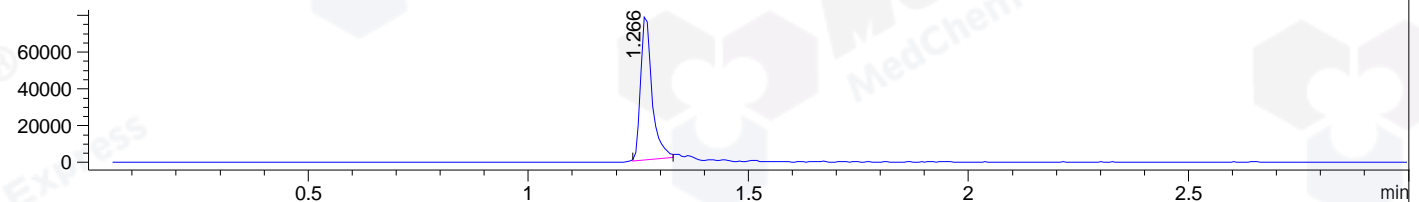
DAD1 C, Sig=254,4 Ref=off



MSD1 TIC, MS File ES-API, Pos, Scan, Frag: 70



Ion 385.1, MSD1 385.1, Target Mass 384.1 +H Positive, EIC=384.8:385.8



Integration Results for DAD1 B, Sig=214,4 Ref=off

RetTim	Width	Area	Height	Area%	MS (+)
1.15	0.01	0.19	0.57	0.03	ND
1.25	0.02	625.41	549.09	99.89	385
1.59	0.01	0.47	0.77	0.08	ND

Integration Results for DAD1 C, Sig=254,4 Ref=off

RetTim	Width	Area	Height	Area%	MS (+)
1.15	0.01	0.11	0.27	0.04	ND
1.18	0.01	0.44	0.59	0.15	ND
1.25	0.02	286.31	259.25	99.74	385
1.58	0.01	0.19	0.38	0.07	ND

Integration Results for MSD1 TIC, MS File

RetTim	Width	Area	Height	Area%	MS (+)
1.27	0.04	314191.81	131019.58	100.00	385

Ret. Time: 1.27

<<<< POSITIVE SPECTRA >>>>

ES-API Positive

