

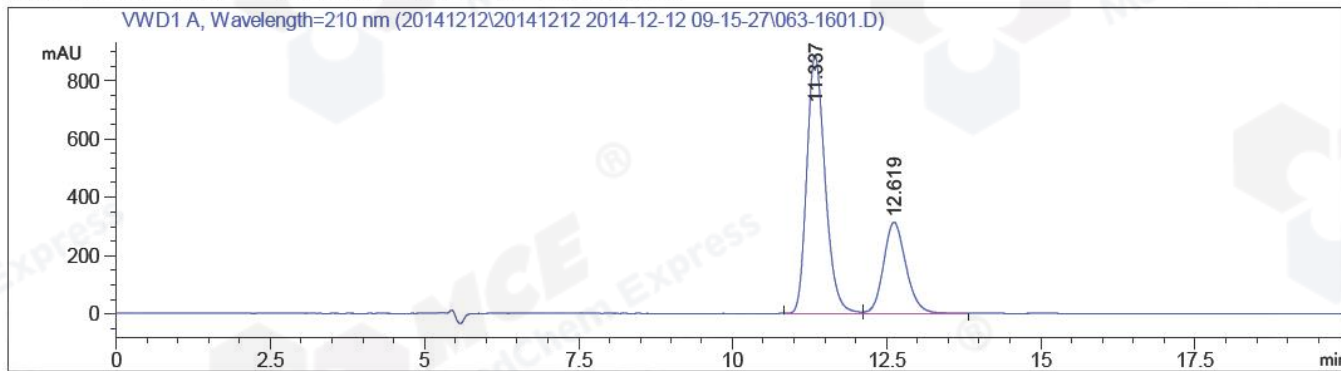
Sample Name: BIZ2014-D08-DJL17_RS

```

=====
Acq. Operator   : GYS (HPLC-04)                Seq. Line :   16
Acq. Instrument : Instrument 1                  Location  : Vial 63
Injection Date  : 12/12/2014 2:24:23 PM       Inj       :    1
                                                Inj Volume: 5.0 µl

Acq. Method     : D:\CHEM32\1\DATA\20141212\20141212 2014-12-12 09-15-27\AD,40B-ETOH,
                : 210NM.M
Last changed    : 12/12/2014 1:27:36 PM by GYS (HPLC-04)
                : (modified after loading)
Analysis Method : E:\AGILENT\METHODS\AD,40B-ETOH,210NM.M
Last changed    : 12/12/2014 5:23:50 PM by GYS (HPLC-04)
                : (modified after loading)
Catalog No     : HY-10502 Batch#14189
                : C-NP-18
    
```

Additional Info : Peak(s) manually integrated



Area Percent Report

```

Sorted By      :      Signal
Multiplier:    :      1.0000
Dilution:      :      1.0000
Use Multiplier & Dilution Factor with ISTDs
    
```

Signal 1: VWD1 A, Wavelength=210 nm

Peak #	RetTime [min]	Type	Width [min]	Area mAU *s	Height [mAU]	Area %
1	11.337	BV	0.3228	1.84387e4	886.11261	69.8124
2	12.619	VV	0.3899	7973.07422	313.48889	30.1876
Totals :				2.64117e4	1199.60150	

*** End of Report ***

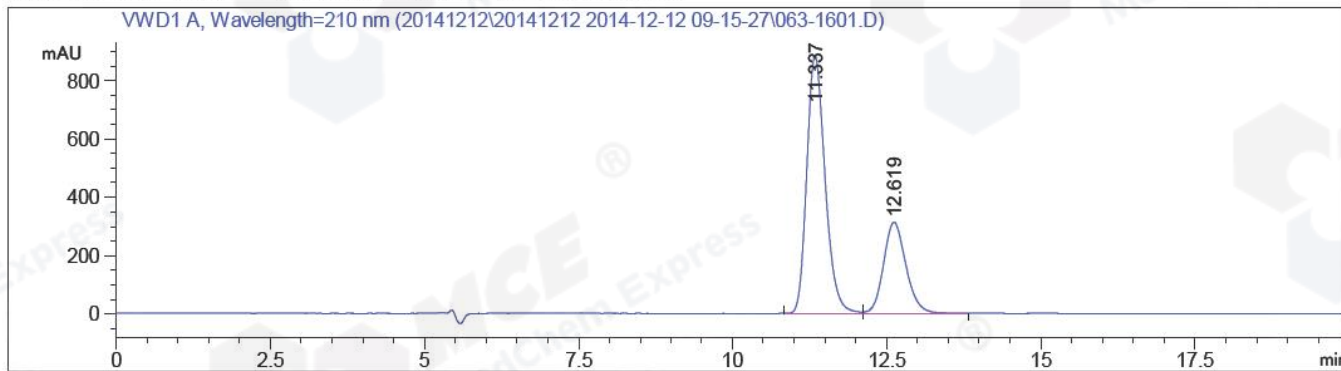
Sample Name: BIZ2014-D08-DJL17_RS

```

=====
Acq. Operator   : GYS (HPLC-04)                Seq. Line :   16
Acq. Instrument : Instrument 1                  Location  : Vial 63
Injection Date  : 12/12/2014 2:24:23 PM      Inj       :    1
                                                Inj Volume: 5.0 µl

Acq. Method     : D:\CHEM32\1\DATA\20141212\20141212 2014-12-12 09-15-27\AD,40B-ETOH,
                210NM.M
Last changed    : 12/12/2014 1:27:36 PM by GYS (HPLC-04)
                (modified after loading)
Analysis Method : E:\AGILENT\METHODS\AD,40B-ETOH,210NM.M
Last changed    : 12/12/2014 5:26:24 PM by GYS (HPLC-04)
                (modified after loading)
Catalog No     : HY-10502 Batch#14189
                C-NP-18
    
```

Additional Info : Peak(s) manually integrated



Area Percent Report with Performance

```

=====
Multiplier:           : 1.0000
Dilution:             : 1.0000
Use Multiplier & Dilution Factor with ISTDs
    
```

Signal 1: VWD1 A, Wavelength=210 nm

RetTime [min]	k'	Area mAU *s	Height [mAU]	Symm.	Width [min]	Plates	Resol	Select
							ution	ivity
11.337	-	1.84387e4	886.11261	0.76	0.3175	7066	-	-
12.619	-	7973.07422	313.48889	0.82	0.3872	5883	2.14	1.11

*** End of Report ***

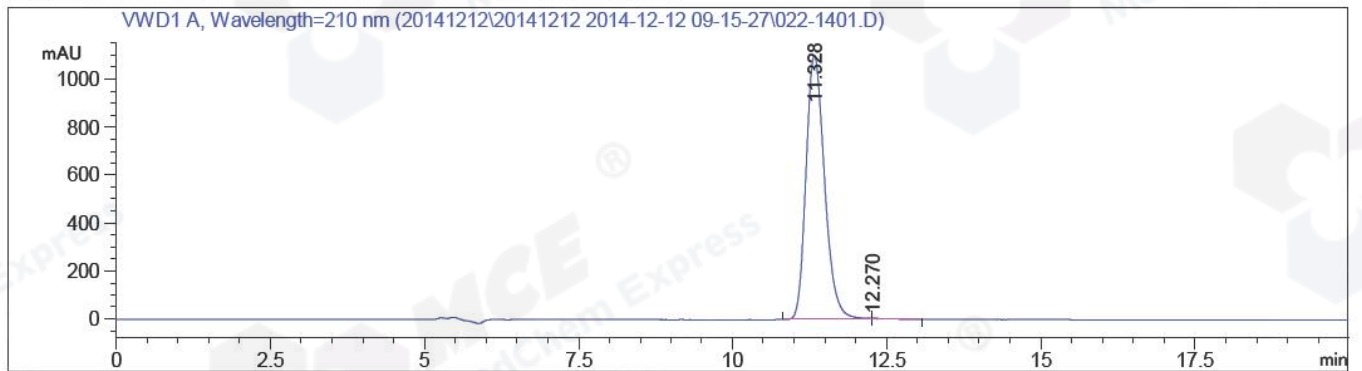
Sample Name: BIZ2014-D08-DJL17

```

=====
Acq. Operator   : GYS (HPLC-04)                Seq. Line :   14
Acq. Instrument : Instrument 1                  Location  : Vial 22
Injection Date  : 12/12/2014 1:40:58 PM       Inj       :    1
                                                Inj Volume: 5.0 µl

Acq. Method     : D:\CHEM32\1\DATA\20141212\20141212 2014-12-12 09-15-27\AD,40B-ETOH,
                : 210NM.M
Last changed    : 12/12/2014 1:27:36 PM by GYS (HPLC-04)
                : (modified after loading)
Analysis Method : E:\AGILENT\METHODS\AD,40B-ETOH,210NM.M
Last changed    : 12/12/2014 5:23:50 PM by GYS (HPLC-04)
                : (modified after loading)
Catalog No      : HY-10502 Batch#14189
                : C-NP-18
    
```

Additional Info : Peak(s) manually integrated



Area Percent Report

```

Sorted By      :      Signal
Multiplier:    :      1.0000
Dilution:      :      1.0000
Use Multiplier & Dilution Factor with ISTDs
    
```

Signal 1: VWD1 A, Wavelength=210 nm

Peak #	RetTime [min]	Type	Width [min]	Area mAU *s	Height [mAU]	Area %
1	11.328	MF R	0.1787	2.32622e4	1101.24438	99.5880
2	12.270	FM R	0.3588	96.24614	4.47062	0.4120
Totals :				2.33584e4	1105.71501	

*** End of Report ***