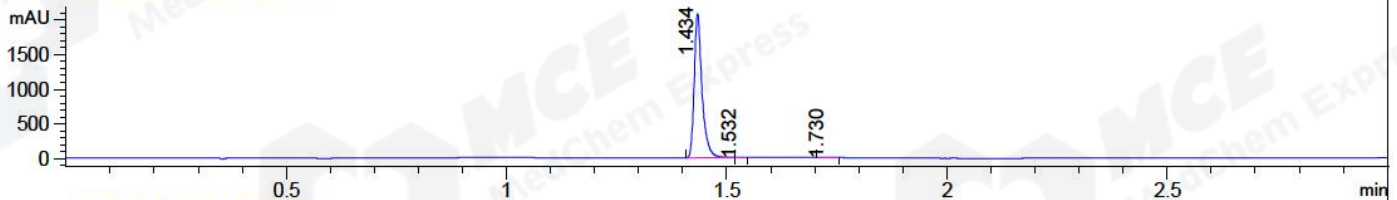
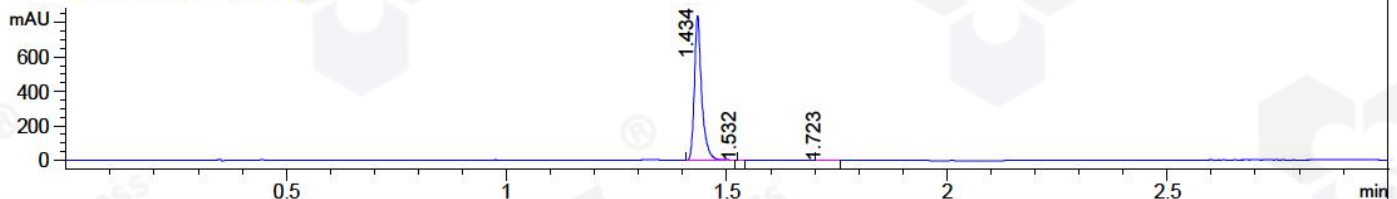


File ..1\DATA\2018\20180823\356\BIZ2018-823-CXL1.D Tgt Mass (CHM):
Injection Date : 23 Aug 18 5:51 pm +0800 Seq. Line : 8
Sample Name : BIZ2018-823-CXL1 Location : P2-D-03
Acq. Operator : LQ_1052 Inj : 1
Spec. Reported : MS Integration Inj Volume : 1 ul
Acq. Method : D:\Chem32\1\data\2018\20180823\356\1-POS-3MIN-1.M
Analysis Method : D:\CHEM32\1\DATA\2018\20180823\356\1-POS-3MIN-1.M
Catalog No : HY-107723 Batch#32498 A-RP-314
Method Info : Mobile Phase: A: water(0.01%TFA) B:ACN(0.01%TFA)
Gradient: 5% to 95%B within 1.3 min
Flow Rate :1.8ml/min
Column :SunFire C18, 4.6*50mm,3.5um A-RP-314
Oven Temperature : 45□

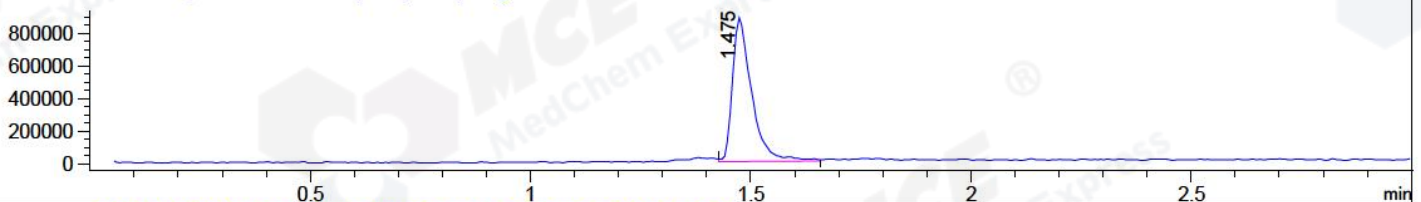
DAD1 B, Sig=214,4 Ref=off



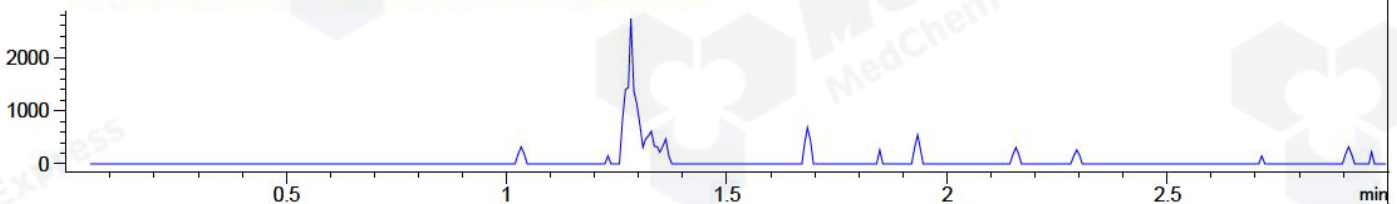
DAD1 C, Sig=254,4 Ref=off



MSD1 TIC, MS File ES-API, Pos, Scan, Frag: 70



Ion 512.2, MSD1 512.2, Target Mass 511.2 +H Positive, EIC=511.9:512.9



Integration Results for DAD1 B, Sig=214,4 Ref=off

RetTim	Width	Area	Height	Area%	MS (+)
1.43	0.02	2546.65	2080.61	99.63	476
1.53	0.01	1.49	1.91	0.06	476
1.73	0.03	7.85	4.89	0.31	476

Integration Results for DAD1 C, Sig=254,4 Ref=off

RetTim	Width	Area	Height	Area%	MS (+)
1.43	0.02	966.39	842.65	99.71	476
1.53	0.01	0.23	0.43	0.02	476
1.72	0.03	2.59	1.42	0.27	476

Integration Results for MSD1 TIC, MS File

RetTim	Width	Area	Height	Area%	MS (+)
1.47	0.05	2689865.75	885405.69	100.00	476

Ret. Time: 1.47

<<<< POSITIVE SPECTRA >>>>

ES-API Positive

