

File ..DATA\2020\20200325\894\BIZ2020-324-CXL10.D Tgt Mass (CHM):

Injection Date : 25 Mar 20 6:55 pm +0800 Seq. Line : 118

Sample Name : BIZ2020-324-CXL10 Location : P1-B-08

Acq. Operator : ZJ_1432 Inj : 1

Spec. Reported : MS Integration Inj Volume : 2 ul

Acq. Method : D:\Chem32\1\data\2020\20200325\894\1-POS-3MIN.M

Analysis Method : D:\CHEM32\1\DATA\2020\20200325\894\1-POS-3MIN.M

Catalog No : HY-107779 Batch#61840

Method Info : Mobile Phase: A: water(0.01%TFA) B:ACN(0.01%TFA)

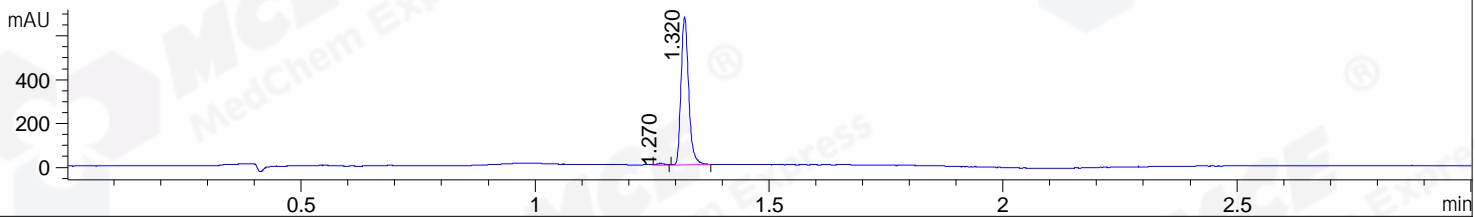
Gradient: 5% to 95%B within 1.3 min

Flow Rate :1.8ml/min

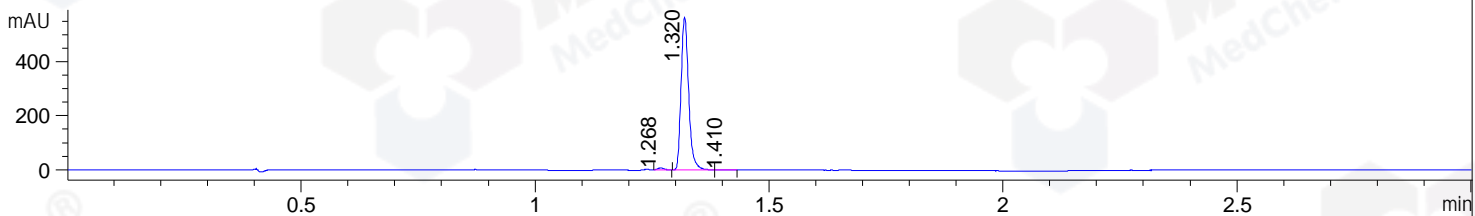
Column :SunFire C18, 4.6*50mm,3.5um A-RP-433

Oven Temperature : 45

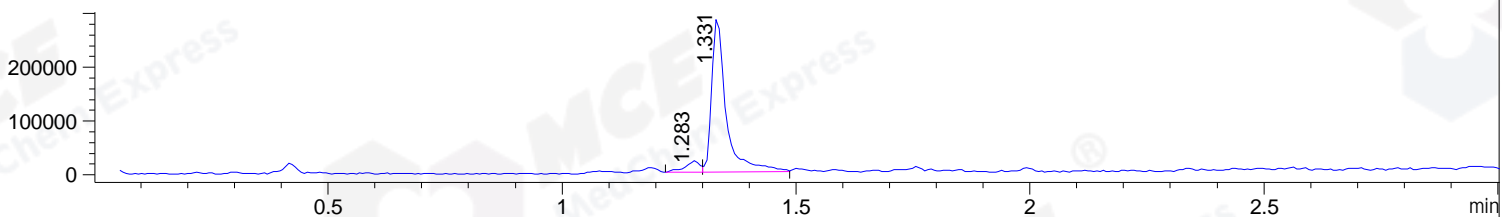
DAD1 B, Sig=214,4 Ref=off



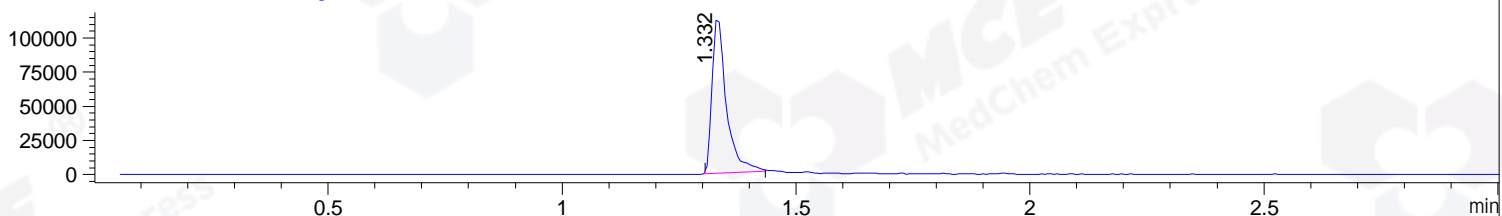
DAD1 C, Sig=254,4 Ref=off



MSD1 TIC, MS File ES-API, Pos, Scan, Frag: 70



Ion 570, MSD1 570, Target Mass 569 +H Positive, EIC=569.7:570.7



Integration Results for DAD1 B, Sig=214,4 Ref=off

RetTim	Width	Area	Height	Area%	MS (+)
1.27	0.02	6.46	6.15	0.84	464
1.32	0.02	759.14	676.07	99.16	570

Integration Results for DAD1 C, Sig=254,4 Ref=off

RetTim	Width	Area	Height	Area%	MS (+)
1.27	0.02	6.49	6.73	1.01	464
1.32	0.02	631.93	565.52	98.67	570
1.41	0.03	2.00	1.11	0.31	570

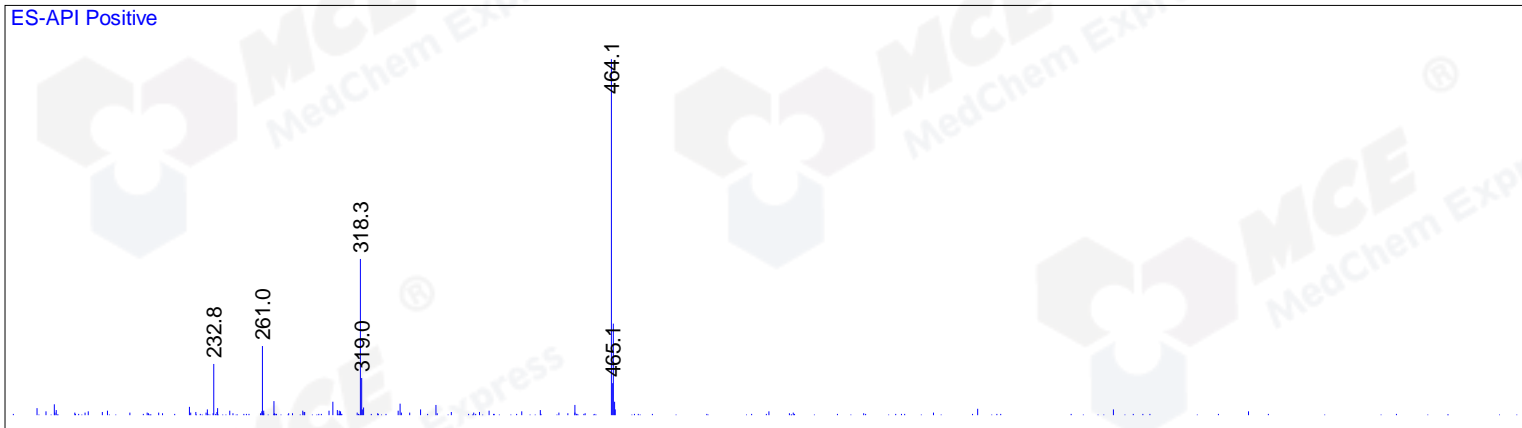
Integration Results for MSD1 TIC, MS File

RetTim	Width	Area	Height	Area%	MS (+)
1.28	0.03	45720.45	21303.31	6.93	464
1.33	0.03	613880.56	288871.75	93.07	570

Ret. Time: 1.28

<<<< POSITIVE SPECTRA >>>>

ES-API Positive



Ret. Time: 1.33

ES-API Positive

